



Santa Fe Trail Ranch

Climatological Data
for

2012

The climatological data in this document represents a compilation of the Weather Stats pages from the original Santa Fe Trail Ranch web site and continuing data collection since moving to the new SFTR web site.

Until April 2012, longtime resident Walt Wolff collected and posted daily weather data. But the wintery weather and work associated with maintaining the beautiful Loma Lobo property caused Joyce and Walt to switch to part-time status. Walt gave Robert L. Scott the weather equipment and Bob posted the weather updates until his equipment failed in January 2018. Since then, the data has come from the StargateCOlorado weather station (same type of equipment that Walt/Bob used) maintained by Ernie Parker / Sharon Sorenson.

The data is broken into two sections: the charts in the first section are a synopsis of the weather on the Ranch. For more detailed data (and an aid to help you sleep!), see the monthly climatological tables in the second section.

Notes:

- The StargateCOlorado weather station is at the south end of the Ranch and at a higher elevation than the station maintained by Walt Wolff & Bob Scott. As a result, you will find that, on average, the temperature readings will be slightly lower, and the precipitation readings will be slightly higher than those reported by Bob/Walt's stations.
- The data shown on the various pages starts at a high level and gets more detailed the further down you go.
 - The highest-level charts show the precipitation, snow, temperature, and winds for the entire year.
 - The middle-level charts show the temperature and winds for each month of the year.
 - The lowest-level tables provide all the data collected by the weather station.
 - The snow data has only been collected since 2015 by Ernie / Sharon and does not come from the weather station.
 - What's the definition of "Mean Temperature"? Unlike most weather information, where the "Average Temperature" is just the average of the highest and lowest temperatures of the day, the weather station captures the temperature every 15 minutes, collecting 96 readings per day. The "Mean Temperature" is the average of all 96 readings, giving you a more accurate value.
- Prior to 2022, the times shown in the climatological tables are based on a 12-hour (AM/PM) clock. Starting in 2022, the times listed are based on a 24-hour clock. The data collection program suddenly switched modes.

Enjoy!!

--Ernie Parker

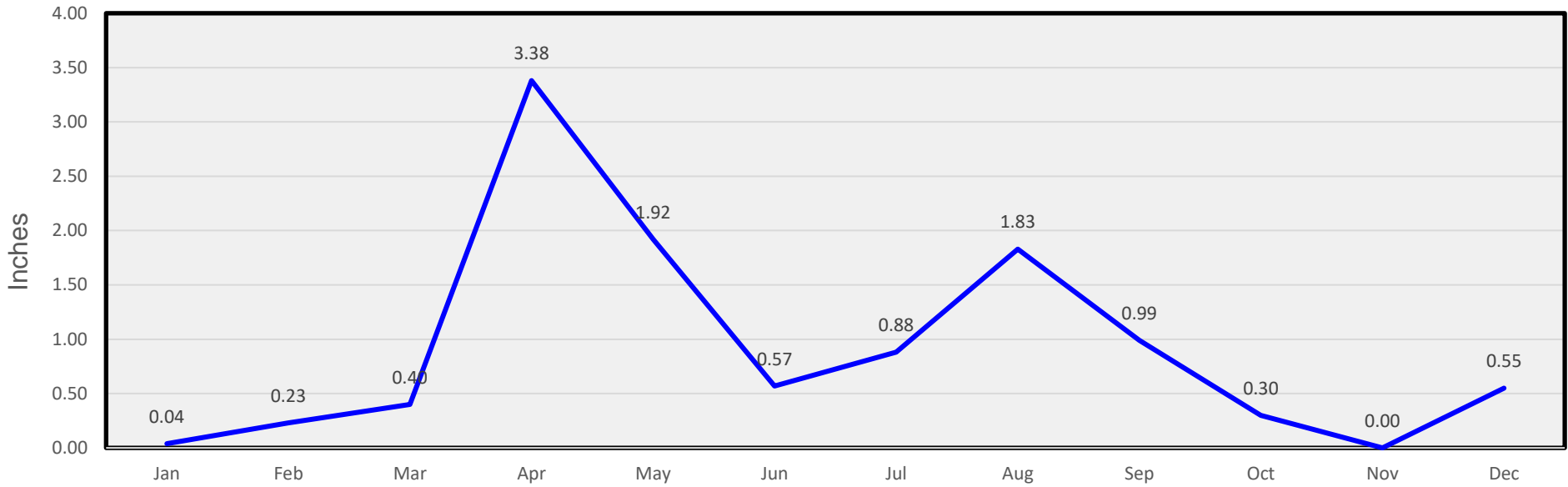
Contents

Charts	5
Monthly Precipitation.....	6
Monthly Snow	6
Monthly Temperatures	7
Monthly Winds	7
January Temperatures.....	8
January Winds	8
February Temperatures	9
February Winds.....	9
March Temperatures.....	10
March Winds	10
April Temperatures	11
April Winds.....	11
May Temperatures.....	12
May Winds	12
June Temperatures.....	13
June Winds	13
July Temperatures	14
July Winds.....	14
August Temperatures	15
August Winds.....	15
September Temperatures.....	16
September Winds	16
October Temperatures.....	17
October Winds	17
November Temperatures.....	18
November Winds	18
December Temperatures.....	19
December Winds	19

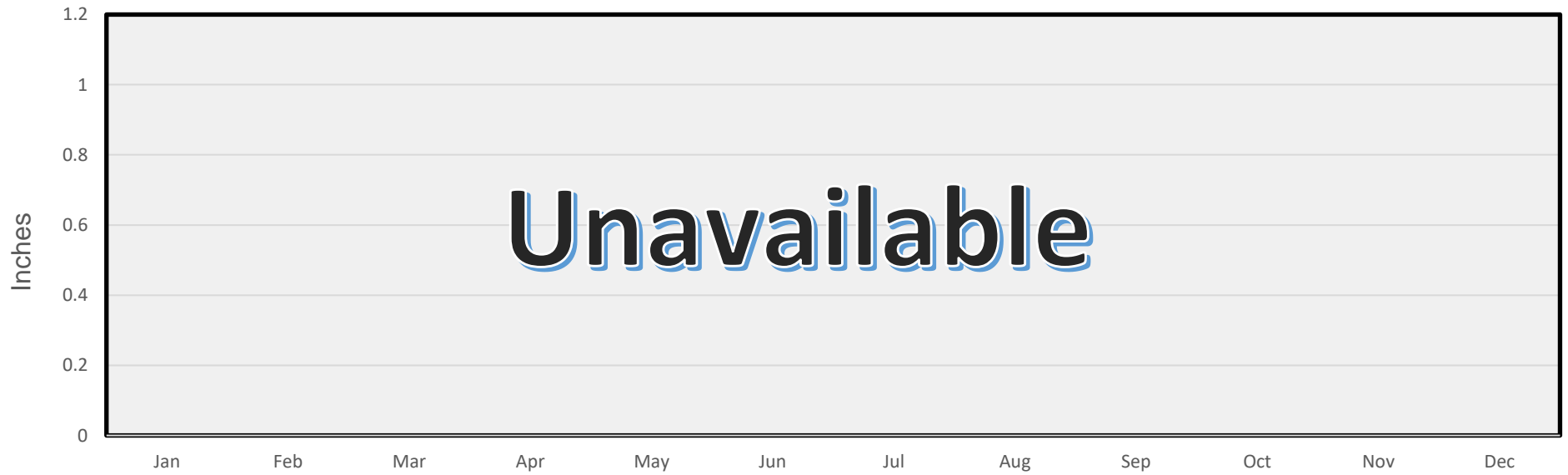
Tables	20
January	21
February	22
March	23
April	24
May	25
June	26
July	27
August	28
September	29
October	30
November	31
December	32

Charts

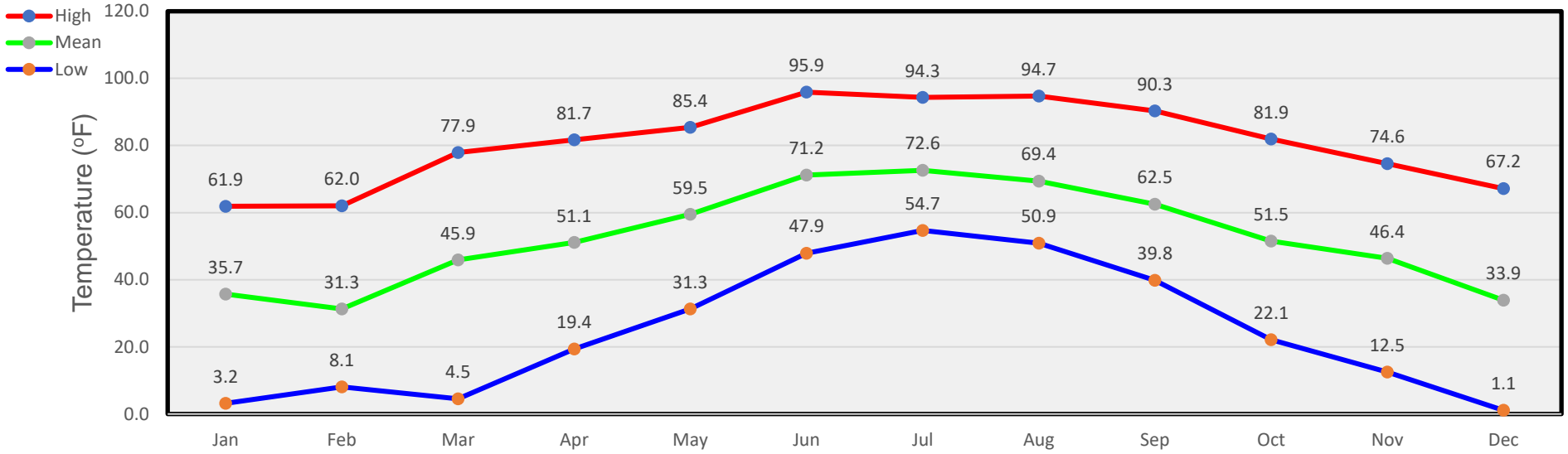
Monthly Precipitation



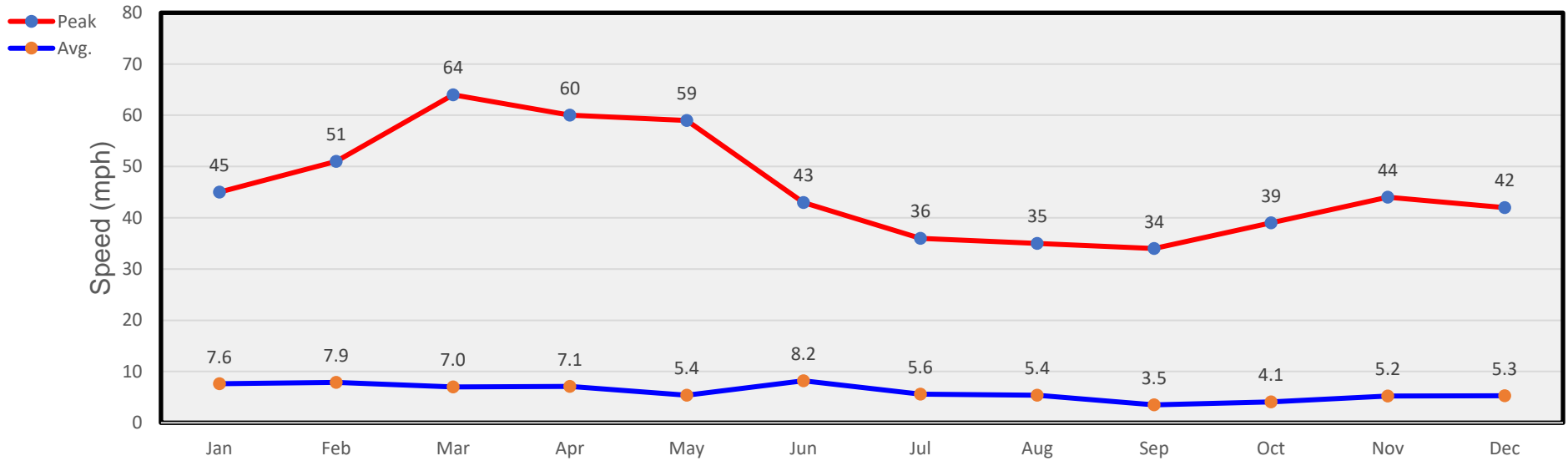
Monthly Snow



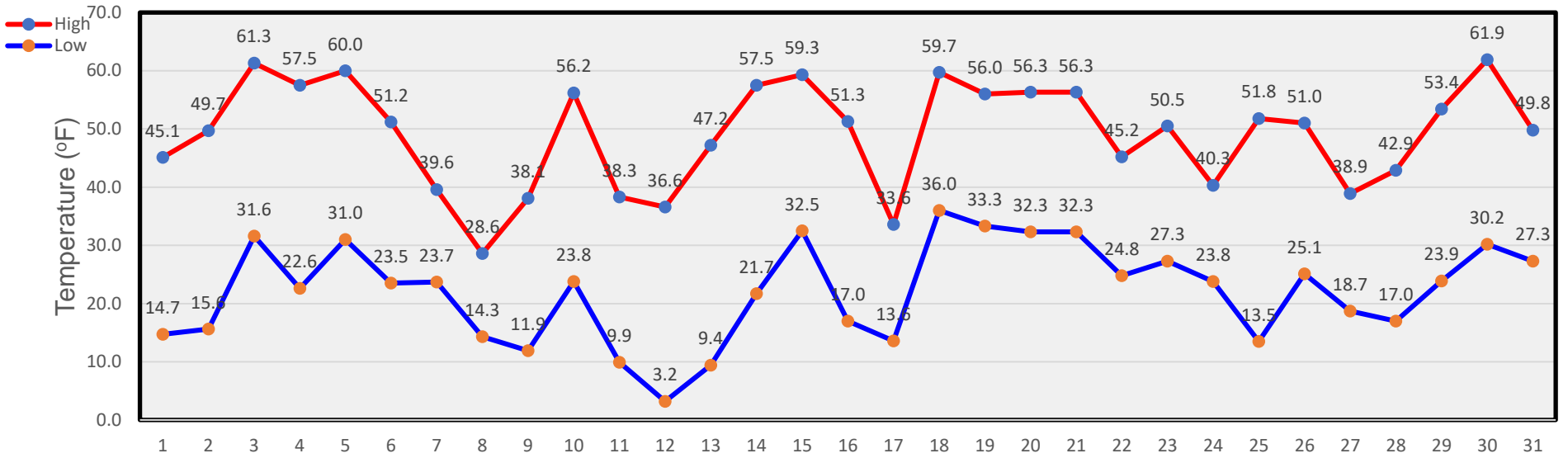
Monthly Temperatures



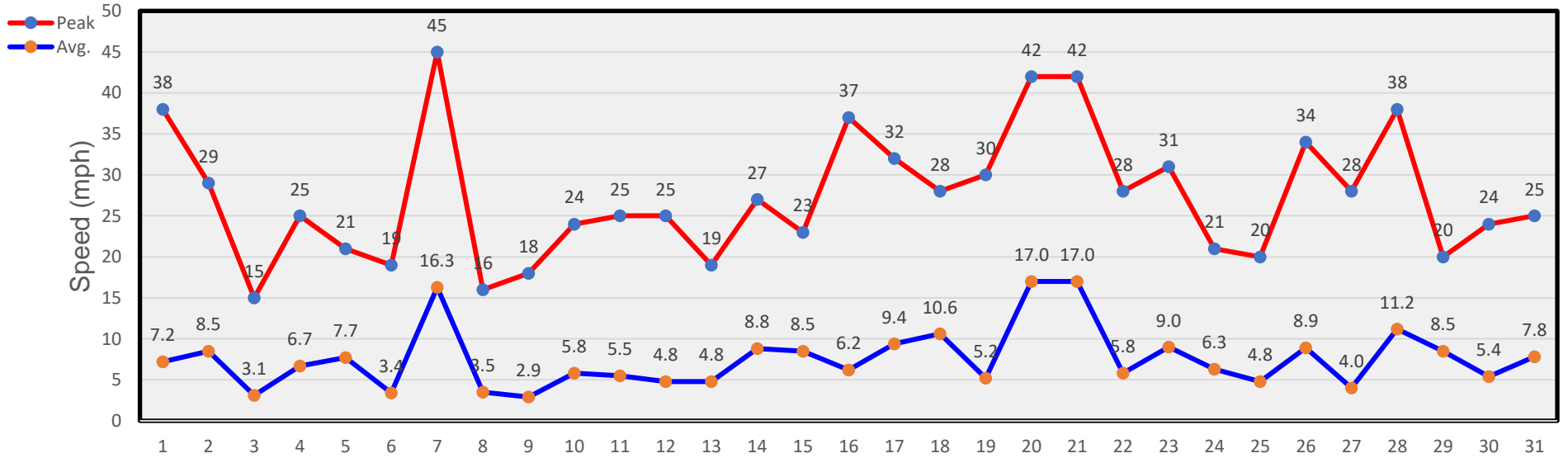
Monthly Winds



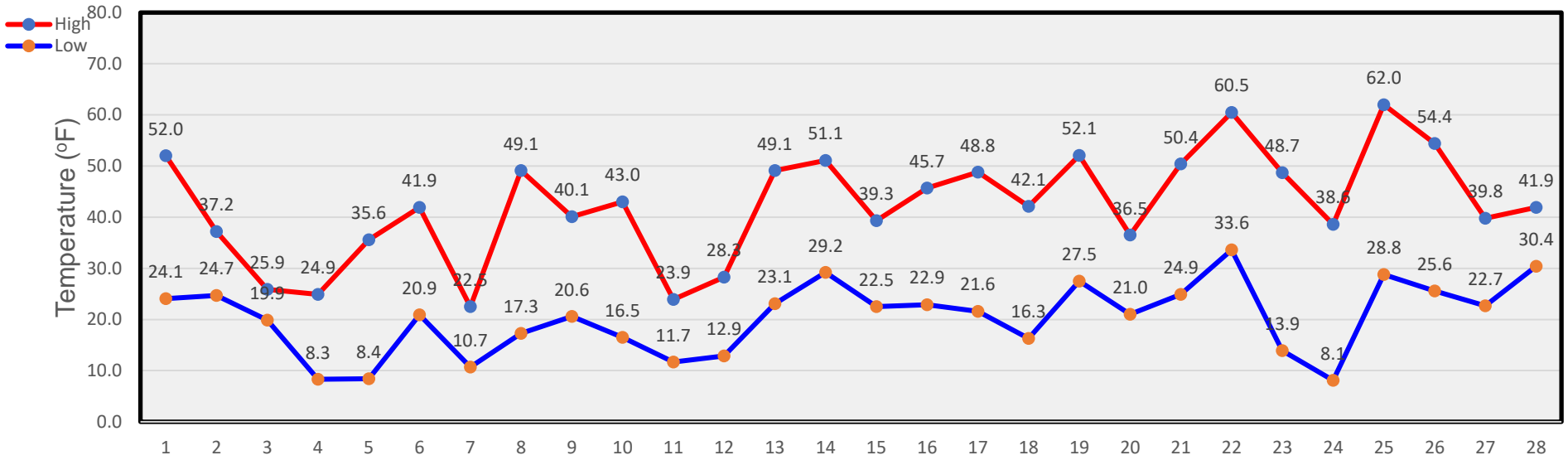
January Temperatures



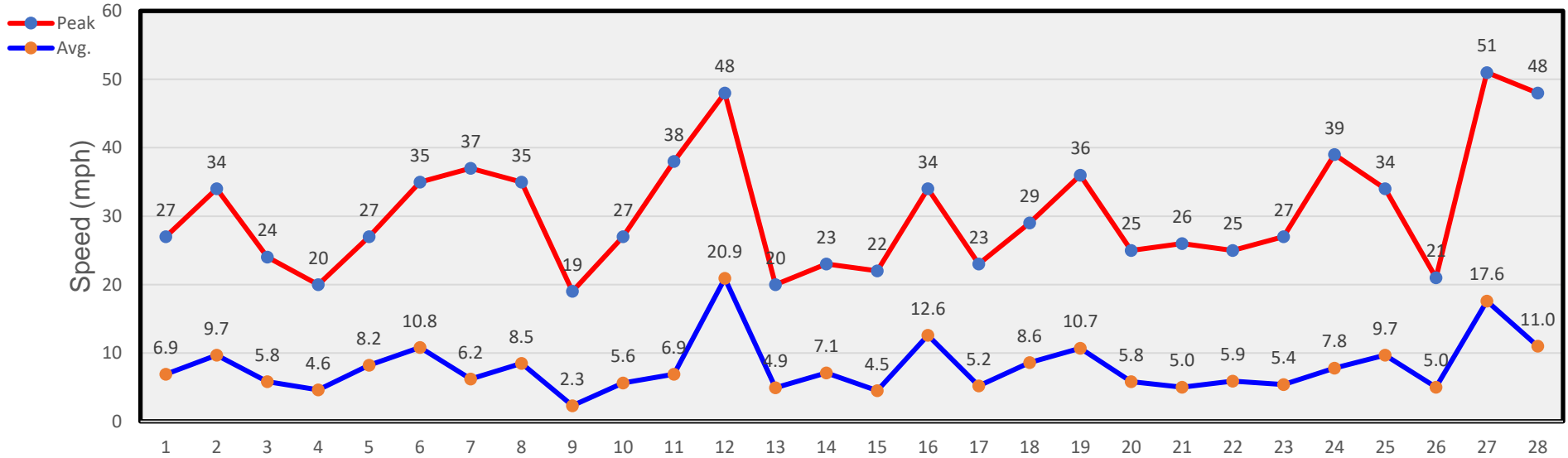
January Winds



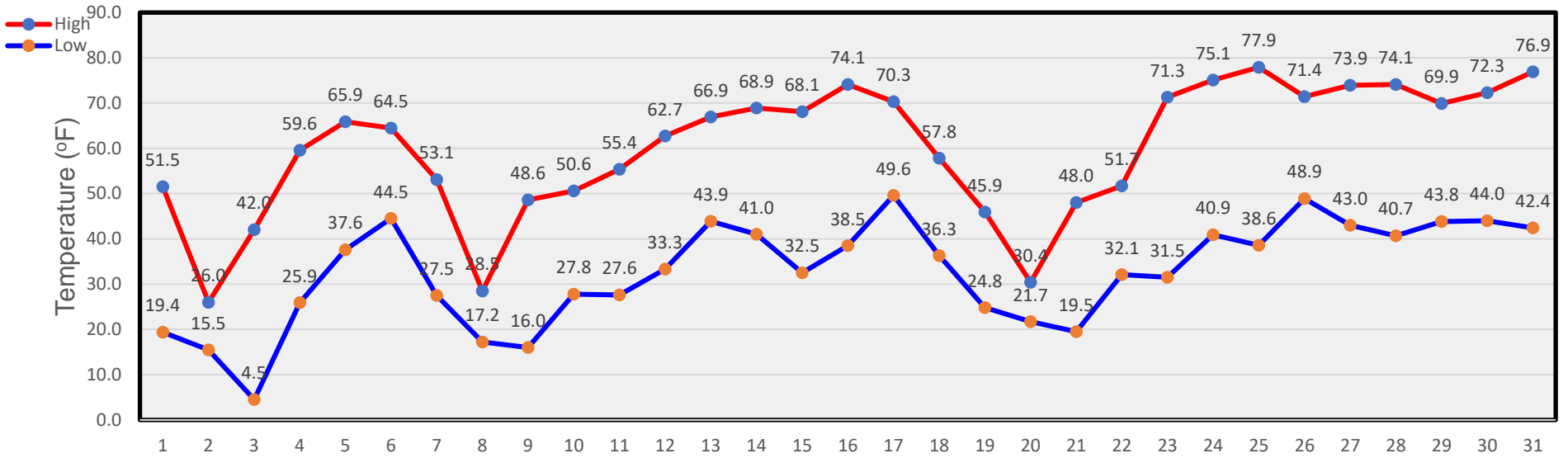
February Temperatures



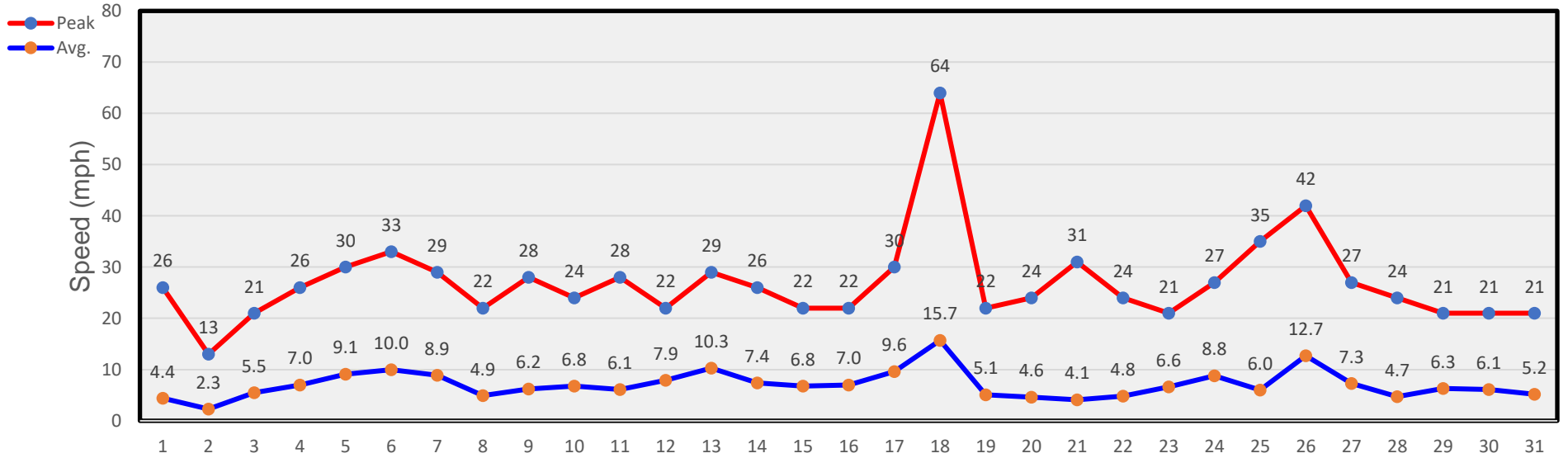
February Winds



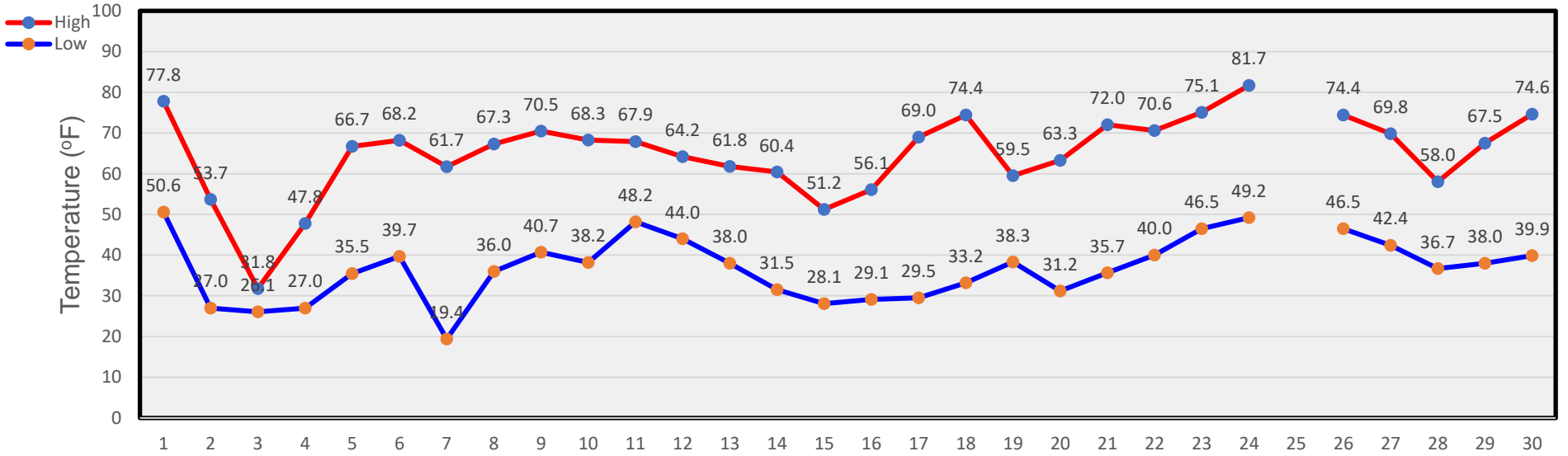
March Temperatures



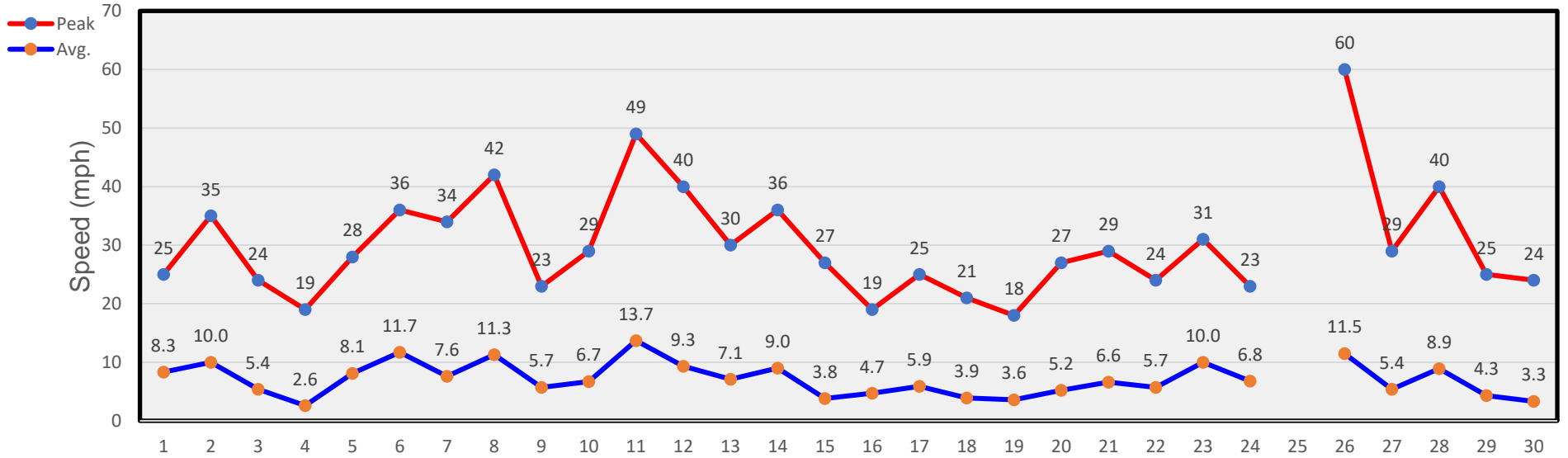
March Winds



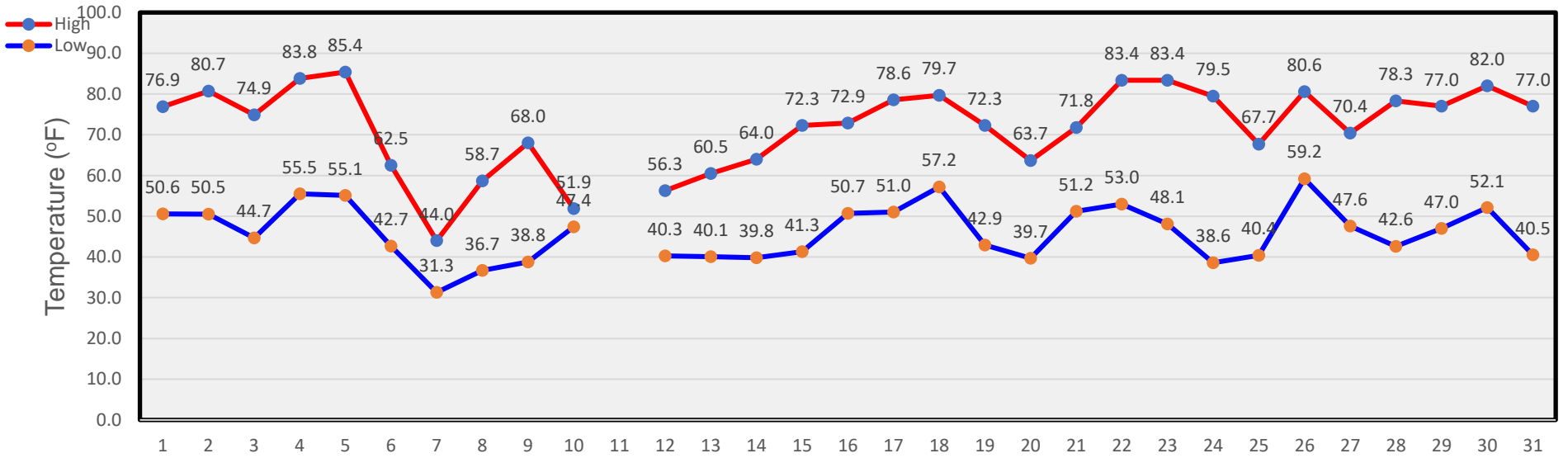
April Temperatures



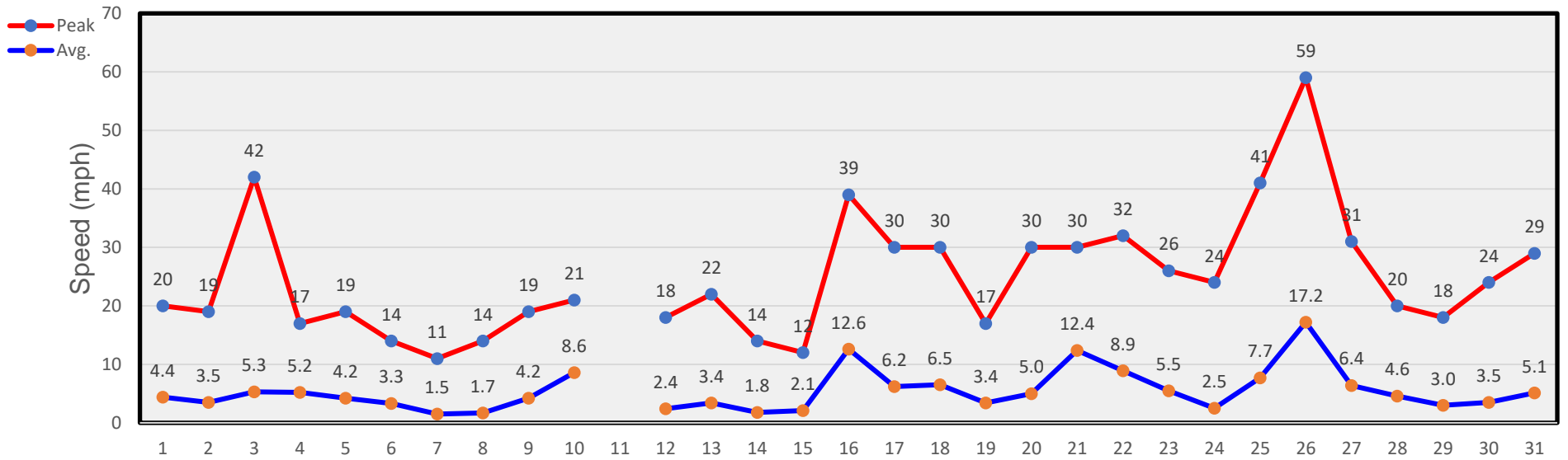
April Winds



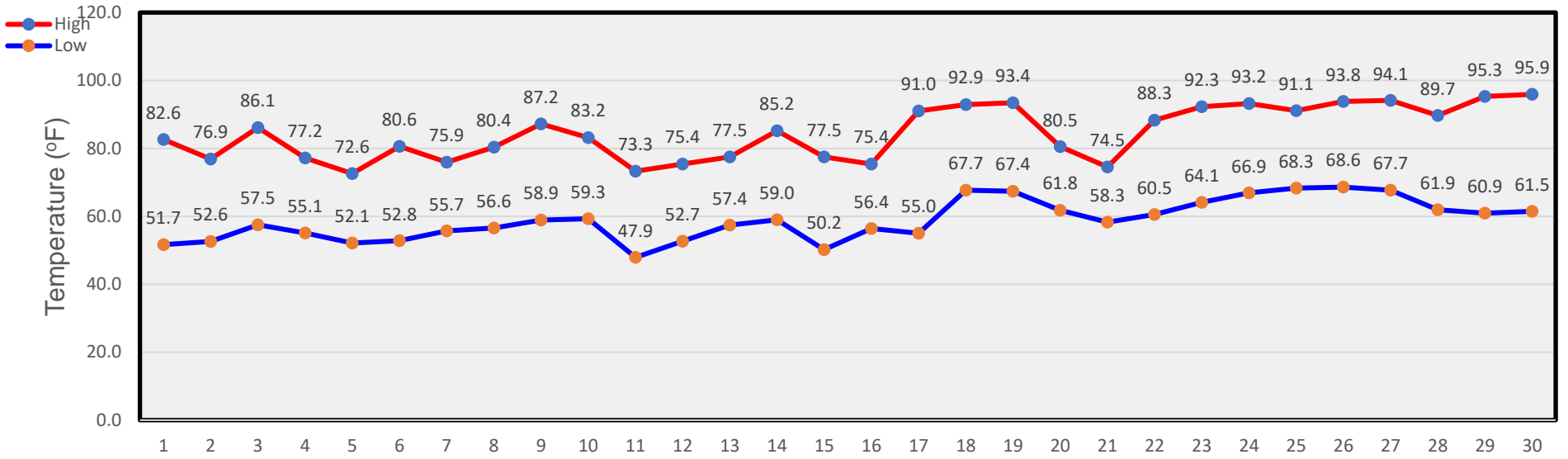
May Temperatures



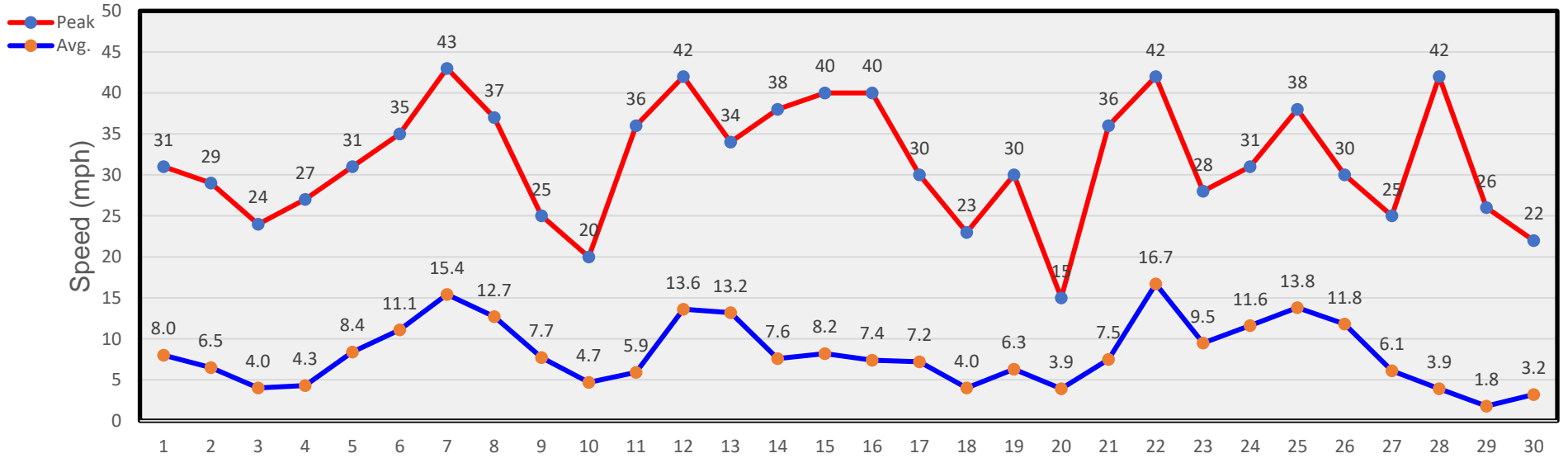
May Winds



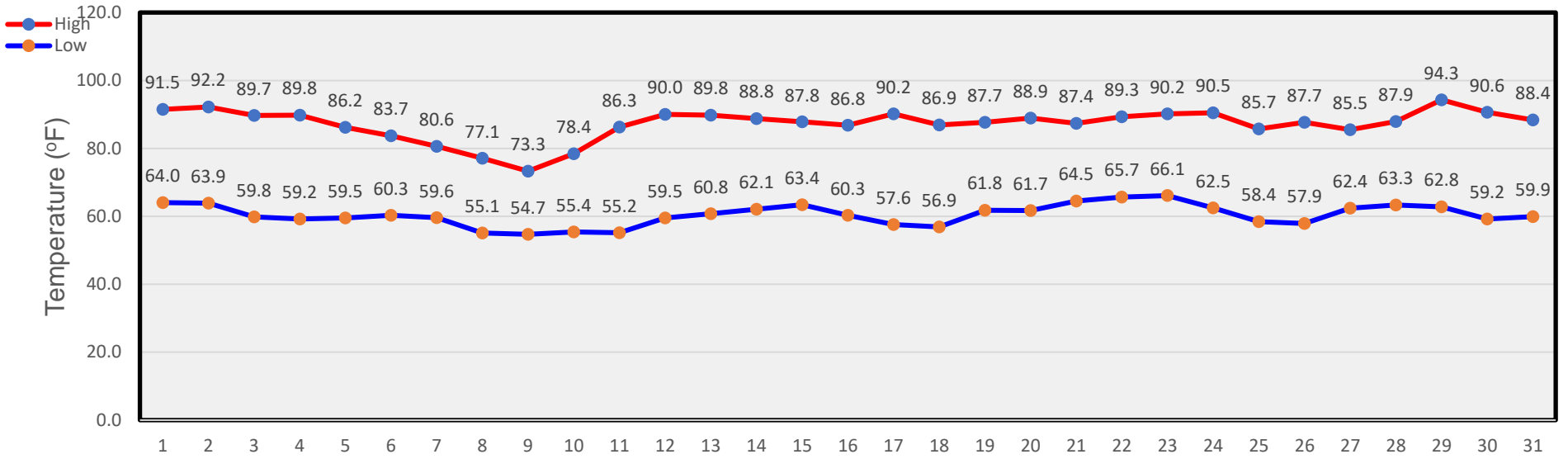
June Temperatures



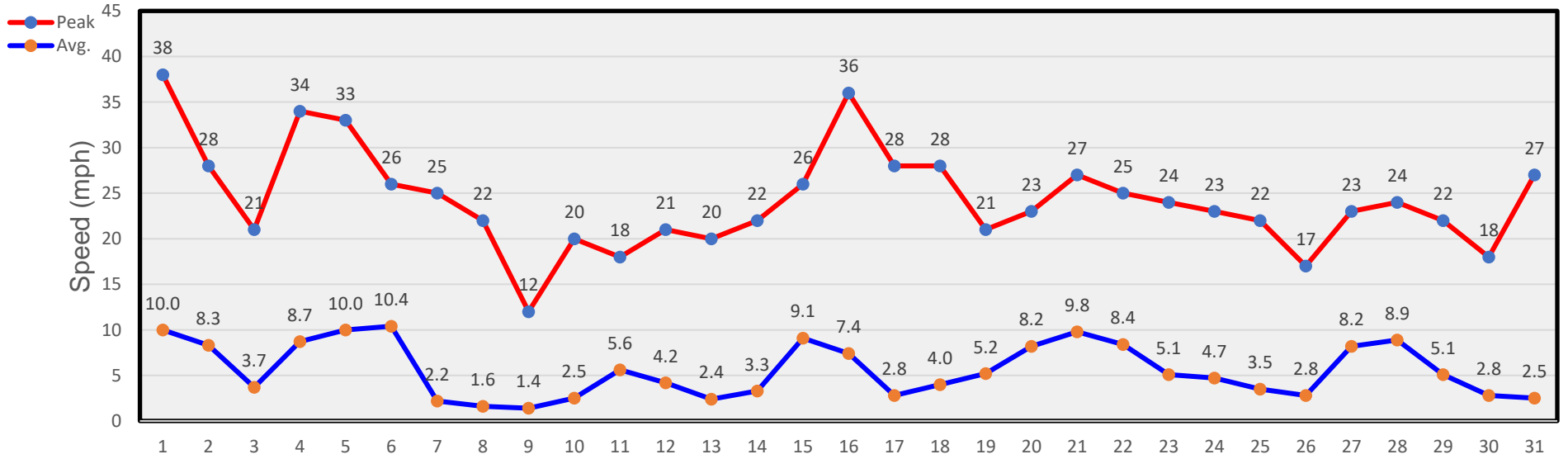
June Winds



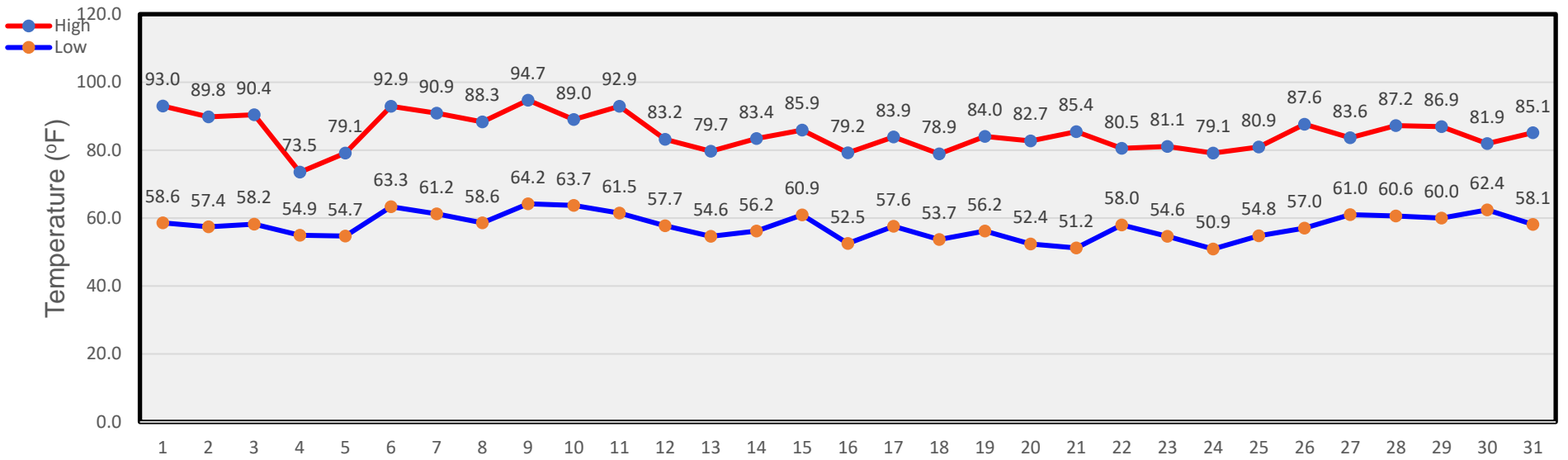
July Temperatures



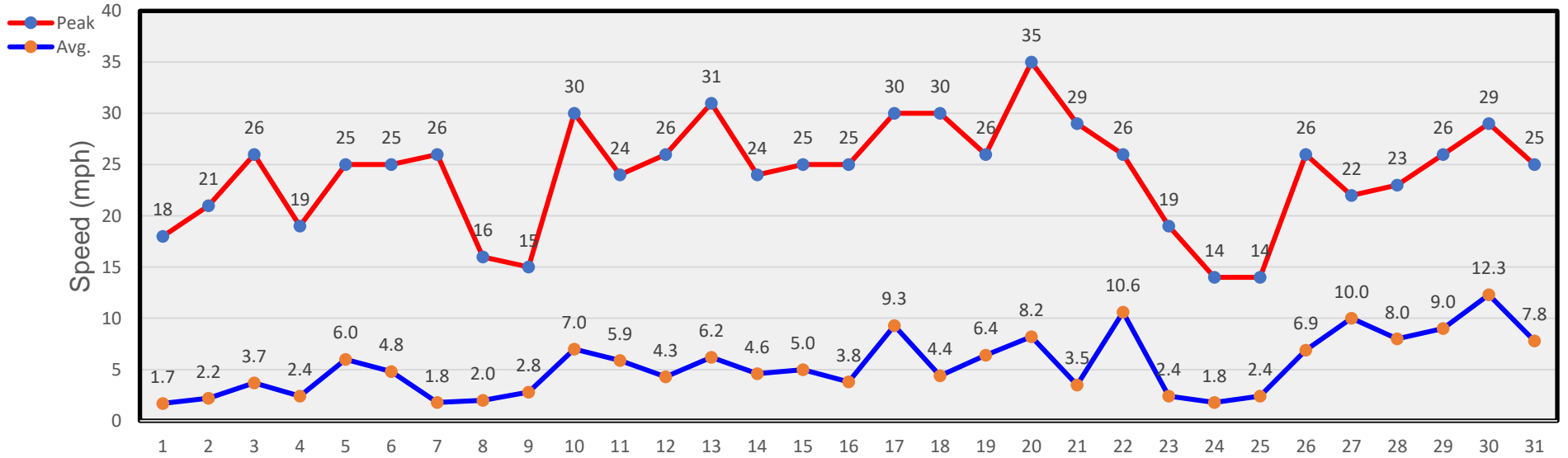
July Winds



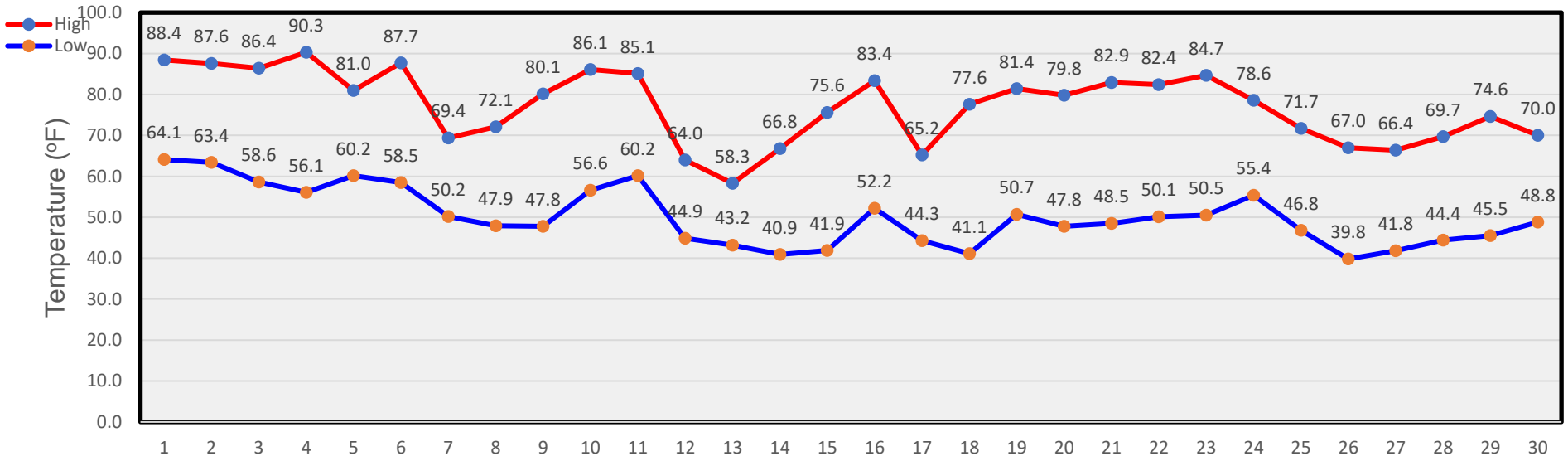
August Temperatures



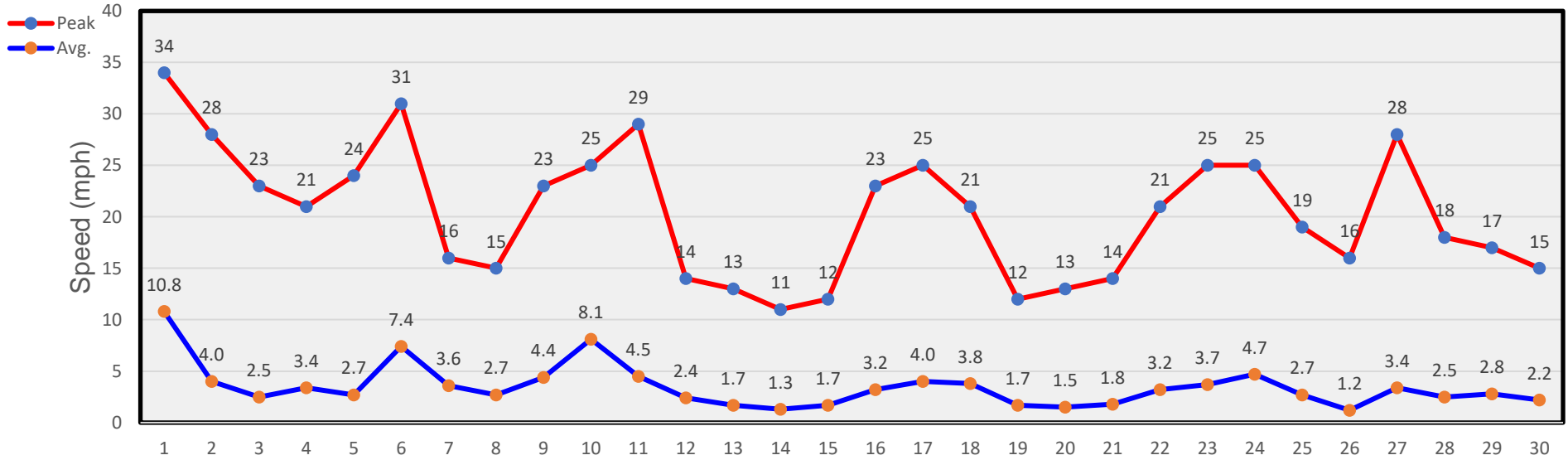
August Winds



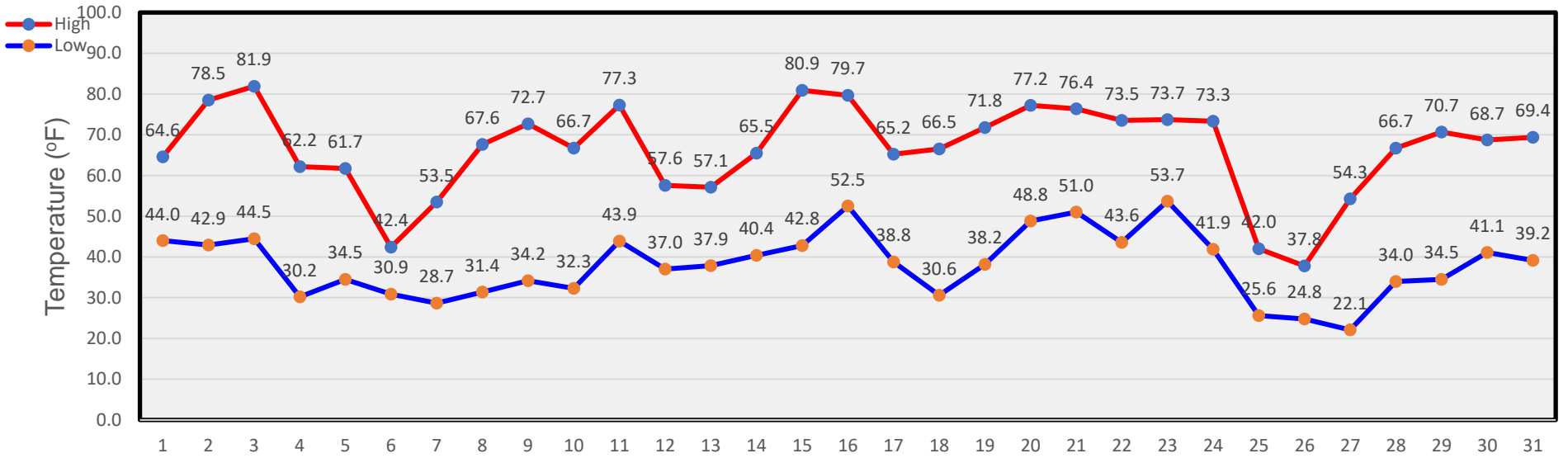
September Temperatures



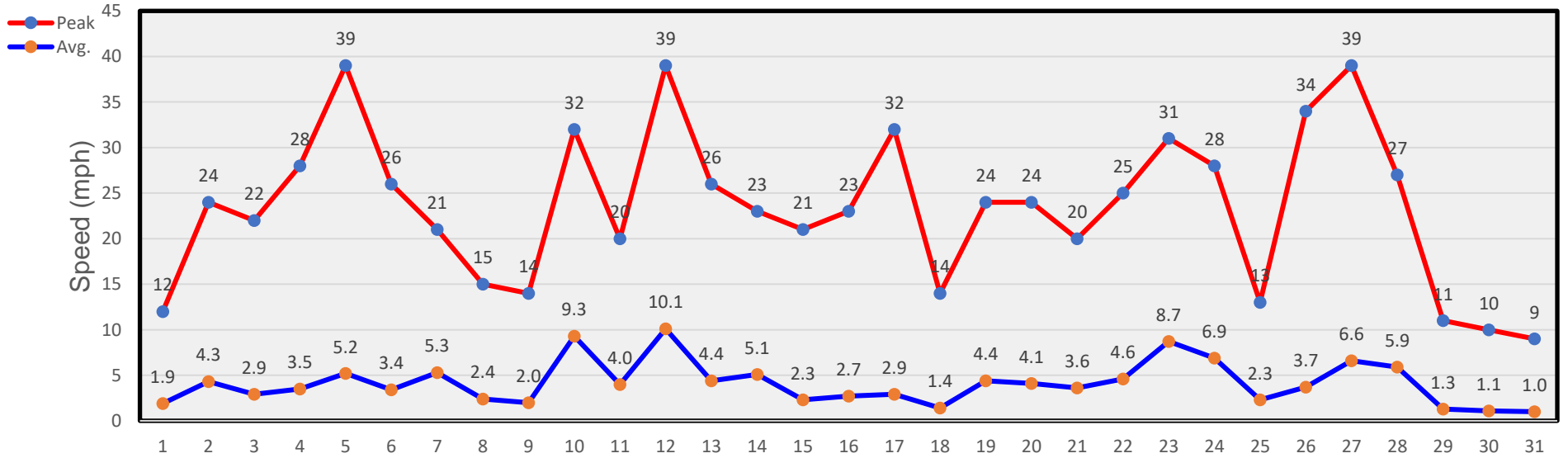
September Winds



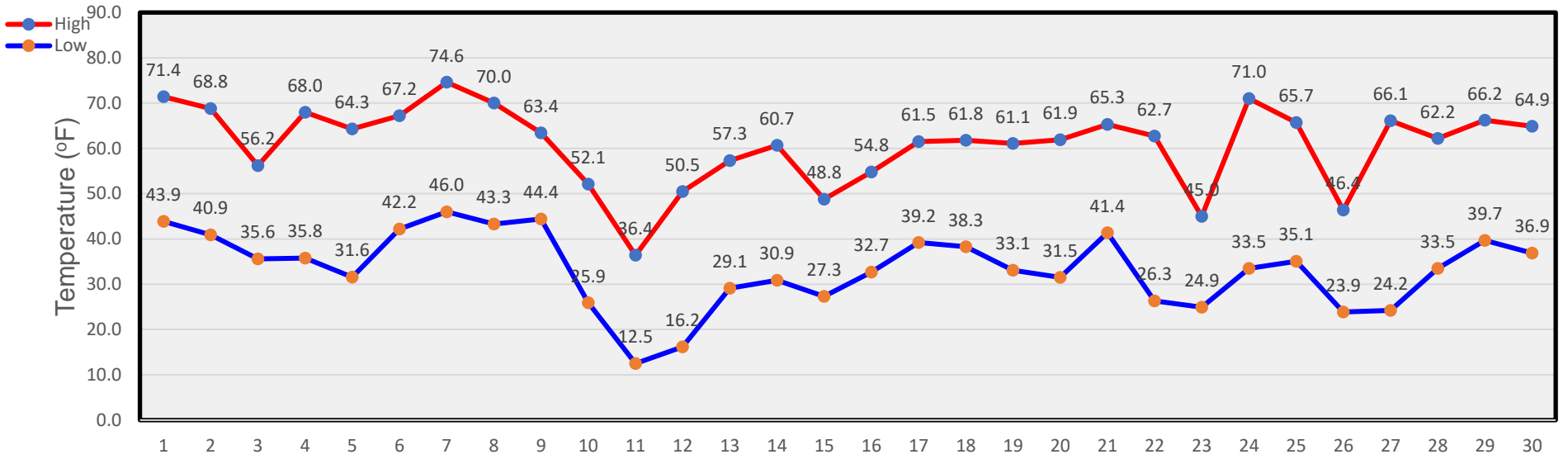
October Temperatures



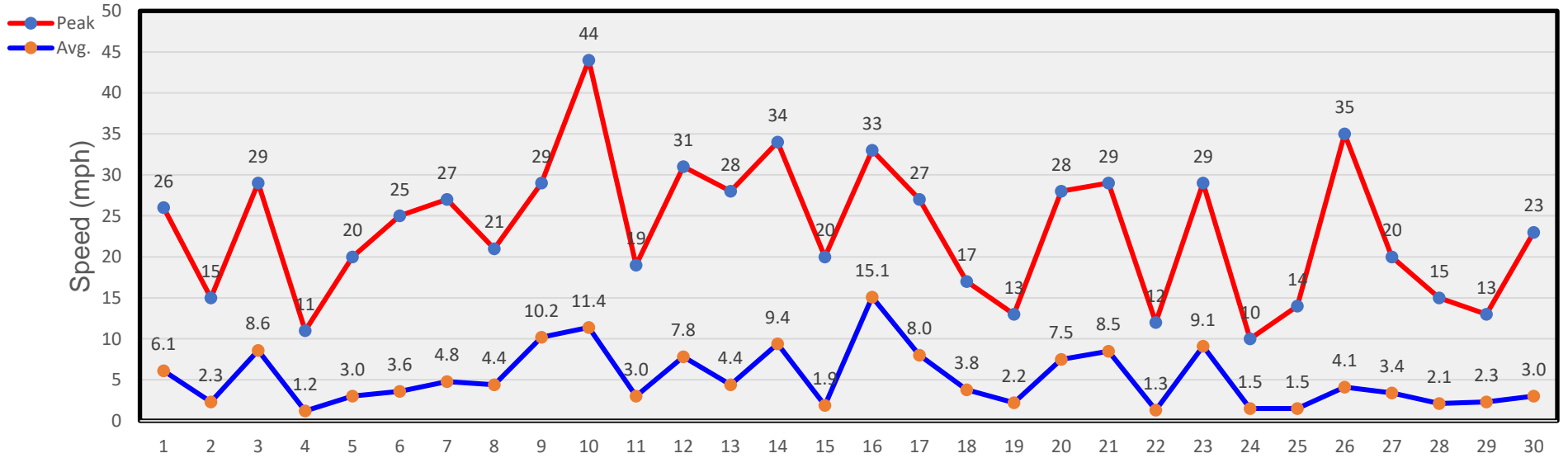
October Winds



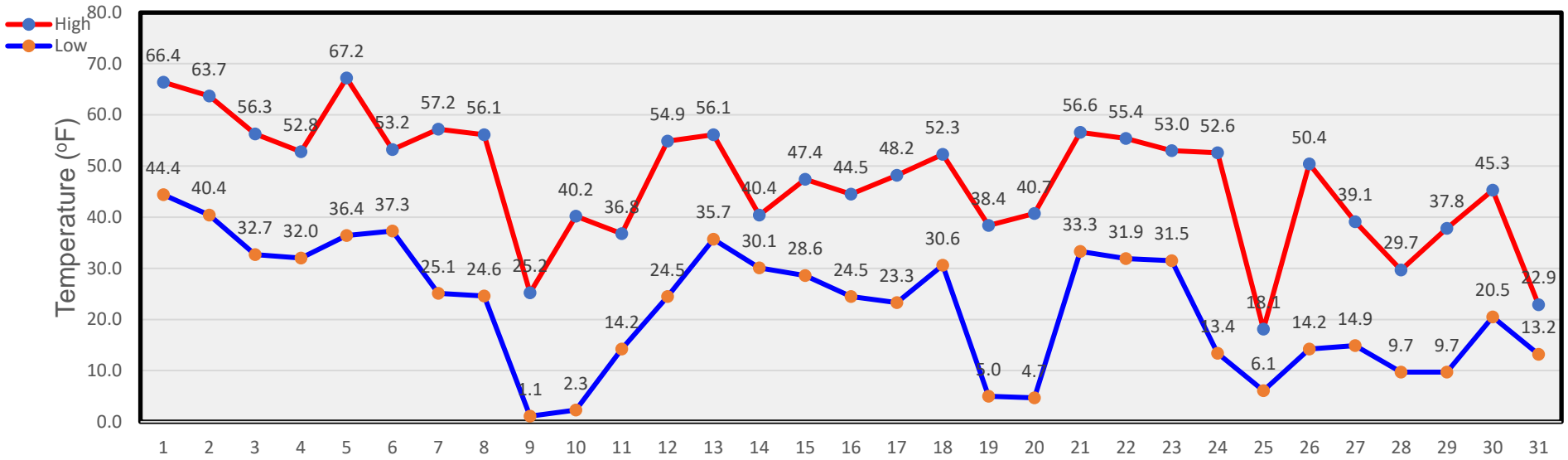
November Temperatures



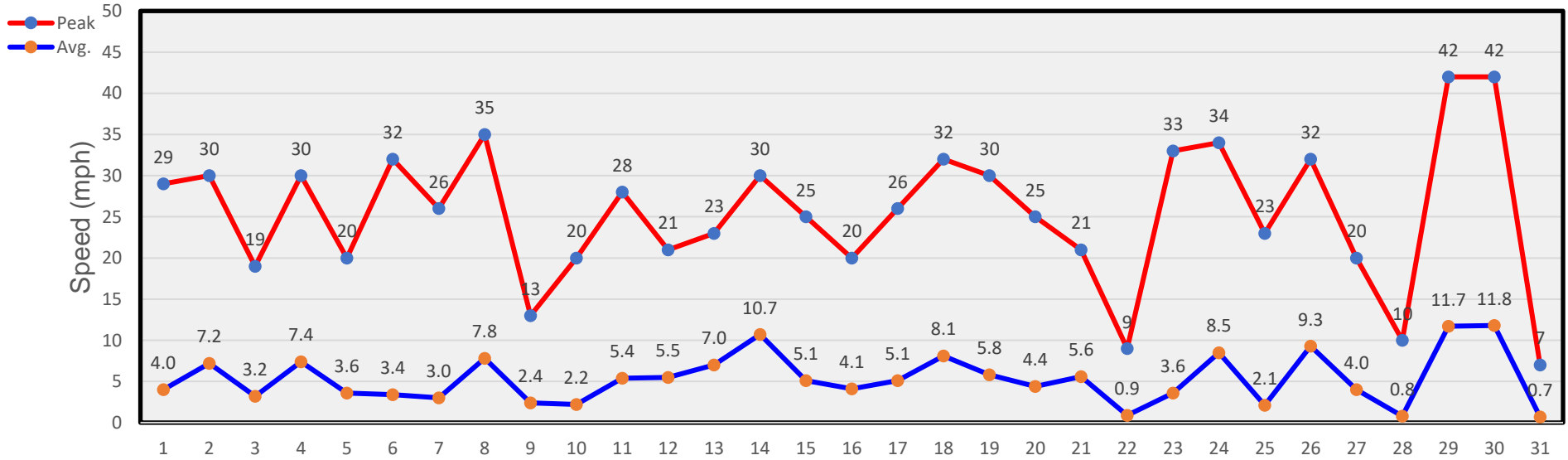
November Winds



December Temperatures



December Winds



Tables

January

Day	Mean Temp.	High Temp.	High Temp. Time	Low Temp.	Low Temp. Time	Heat Degree Days	Cool Degree Days	Precip.	Average Wind Speed	Peak Wind Speed	Peak Wind Time	Wind Dominant Direction
1	26.7	45.1	12:30p	14.7	1:00a	35.1			7.2	38	5:50a	SE
2	34.6	49.7	11:20a	15.6	12:20a	32.3			8.5	29	3:30p	SE
3	45.6	61.3	1:40p	31.6	4:50a	18.5			3.1	15	11:10p	ESE
4	39.5	57.5	1:50p	22.6	7:10a	25.0			6.7	25	5:30p	SE
5	45.5	60.0	1:00p	31.0	4:40a	19.5			7.7	21	4:50p	SE
6	37.2	51.2	10:40a	23.5	10:00p	27.7			3.4	19	2:00p	E
7	30.2	39.6	2:10p	23.7	12:00m	33.4			16.3	45	7:10a	SE
8	23.2	28.6	1:30p	14.3	11:50p	43.5		0.01	3.5	16	3:50a	NNW
9	25.2	38.1	2:30p	11.9	5:00a	40.0			2.9	18	10:50a	E
10	39.7	56.2	3:00p	23.8	12:30a	25.0			5.8	24	4:50p	SSE
11	22.4	38.3	5:00a	9.9	12:00m	40.9		0.01	5.5	25	8:00a	NNW
12	21.5	36.6	2:10p	3.2	4:10a	45.1			4.8	25	5:50p	SE
13	28.7	47.2	1:10p	9.4	3:30a	36.7			4.8	19	12:30p	ESE
14	40.0	57.5	1:20p	21.7	1:20a	25.4			8.8	27	7:00p	SE
15	43.8	59.3	1:20p	32.5	6:20a	19.1			8.5	23	1:20a	SE
16	39.5	51.3	12:00p	17.0	12:00m	30.8			6.2	37	2:40p	SW
17	23.2	33.6	4:40p	13.6	7:40a	41.4			9.4	32	10:40a	SE
18	48.1	59.7	3:20p	36.0	12:10a	17.2			10.6	28	1:30a	SE
19	45.6	56.0	11:40a	33.3	12:00m	20.3			5.2	30	12:00m	SSE
20	43.2	56.3	1:10p	32.3	7:10a	20.7			17.0	42	5:00a	SSE
21	43.2	56.3	1:10p	32.3	7:10a	20.7			17.0	42	5:00a	SSE
22	36.4	45.2	3:00p	24.8	10:10p	30.0			5.8	28	7:50a	WNW
23	36.5	50.5	12:50p	27.3	5:30a	26.1			9.0	31	4:40a	SE
24	33.7	40.3	10:40a	23.8	11:50p	33.0		0.01	6.3	21	10:20a	NNW
25	32.6	51.8	2:00p	13.5	6:20a	32.3			4.8	20	4:00p	SE
26	40.8	51.0	2:00p	25.1	7:50a	27.0			8.9	34	2:20p	SE
27	29.3	38.9	10:00a	18.7	12:00m	36.2		0.01	4.0	28	10:30a	NNW
28	29.4	42.9	3:40p	17.0	1:30a	35.0			11.2	38	6:30a	SE
29	39.8	53.4	11:50a	23.9	3:30a	26.3			8.5	20	12:40p	SE
30	43.7	61.9	1:10p	30.2	11:50p	18.9			5.4	24	11:30a	SE
31	37.7	49.8	2:50p	27.3	6:30a	26.5			7.8	25	5:50p	SE
--	35.7 ¹	61.9 ³	30 th	3.2 ³	12 th	909.7 ²	²	0.04 ²	7.6 ¹	45 ³	7 th	SE

Footnotes: 1. Average; 2. Sum (total); 3. Max or Min
 Heat Base: 65.0 Cool Base: 65.0
 Method: (High + Low) / 2 (per ¼ hour)

- 2nd: About four feet of snow for Dec. 2011.
- 8th: A bit of snow last night and another bit predicted for today
- 25th: A light skiff of snow last night.

February

Day	Mean Temp.	High Temp.	High Temp. Time	Low Temp.	Low Temp. Time	Heat Degree Days	Cool Degree Days	Precip.	Average Wind Speed	Peak Wind Speed	Peak Wind Time	Wind Dominant Direction
1	38.0	52.0	2:30p	24.1	6:20a	27.0			6.9	27	7:20a	SE
2	31.9	37.2	4:50p	24.7	8:00p	34.0			9.7	34	9:10a	SE
3	22.9	25.9	4:30a	19.9	11:20a	42.1		0.02	5.8	24	8:50a	NNW
4	19.0	24.9	2:00p	8.3	12:00m	48.4			4.6	20	2:00p	NNW
5	23.3	35.6	2:20p	8.4	12:10a	43.0			8.2	27	1:10p	SE
6	28.2	41.9	1:20p	20.9	10:40p	33.6			10.8	35	6:00a	SE
7	18.2	22.5	2:00p	10.7	8:10p	48.4		0.20	6.2	37	10:40p	NNW
8	32.9	49.1	2:10p	17.3	12:40a	31.8			8.5	35	1:00a	SSE
9	28.8	40.1	2:00p	20.6	4:30a	34.7			2.3	19	4:30p	NNW
10	29.1	43.0	2:30p	16.5	5:00a	35.3			5.6	27	9:30a	SE
11	16.9	23.9	12:10a	11.7	12:20a	47.2			6.9	38	11:30p	SE
12	20.2	28.3	2:20p	12.9	7:10a	44.4			20.9	48	1:10a	SE
13	34.8	49.1	2:40p	23.1	7:00a	28.9			4.9	20	12:10a	SE
14	38.1	51.1	1:40p	29.2	7:10a	24.8			7.1	23	10:00p	SE
15	29.9	39.3	2:30p	22.5	10:00p	34.1			4.5	22	12:00m	NNW
16	33.4	45.7	4:10p	22.9	7:10a	30.7			12.6	34	2:50a	SE
17	33.7	48.8	2:20p	21.6	5:40a	29.8			5.2	23	1:20a	NNW
18	29.8	42.1	2:00p	16.3	7:20a	35.8			8.6	29	5:30p	SE
19	38.0	52.1	1:40p	27.5	1:40p	25.2			10.7	36	12:40p	SSE
20	29.0	36.5	4:20p	21.0	7:00a	36.3			5.8	25	3:40a	WNW
21	37.5	50.4	4:20p	24.9	7:10a	27.3			5.0	26	12:30a	SE
22	48.0	60.5	3:30p	33.6	2:10a	18.0			5.9	25	12:30p	SE
23	28.4	48.7	1:20a	13.9	11:50p	33.7		0.01	5.4	27	7:10a	NNW
24	25.2	38.6	5:10p	8.1	5:40a	41.7			7.8	39	11:20p	SE
25	44.5	62.0	1:40p	28.8	1:20a	19.6			9.7	34	12:40a	SSE
26	41.3	54.4	1:10p	25.6	11:40p	25.0			5.0	21	3:30a	SSE
27	30.7	39.8	4:10p	22.7	6:40a	33.8			17.6	51	9:50a	SE
28	35.2	41.9	9:10a	30.4	12:10a	28.8			11.0	48	5:10a	WSW
29	40.6	57.5	2:00p	27.8	6:00a	22.3			6.3	23	11:00p	SSE
--	31.3 ¹	62.0 ³	25 th	8.1 ³	24 th	965.6 ²	²	0.23 ²	7.9 ¹	51 ³	27 th	SE

Footnotes: 1. Average; 2. Sum (total); 3. Max or Min
 Heat Base: 65.0 Cool Base: 65.0
 Method: (High + Low) / 2 (per ¼ hour)

- 3rd: 1 to 2 inches of snow this am.
- 7th: Another 1 to 2 inches and still coming down.

March

Day	Mean Temp.	High Temp.	High Temp. Time	Low Temp.	Low Temp. Time	Heat Degree Days	Cool Degree Days	Precip.	Average Wind Speed	Peak Wind Speed	Peak Wind Time	Wind Dominant Direction
1	37.7	51.5	1:40p	19.4	11:40p	29.5			4.4	26	12:50a	WSW
2	20.7	26.0	4:10p	15.5	4:30a	44.3			2.3	13	12:50p	NNW
3	26.4	42.0	4:20p	4.5	6:50a	41.8			5.5	21	1:50p	SE
4	43.8	59.6	4:20p	25.9	4:40a	22.3			7.0	26	11:40p	SE
5	50.0	65.9	2:30p	37.6	8:30p	13.3			9.1	30	7:00a	SE
6	52.8	64.5	2:10p	44.5	5:40a	10.5			10.0	33	12:20p	SSE
7	40.4	53.1	9:40a	27.5	12:00m	24.7			8.9	29	2:20a	NNW
8	23.7	28.5	1:40p	17.2	11:40p	42.1		0.05	4.9	22	7:00a	NNW
9	31.9	48.6	2:20p	16.0	2:50a	32.7		0.01	6.2	28	9:40p	SE
10	35.5	50.6	12:20p	27.8	1:30a	25.8		0.10	6.8	24	8:00a	SSE
11	39.0	55.4	5:40p	27.6	6:00a	23.5		0.14	6.1	28	1:10a	SE
12	48.3	62.7	4:10p	33.3	6:30a	17.0			7.9	22	3:40p	SSE
13	52.9	66.9	3:40p	43.9	5:30a	9.6			10.3	29	1:40p	SSE
14	54.6	68.9	3:00p	41.0	11:00p	10.0			7.4	26	10:30a	SSE
15	50.9	68.1	3:10p	32.5	7:20a	14.7			6.8	22	6:50p	SE
16	56.5	74.1	2:50p	38.5	3:20a	8.7			7.0	22	4:30a	SE
17	57.0	70.3	3:30p	49.6	3:30a	5.0			9.6	30	2:20p	SSE
18	48.8	57.8	4:50p	36.3	12:00m	18.0			15.7	64	4:00p	SSE
19	34.7	45.9	2:20p	24.8	11:20p	29.7			5.1	22	4:10a	SSE
20	25.0	30.4	4:30p	21.7	9:30a	39.0			4.6	24	7:30a	NW
21	34.3	48.0	2:20p	19.5	2:40a	31.3		0.10	4.1	31	2:40p	NNW
22	41.1	51.7	4:20p	32.1	11:30p	23.1			4.8	24	10:50a	NNW
23	53.1	71.3	3:40p	31.5	5:30a	13.6			6.6	21	11:10p	SE
24	55.9	75.1	2:00p	40.9	7:30a	7.0			8.8	27	5:50p	SE
25	60.9	77.9	2:40p	38.6	6:40a	6.8			6.0	35	3:50p	SE
26	58.6	71.4	3:10p	48.9	6:50a	4.8			12.7	42	11:10a	SE
27	58.4	73.9	4:40p	43.0	11:50a	6.5			7.3	27	1:00a	SSE
28	57.5	74.1	3:20p	40.7	2:40a	7.6			4.7	24	1:40p	SSE
29	55.7	69.9	1:00p	43.8	7:30a	8.2			6.3	21	12:20a	SE
30	56.4	72.3	4:30p	44.0	10:50p	6.8			6.1	21	1:30a	SSE
31	60.1	76.9	5:40p	42.4	7:10a	5.3			5.2	21	11:40p	SE
--	45.9 ¹	77.9 ³	25 th	4.5 ³	3 rd	583.1 ²	2	0.40 ²	7.0 ¹	64 ³	18 th	SE

Footnotes: 1. Average; 2. Sum (total); 3. Max or Min
 Heat Base: 65.0 Cool Base: 65.0
 Method: (High + Low) / 2 (per ¼ hour)

• 14th: INFORMATION ABOUT THIS WEATHER DATA:
 We are moving back to Los Alamos, NM (our old hometown) and will be gone for about a week as we start the move. Will post the missing data when we return. Then Bob Scott will be taking over my data station and will be posting the data. I hope you have found this data useful over the past 12 years.... ADIOS AMIGOS!!! Walt

April

Day	Mean Temp.	High Temp.	High Temp. Time	Low Temp.	Low Temp. Time	Heat Degree Days	Cool Degree Days	Precip.	Average Wind Speed	Peak Wind Speed	Peak Wind Time	Wind Dominant Direction
1	63.8	77.8	2:00p	50.6	6:50a	0.8			8.3	25	7:30a	SE
2	38.7	53.7	12:20a	27.0	12:00m	24.7		0.15	10.0	35	6:40p	NNW
3	28.2	31.8	1:00p	26.1	7:00a	36.0		2.50	5.4	24	4:40a	NNW
4	35.3	47.8	3:50p	27.0	1:50a	27.6			2.6	19	11:30p	NNW
5	52.4	66.7	2:00p	35.5	7:00a	13.9			8.1	28	11:00p	SE
6	53.0	68.2	2:20p	39.7	7:10a	11.1			11.7	36	4:30a	SE
7	46.2	61.7	2:30p	19.4	6:50a	24.5			7.6	34	11:30p	SE
8	50.6	67.3	1:20p	36.0	6:20a	13.3			11.3	42	1:40a	SE
9	56.4	70.5	4:30p	40.7	5:30a	9.4			5.7	23	10:30p	SE
10	54.3	68.3	12:40p	38.2	2:30a	11.8			6.7	29	10:00p	SE
11	55.3	67.9	12:50p	48.2	11:20p	6.9		0.02	13.7	49	10:50p	SE
12	53.2	64.2	1:10p	44.0	12:00m	10.9			9.3	40	2:00a	SW
13	50.1	61.8	12:30p	38.0	6:00a	15.1			7.1	30	3:30p	SSE
14	46.6	60.4	12:10p	31.5	12:00m	19.0			9.0	36	12:20p	SE
15	36.0	51.2	2:40p	28.1	3:10a	25.3		0.05	3.8	27	11:00a	NNW
16	40.6	56.1	3:20p	29.1	2:00a	22.4		0.12	4.7	19	7:30a	SE
17	51.4	69.0	3:10p	29.5	4:10a	15.8			5.9	25	1:50p	SSE
18	56.2	74.4	4:20p	33.2	6:10a	11.2			3.9	21	1:40p	E
19	48.5	59.5	12:10a	38.3	11:00p	16.1		0.35	3.6	18	12:30a	NW
20	45.6	63.3	4:20p	31.2	4:20a	17.8		0.03	5.2	27	9:20p	SE
21	53.9	72.0	4:00p	35.7	6:00a	11.2			6.6	29	12:00m	SSE
22	55.6	70.6	3:50p	40.0	6:40a	9.7		0.15	5.7	24	12:10a	SSE
23	59.6	75.1	2:50p	46.5	5:10a	4.2			10.0	31	4:50a	SE
24	66.6	81.7	12:50p	49.2	11:40p		0.4		6.8	23	1:10a	SSE
25												
26	66.4	74.4	3:10p	46.5	12:00m	4.5		0.01	11.5	60	8:50p	SSE
27	56.1	69.8	1:50p	42.4	2:20a	8.9			5.4	29	8:40a	SW
28	48.6	58.0	2:40p	36.7	6:00a	17.7			8.9	40	2:50p	SSE
29	53.7	67.5	5:10p	38.0	6:20a	12.3			4.3	25	2:20p	SW
30	59.0	74.6	4:10p	39.9	6:30a	7.8			3.3	24	1:40p	SSW
--	51.1 ¹	81.7 ³	24 th	19.4 ³	7 th	409.7 ²	0.4 ²	3.38 ²	7.1 ¹	60 ³	26 th	SE

Footnotes: 1. Average; 2. Sum (total); 3. Max or Min
 Heat Base: 65.0 Cool Base: 65.0
 Method: (High + Low) / 2 (per ¼ hour)

- 3rd: Rain last night and then 8 to 10 inches of snow last night and this morning...with more coming down. Love the moisture hate the snow and mud!
- 4th: The precipitation for yesterday is only an approximation based on estimated snow depth and temp. Will try to update later. Sure is a wet snow.
- 25th: Data not available.
- 26th: Walt has come to his senses and will be spending most of his time back in his old stomping grounds. I'll try to continue the weather reports with the use of his equipment. Don't be too surprised if it takes a while for me to get the hang of it... Bob Scott

May

Day	Mean Temp.	High Temp.	High Temp. Time	Low Temp.	Low Temp. Time	Heat Degree Days	Cool Degree Days	Precip.	Average Wind Speed	Peak Wind Speed	Peak Wind Time	Wind Dominant Direction
1	64.1	76.9	1:10p	50.6	5:50a	1.3			4.4	20	1:10p	SW
2	65.8	80.7	3:10p	50.5	6:10a		0.6		3.5	19	6:40p	NNE
3	62.0	74.9	11:50a	44.7	4:20a	5.2			5.3	42	3:00p	SSE
4	70.0	83.8	2:00p	55.5	5:40a		4.7		5.2	17	7:20a	SSW
5	70.3	85.4	3:40p	55.1	6:40a		5.3		4.2	19	2:40p	SSW
6	51.0	62.5	4:00p	42.7	10:10a	12.4		0.38	3.3	14	2:30a	NNE
7	37.3	44.0	2:10a	31.3	6:10a	27.3		0.64	1.5	11	1:40a	NNE
8	45.8	58.7	4:30p	36.7	12:50a	17.3		0.01	1.7	14	10:20p	NNE
9	54.2	68.0	5:50p	38.8	6:40a	11.6			4.2	19	12:10p	SSE
10	49.8	51.9	12:10a	47.4	5:40a	15.3			8.6	21	2:40a	SSE
11												
12	48.1	56.3	3:10p	40.3	10:10a	16.7		0.03	2.4	18	8:20p	NNE
13	46.1	60.5	2:40p	40.1	9:50p	14.7		0.15	3.4	22	8:20a	SSE
14	51.1	64.0	5:50p	39.8	5:30a	13.1		0.25	1.8	14	11:50p	NNE
15	58.5	72.3	2:10p	41.3	5:00a	8.2			2.1	12	12:50p	NNE
16	62.4	72.9	4:00p	50.7	5:30a	3.2			12.6	39	7:30p	SSE
17	64.3	78.6	3:40p	51.0	5:20a	0.2			6.2	30	12:10a	SSE
18	67.5	79.7	4:30p	57.2	3:50a		3.4		6.5	30	2:40p	SSW
19	57.5	72.3	2:20p	42.9	11:50p	7.4			3.4	17	2:50p	NNE
20	53.0	63.7	12:50p	39.7	4:20a	13.3		0.08	5.0	30	10:00p	SSE
21	59.3	71.8	1:40p	51.2	3:40a	3.5			12.4	30	9:50p	SSE
22	69.3	83.4	6:10p	53.0	5:40a		3.2		8.9	32	1:00a	SSE
23	71.4	83.4	3:20p	48.1	11:30p		0.8		5.5	26	6:50p	SW
24	60.4	79.5	2:30p	38.6	6:00a	6.0			2.5	24	4:40p	NNE
25	63.0	67.7	12:10a	40.4	6:30a	11.0			7.7	41	5:00p	SSE
26	71.6	80.6	3:20p	59.2	4:40a		4.9		17.2	59	12:20p	SSE
27	59.9	70.4	3:30p	47.6	12:00m	6.0			6.4	31	2:20p	SW
28	60.5	78.3	4:00p	42.6	3:00a	4.5			4.6	20	11:40a	SW
29	63.8	77.0	3:50p	47.0	5:40a	3.0			3.0	18	9:40p	NNE
30	68.0	82.0	3:20p	52.1	5:20a		2.1		3.5	24	2:20a	NNE
31	58.4	77.0	1:50p	40.5	6:10a	6.3		0.38	5.1	29	7:40p	SE
--	59.5 ¹	85.4 ³	5 th	31.3 ³	7 th	207.4 ²	24.8 ²	1.92 ²	5.4 ¹	59 ³	26 th	SSE

Footnotes: 1. Average; 2. Sum (total); 3. Max or Min
 Heat Base: 65.0 Cool Base: 65.0
 Method: (High + Low) / 2 (per ¼ hour)

- 11th: Data not available
- 14th: We passed 4 inches of rain so far this year.

June

Day	Mean Temp.	High Temp.	High Temp. Time	Low Temp.	Low Temp. Time	Heat Degree Days	Cool Degree Days	Precip.	Average Wind Speed	Peak Wind Speed	Peak Wind Time	Wind Dominant Direction
1	65.7	82.6	3:30p	51.7	4:30a		2.2		8.0	31	5:10a	SSE
2	61.7	76.9	11:40a	52.6	4:20p	0.3		0.11	6.5	29	2:40p	SSE
3	70.4	86.1	2:00p	57.5	3:10a		6.8		4.0	24	4:30a	NNE
4	66.6	77.2	3:00p	55.1	4:20a		1.1		4.3	27	12:10p	SE
5	62.9	72.6	4:40p	52.1	5:50a	2.7			8.4	31	11:40p	SSE
6	64.3	80.6	2:40p	52.8	5:40a		1.7	0.43	11.1	35	7:50p	SSE
7	65.0	75.9	2:10p	55.7	3:50a		0.8		15.4	43	5:00p	SSE
8	68.5	80.4	4:00p	56.6	7:20a		3.5		12.7	37	12:30a	SSE
9	74.5	87.2	2:00p	58.9	5:40a		8.1		7.7	25	8:40a	SSW
10	70.5	83.2	4:00p	59.3	12:00m		6.3		4.7	20	1:30a	NNE
11	62.5	73.3	11:50a	47.9	6:30a	4.4			5.9	36	11:30p	SSE
12	62.3	75.4	1:00p	52.7	5:20a	0.9		0.03	13.6	42	12:40a	SSE
13	66.0	77.5	2:10p	57.4	1:50a		2.4		13.2	34	10:40a	SSE
14	69.7	85.2	11:00a	59.0	6:20a		7.1		7.6	38	2:40p	SSE
15	67.1	77.5	2:30p	50.2	6:10a	1.2			8.2	40	12:00m	SSE
16	64.1	75.4	12:50p	56.4	10:40p		0.9		7.4	40	12:40a	SSE
17	73.8	91.0	5:30p	55.0	4:50a		8.0		7.2	30	5:00a	SSE
18	81.1	92.9	3:10p	67.7	5:30a		15.3		4.0	23	12:50p	SW
19	80.0	93.4	3:20p	67.4	5:40a		15.4		6.3	30	7:00p	SSW
20	71.2	80.5	2:40p	61.8	5:30a		6.2		3.9	15	3:10p	NNE
21	65.1	74.5	4:40p	58.3	6:30a		1.4		7.5	36	10:20p	SSE
22	73.6	88.3	3:40p	60.5	5:50a		9.4		16.7	42	9:10p	SSE
23	78.4	92.3	3:10p	64.1	5:40a		13.2		9.5	28	12:40a	SSE
24	80.5	93.2	3:40p	66.9	5:30a		15.1		11.6	31	6:30p	SSE
25	79.0	91.1	3:10p	68.3	6:20a		14.7		13.8	38	4:30p	SSE
26	81.0	93.8	2:50p	68.6	5:50a		16.2		11.8	30	10:40p	SSE
27	79.7	94.1	3:20p	67.7	5:30a		15.9		6.1	25	12:30a	SSE
28	74.8	89.7	11:00a	61.9	5:10a		10.8		3.9	42	3:30p	SE
29	78.0	95.3	2:00p	60.9	6:20a		13.1		1.8	26	6:20p	NNE
30	78.6	95.9	3:20p	61.5	5:00a		13.7		3.2	22	7:10p	SSE
--	71.2 ¹	95.9 ³	30 th	47.9 ³	11 th	9.4 ²	209.2 ²	0.57 ²	8.2 ¹	43 ³	7 th	SSE

Footnotes: 1. Average; 2. Sum (total); 3. Max or Min
 Heat Base: 65.0 Cool Base: 65.0
 Method: (High + Low) / 2 (per ¼ hour)

- 11th: Precip data is based on the North end. The South end of the ranch had a nice 15-minute downpour in the afternoon

July

Day	Mean Temp.	High Temp.	High Temp. Time	Low Temp.	Low Temp. Time	Heat Degree Days	Cool Degree Days	Precip.	Average Wind Speed	Peak Wind Speed	Peak Wind Time	Wind Dominant Direction
1	75.6	91.5	12:40p	64.0	7:10a		12.8	0.04	10.0	38	10:20p	SSE
2	75.7	92.2	12:20p	63.9	3:40a		13.1	0.12	8.3	28	12:10a	SSE
3	73.1	89.7	2:30p	59.8	5:30a		9.8		3.7	21	12:20a	SSE
4	75.4	89.8	3:00p	59.2	3:00a		9.5		8.7	34	9:50p	SSE
5	71.5	86.2	2:50p	59.5	6:30a		7.8		10.0	33	9:30p	SSE
6	71.5	83.7	3:50p	60.3	5:40a		7.0		10.4	26	11:10a	SSE
7	67.8	80.6	2:10p	59.6	5:40a		5.1		2.2	25	2:20p	NNE
8	62.1	77.1	10:40a	55.1	6:10a		1.1	0.08	1.6	22	1:30p	NNE
9	62.0	73.3	12:40p	54.7	5:00a	1.0		0.01	1.4	12	1:20p	NNE
10	65.7	78.4	3:20p	55.4	5:00a		1.9		2.5	20	12:00m	NNE
11	69.5	86.3	2:50p	55.2	5:10a		5.8		5.6	18	12:10a	SSE
12	74.8	90.0	2:00p	59.5	6:50a		9.8		4.2	21	1:30a	SSE
13	73.1	89.8	1:40p	60.8	6:40a		10.3		2.4	20	12:40a	SSW
14	75.1	88.8	2:00p	62.1	3:20a		10.4		3.3	22	3:40p	SSW
15	76.2	87.8	4:30p	63.4	6:10a		10.6		9.1	26	4:20p	SSE
16	69.3	86.8	1:10p	60.3	6:00a		8.6	0.08	7.4	36	7:40a	SSE
17	69.4	90.2	2:00p	57.6	6:20a		8.9	0.07	2.8	28	4:40p	NNE
18	69.3	86.9	11:50a	56.9	3:30a		6.9	0.12	4.0	28	3:00p	SSE
19	75.6	87.7	2:20p	61.8	6:00p		9.8		5.2	21	3:10p	SSE
20	76.3	88.9	4:20p	61.7	5:50a		10.3		8.2	23	6:30p	SSE
21	76.8	87.4	3:40p	64.5	6:10a		10.9		9.8	27	1:40p	SSE
22	78.1	89.3	4:30p	65.7	5:00a		12.5		8.4	25	4:20p	SSE
23	77.9	90.2	2:50p	66.1	6:40a		13.1		5.1	24	5:10p	SSE
24	76.1	90.5	2:30p	62.5	6:30a		11.5	0.01	4.7	23	9:20p	SSW
25	69.3	85.7	1:50p	58.4	5:10p		7.1	0.13	3.5	22	4:10p	NNE
26	71.2	87.7	3:00p	57.9	6:20a		7.8		2.8	17	8:10p	NNE
27	74.3	85.5	4:20p	62.4	6:20p		8.9		8.2	23	11:50a	SSE
28	74.9	87.9	5:30p	63.3	6:20a		10.6		8.9	24	8:50a	SSE
29	77.1	94.3	2:40p	62.8	6:10a		13.6		5.1	22	4:10a	SSE
30	75.1	90.6	4:00p	59.2	4:30a		9.9		2.8	18	6:20p	NNE
31	71.4	88.4	12:00p	59.9	2:50p		9.2	0.22	2.5	27	2:30p	NNE
--	72.6 ¹	94.3 ³	29 th	54.7 ³	9 th	1.0 ²	274.4 ²	0.88 ²	5.6 ¹	36 ³	16 th	SSE

Footnotes: 1. Average; 2. Sum (total); 3. Max or Min
 Heat Base: 65.0 Cool Base: 65.0
 Method: (High + Low) / 2 (per ¼ hour)

- 3rd: No rain on the North end, but the South got about a half inch.

August

Day	Mean Temp.	High Temp.	High Temp. Time	Low Temp.	Low Temp. Time	Heat Degree Days	Cool Degree Days	Precip.	Average Wind Speed	Peak Wind Speed	Peak Wind Time	Wind Dominant Direction
1	74.9	93.0	3:40p	58.6	5:30a		10.8	0.04	1.7	18	8:40p	NNE
2	69.4	89.8	12:40p	57.4	7:40p		8.6	0.56	2.2	21	8:40p	W
3	72.5	90.4	1:50p	58.2	1:50a		9.3	0.01	3.7	26	5:40p	SSW
4	64.3	73.5	1:40p	54.9	7:10a	0.8			2.4	19	4:10p	NNE
5	66.8	79.1	1:30p	54.7	5:50a		1.9		6.0	25	2:40p	SSE
6	76.7	92.9	3:30p	63.3	6:30a		13.1		4.8	25	1:00a	SSE
7	74.9	90.9	2:30p	61.2	7:50p		11.1	0.02	1.8	26	7:00p	NNE
8	74.3	88.3	3:30p	58.6	6:30a		8.4		2.0	16	12:50p	NNE
9	77.7	94.7	2:20p	64.2	6:00a		14.4		2.8	15	3:30p	NNE
10	71.8	89.0	1:00p	63.7	10:00p		11.3	0.06	7.0	30	7:30a	SSE
11	75.4	92.9	3:50p	61.5	6:00a		12.2		5.9	24	3:20a	SSE
12	66.3	83.2	2:50p	57.7	6:30a		5.4		4.3	26	5:50p	NNE
13	63.5	79.7	1:10p	54.6	5:40a		2.1	0.31	6.2	31	4:00p	SSE
14	68.6	83.4	1:20p	56.2	2:40a		4.8	0.01	4.6	24	6:10a	NNE
15	71.0	85.9	12:30p	60.9	4:10a		8.4		5.0	25	2:00a	SSE
16	64.1	79.2	3:10p	52.5	7:00a		0.8		3.8	25	11:40p	NNE
17	63.5	83.9	3:10p	57.6	7:10a		5.8	0.10	9.3	30	12:50p	SSE
18	66.8	78.9	4:00p	53.7	7:10a		1.3		4.4	30	12:40a	NNE
19	69.2	84.0	4:10p	56.2	5:40a		5.1		6.4	26	8:50p	SSE
20	63.0	82.7	12:10p	52.4	11:30p		2.6	0.07	8.2	35	7:10a	SSE
21	66.5	85.4	3:20p	51.2	6:10a		3.3		3.5	29	9:20p	NNE
22	66.7	80.5	11:50a	58.0	6:40a		4.3		10.6	26	3:30p	SSE
23	66.3	81.1	2:00p	54.6	6:50a		2.8	0.03	2.4	19	12:10a	NNE
24	63.4	79.1	12:00p	50.9	6:00a			0.01	1.8	14	1:00a	NNE
25	68.7	80.9	2:00p	54.8	12:30a		2.8		2.4	14	10:30a	NNE
26	67.0	87.6	12:50p	57.0	3:10p		7.3	0.61	6.9	26	6:20p	SSE
27	71.5	83.6	4:00p	61.0	6:30a		7.3		10.0	22	12:30a	SSE
28	73.6	87.2	12:00p	60.6	5:10a		8.9		8.0	23	12:00m	SSE
29	72.4	86.9	11:50a	60.0	7:00a		8.4		9.0	26	2:30a	SSE
30	70.6	81.9	3:00p	62.4	6:30a		7.2		12.3	29	3:40p	SSE
31	71.4	85.1	3:50p	58.1	7:00a		6.6		7.8	25	12:00m	SSE
--	69.4 ¹	94.7 ³	9 th	50.9 ³	24 th	0.8 ²	196.5 ²	1.83 ²	5.4 ¹	35 ³	20 th	SSE

Footnotes: 1. Average; 2. Sum (total); 3. Max or Min
 Heat Base: 65.0 Cool Base: 65.0
 Method: (High + Low) / 2 (per ¼ hour)

September

Day	Mean Temp.	High Temp.	High Temp. Time	Low Temp.	Low Temp. Time	Heat Degree Days	Cool Degree Days	Precip.	Average Wind Speed	Peak Wind Speed	Peak Wind Time	Wind Dominant Direction
1	74.9	88.4	3:50p	64.1	3:10a		11.3		10.8	34	10:30p	SSE
2	73.4	87.6	1:10p	63.4	8:10a		10.5		4.0	28	12:30a	NNE
3	69.7	86.4	3:20p	58.6	5:40a		7.5		2.5	23	4:10p	NNE
4	72.4	90.3	2:40p	56.1	3:20a		8.2		3.4	21	9:20p	SSE
5	68.9	81.0	3:10p	60.2	8:40a		5.6		2.7	24	12:00m	NNE
6	71.5	87.7	12:50p	58.5	7:00a		8.1		7.4	31	9:50p	SSE
7	60.3	69.4	2:10p	50.2	12:00m	5.2			3.6	16	2:30a	NNE
8	57.8	72.1	5:50p	47.9	1:50a	5.0			2.7	15	7:50a	SE
9	63.6	80.1	2:30p	47.8	7:20a	1.1			4.4	23	10:50p	SSE
10	69.6	86.1	1:50p	56.6	7:10a		6.3		8.1	25	2:10a	SSE
11	70.3	85.1	12:20p	60.2	6:20a		7.7		4.5	29	2:10p	SSW
12	53.4	64.0	1:30a	44.9	7:20p	10.5		0.67	2.4	14	2:50a	NNE
13	48.5	58.3	3:40p	43.2	12:00m	14.3		0.09	1.7	13	3:10p	NNE
14	52.7	66.8	3:00p	40.9	3:30a	11.1			1.3	11	3:40p	NNE
15	58.8	75.6	2:40p	41.9	7:10a	6.3			1.7	12	10:50p	NNE
16	67.2	83.4	3:30p	52.2	3:30a		2.8		3.2	23	10:50p	SSE
17	53.7	65.2	1:40p	44.3	11:50p	10.3			4.0	25	12:50p	NNE
18	59.7	77.6	2:50p	41.1	1:40a	5.7			3.8	21	10:10p	SSE
19	66.0	81.4	1:30p	50.7	4:50a		1.1		1.7	12	3:50p	NNE
20	63.3	79.8	1:20p	47.8	7:20a	1.2			1.5	13	1:50p	NNE
21	65.5	82.9	1:20p	48.5	6:50a		0.7		1.8	14	3:00p	NNE
22	65.9	82.4	4:20p	50.1	5:40a		1.3		3.2	21	5:10p	NNE
23	68.7	84.7	2:10p	50.5	4:00a		2.6		3.7	25	12:20a	SSE
24	63.6	78.6	12:40p	55.4	11:40p		2.0	0.05	4.7	25	2:50a	SSE
25	58.8	71.7	12:00p	46.8	12:00m	5.8			2.7	19	6:40p	SSW
26	51.0	67.0	11:20a	39.8	7:20a	11.6		0.15	1.2	16	4:00p	NNE
27	52.9	66.4	2:40p	41.8	5:30a	10.9		0.03	3.4	28	12:10p	SE
28	54.6	69.7	1:00p	44.4	4:50a	8.0			2.5	18	2:10p	SE
29	58.2	74.6	1:40p	45.5	7:40a	5.0			2.8	17	10:00p	SSE
30	58.7	70.0	12:00p	48.8	7:30a	5.6			2.2	15	2:20a	NNE
--	62.5 ¹	90.3 ³	4 th	39.8 ³	26 th	117.3 ²	75.5 ²	0.99 ²	3.5 ¹	34 ³	1 st	SSE

Footnotes: 1. Average; 2. Sum (total); 3. Max or Min
 Heat Base: 65.0 Cool Base: 65.0
 Method: (High + Low) / 2 (per ¼ hour)

October

Day	Mean Temp.	High Temp.	High Temp. Time	Low Temp.	Low Temp. Time	Heat Degree Days	Cool Degree Days	Precip.	Average Wind Speed	Peak Wind Speed	Peak Wind Time	Wind Dominant Direction
1	53.5	64.6	3:00p	44.0	11:50p	10.7		0.01	1.9	12	1:30p	NNE
2	60.2	78.5	3:50p	42.9	1:20a	4.3			4.3	24	10:30p	SSE
3	65.4	81.9	1:50p	44.5	12:00m	1.8			2.9	22	12:20a	W
4	44.0	62.2	4:20p	30.2	7:30a	18.8			3.5	28	3:20p	NNE
5	44.2	61.7	2:40p	34.5	12:00m	16.9			5.2	39	2:00a	NNE
6	33.6	42.4	3:40p	30.9	6:20a	28.3			3.4	26	8:00a	NNE
7	37.4	53.5	4:10p	28.7	7:00a	23.9			5.3	21	9:20p	SSE
8	51.3	67.6	1:10p	31.4	7:10a	15.5			2.4	15	11:20a	SSW
9	54.3	72.7	2:20p	34.2	12:00m	11.6			2.0	14	12:50p	NNE
10	50.2	66.7	2:50p	32.3	1:20a	15.5			9.3	32	4:20p	SSE
11	62.3	77.3	12:40p	43.9	12:00m	4.4			4.0	20	6:20p	NNE
12	48.3	57.6	12:30p	37.0	3:20a	17.7		0.13	10.1	39	11:50a	SSE
13	47.6	57.1	4:00p	37.9	6:40a	17.5			4.4	26	2:40p	SSW
14	52.5	65.5	1:20p	40.4	2:30a	12.0			5.1	23	8:40p	SSE
15	61.1	80.9	1:50p	42.8	6:50a	3.2			2.3	21	2:50p	SSW
16	64.0	79.7	3:00p	52.5	7:20a		1.1		2.7	23	12:50p	SW
17	54.5	65.2	4:30p	38.8	11:30p	13.0			2.9	32	4:00p	NNE
18	47.2	66.5	2:10p	30.6	7:10a	16.5			1.4	14	2:20p	NNE
19	55.8	71.8	12:00p	38.2	12:40a	10.0			4.4	24	4:00p	SE
20	63.2	77.2	12:10p	48.8	7:40a	2.0			4.1	24	5:10p	SE
21	62.4	76.4	2:20p	51.0	7:40a	1.3			3.6	20	6:40p	SSW
22	58.8	73.5	2:10p	43.6	6:10a	6.5			4.6	25	11:00p	SSW
23	63.2	73.7	3:30p	53.7	4:00a	1.3			8.7	31	2:20p	SSE
24	59.3	73.3	2:50p	41.9	12:00m	7.4			6.9	28	4:10p	NNE
25	32.0	42.0	12:10p	25.6	8:50a	31.2			2.3	13	12:20a	NNE
26	29.7	37.8	4:40p	24.8	7:00a	33.7		0.16	3.7	34	11:40p	NNE
27	36.0	54.3	3:10p	22.1	7:20a	26.8			6.6	39	3:30a	SSE
28	47.9	66.7	1:50p	34.0	12:10a	14.7			5.9	27	4:10a	SSE
29	52.8	70.7	1:10p	34.5	7:20a	12.4			1.3	11	7:20p	NNE
30	53.7	68.7	3:50p	41.1	7:50a	10.1			1.1	10	12:10p	NNE
31	53.3	69.4	1:40p	39.2	7:00a	10.7			1.0	9	1:00p	NNE
--	51.6 ¹	81.9 ³	3 rd	22.1 ³	27 th	399.6 ²	1.1 ²	0.30 ²	4.1 ¹	39 ³	5 th	SSE

Footnotes: 1. Average; 2. Sum (total); 3. Max or Min
 Heat Base: 65.0 Cool Base: 65.0
 Method: (High + Low) / 2 (per ¼ hour)

November

Day	Mean Temp.	High Temp.	High Temp. Time	Low Temp.	Low Temp. Time	Heat Degree Days	Cool Degree Days	Precip.	Average Wind Speed	Peak Wind Speed	Peak Wind Time	Wind Dominant Direction
1	57.7	71.4	3:40p	43.9	2:40a	7.3			6.1	26	2:20p	SSE
2	53.7	68.8	12:10p	40.9	11:30p	10.1			2.3	15	1:00p	NNE
3	45.8	56.2	2:40p	35.6	6:00a	19.1			8.6	29	1:40p	SSE
4	49.9	68.0	1:20p	35.8	5:30a	13.1			1.2	11	12:10a	NNE
5	47.9	64.3	3:10p	31.6	6:20a	17.0			3.0	20	8:10p	SSE
6	53.8	67.2	12:30p	42.2	12:10a	10.3			3.6	25	11:30p	SSE
7	58.6	74.6	12:50p	46.0	5:20a	4.7			4.8	27	2:10a	SSE
8	56.9	70.0	1:10p	43.3	7:10a	8.3			4.4	21	11:10p	SSW
9	53.2	63.4	2:10p	44.4	11:10p	11.1			10.2	29	8:10p	SSE
10	39.6	52.1	10:00a	25.9	10:30p	26.0			11.4	44	7:20a	SSE
11	24.7	36.4	11:30a	12.5	6:50a	40.5			3.0	19	2:00p	SSW
12	33.2	50.5	12:20p	16.2	2:00a	31.7			7.8	31	9:30p	SSE
13	40.5	57.3	11:40a	29.1	10:20p	21.8			4.4	28	12:10a	NNE
14	45.3	60.7	4:10p	30.9	12:10a	19.2			9.4	34	7:20a	SSE
15	37.5	48.8	2:20p	27.3	7:10a	27.0			1.9	20	11:40p	NNE
16	42.2	54.8	2:30p	32.7	12:30a	21.3			15.1	33	12:30p	SSE
17	49.6	61.5	1:50p	39.2	12:30a	14.7			8.0	27	5:50p	SSE
18	48.7	61.8	1:40p	38.3	11:10p	15.0			3.8	17	1:20a	SSW
19	46.2	61.1	1:20p	33.1	7:10a	17.9			2.2	13	11:10p	SSW
20	47.9	61.9	1:50p	31.5	5:30a	18.3			7.5	28	8:40p	SSE
21	51.5	65.3	11:50a	41.4	1:50a	11.6			8.5	29	12:20a	SSE
22	46.7	62.7	1:30p	26.3	12:00m	20.5			1.3	12	12:10a	NNE
23	34.8	45.0	3:30p	24.9	3:20a	30.0			9.1	29	7:50p	SSE
24	52.5	71.0	2:00p	33.5	2:50a	12.8			1.5	10	12:10a	SSW
25	49.7	65.7	2:00p	35.1	5:50a	14.6			1.5	14	2:10p	SW
26	32.3	46.4	1:00a	23.9	6:00p	29.8			4.1	35	11:10p	NNE
27	45.8	66.1	1:20p	24.2	12:20a	19.8			3.4	20	3:40a	SW
28	46.1	62.2	2:20p	33.5	5:40a	17.2			2.1	15	4:40p	NNE
29	50.5	66.2	2:40p	39.7	3:10a	12.1			2.3	13	8:30a	SSW
30	51.2	64.9	1:20p	36.9	7:00a	14.1			3.0	23	9:00p	SSW
--	46.5 ¹	74.6 ³	7 th	12.5 ³	11 th	536.9 ²	2	2	5.2 ¹	44 ³	10 th	SSE

Footnotes: 1. Average; 2. Sum (total); 3. Max or Min
 Heat Base: 65.0 Cool Base: 65.0
 Method: (High + Low) / 2 (per ¼ hour)

December

Day	Mean Temp.	High Temp.	High Temp. Time	Low Temp.	Low Temp. Time	Heat Degree Days	Cool Degree Days	Precip.	Average Wind Speed	Peak Wind Speed	Peak Wind Time	Wind Dominant Direction
1	53.2	66.4	3:20p	44.4	7:40a	9.6			4.0	29	11:40p	SSW
2	50.4	63.7	2:50p	40.4	4:40a	12.9			7.2	30	2:10a	SSE
3	45.9	56.3	12:00p	32.7	10:20p	20.5			3.2	19	1:00a	NNE
4	41.8	52.8	1:40p	32.0	7:30a	22.6			7.4	30	7:30p	SSE
5	52.0	67.2	12:50p	36.4	12:30a	13.2			3.6	20	7:10a	SSE
6	43.6	53.2	1:20p	37.3	11:50p	19.8			3.4	32	10:50p	NNE
7	40.7	57.2	2:50p	25.1	12:00m	23.8			3.0	26	1:50a	W
8	38.4	56.1	1:10p	24.6	1:30a	24.7			7.8	35	5:10a	SSE
9	11.9	25.2	12:10a	1.1	11:00p	51.8		0.25	2.4	13	8:10a	NNE
10	19.9	40.2	2:30p	2.3	6:30a	43.8			2.2	20	4:10p	SE
11	24.8	36.8	2:00p	14.2	7:30a	39.5			5.4	28	5:20p	SSE
12	42.1	54.9	11:30a	24.5	12:10a	25.3			5.5	21	7:40p	SSW
13	43.2	56.1	2:20p	35.7	6:40a	19.1			7.0	23	11:20p	SSE
14	35.3	40.4	4:20a	30.1	8:20a	29.8			10.7	30	1:10p	SSE
15	35.0	47.4	1:00p	28.6	6:00a	27.0			5.1	25	10:30p	SSE
16	32.2	44.5	11:40a	24.5	6:10a	30.5			4.1	20	1:00a	SE
17	35.2	48.2	3:30p	23.3	3:30a	29.3			5.1	26	12:20p	SSW
18	39.7	52.3	2:10p	30.6	12:20a	23.5			8.1	32	4:40p	SSE
19	20.8	38.4	1:30a	5.0	12:00m	43.3		0.20	5.8	30	6:10a	NNE
20	26.8	40.7	11:20a	4.7	12:30a	42.3		0.06	4.4	25	2:40p	SSW
21	43.6	56.6	1:10p	33.3	2:40a	20.1			5.6	21	1:20p	SSE
22	41.1	55.4	1:20p	31.9	6:10a	21.3			0.9	9	1:40a	SSW
23	41.3	53.0	2:40p	31.5	11:20p	22.8			3.6	33	12:00m	SSW
24	35.5	52.6	1:20p	13.4	12:00m	32.0			8.5	34	12:20a	SSE
25	11.8	18.1	2:40p	6.1	8:00a	52.9		0.01	2.1	23	11:50p	NNE
26	28.3	50.4	1:50p	14.2	1:50a	32.7		0.03	9.3	32	5:00a	SSE
27	26.7	39.1	2:30p	14.9	12:00m	38.0			4.0	20	7:20a	NNE
28	17.7	29.7	1:50p	9.7	7:50a	45.3			0.8	10	3:40p	NNE
29	24.0	37.8	12:20p	9.7	5:30a	41.3			11.7	42	10:00p	SSE
30	30.2	45.3	11:30a	20.5	3:10a	32.1			11.8	42	1:10a	SSE
31	17.5	22.9	2:20p	13.2	9:50p	47.0			0.7	7	2:10p	NNE
--	33.9 ¹	67.2 ³	5 th	1.1 ³	9 th	937.6 ²	²	0.55 ²	5.3 ¹	42 ³	29 th	SSE

Footnotes: 1. Average; 2. Sum (total); 3. Max or Min
 Heat Base: 65.0 Cool Base: 65.0
 Method: (High + Low) / 2 (per ¼ hour)