



Santa Fe Trail Ranch

Climatological Data
for

2004

The climatological data in this document represents a compilation of the Weather Stats pages from the original Santa Fe Trail Ranch web site and continuing data collection since moving to the new SFTR web site.

Until April 2012, longtime resident Walt Wolff collected and posted daily weather data. But the wintery weather and work associated with maintaining the beautiful Loma Lobo property caused Joyce and Walt to switch to part-time status. Walt gave Robert L. Scott the weather equipment and Bob posted the weather updates until his equipment failed in January 2018. Since then, the data has come from the StargateCOlorado weather station (same type of equipment that Walt/Bob used) maintained by Ernie Parker / Sharon Sorenson.

The data is broken into two sections: the charts in the first section are a synopsis of the weather on the Ranch. For more detailed data (and an aid to help you sleep!), see the monthly climatological tables in the second section.

Notes:

- The StargateCOlorado weather station is at the south end of the Ranch and at a higher elevation than the station maintained by Walt Wolff & Bob Scott. As a result, you will find that, on average, the temperature readings will be slightly lower, and the precipitation readings will be slightly higher than those reported by Bob/Walt's stations.
- The data shown on the various pages starts at a high level and gets more detailed the further down you go.
 - The highest-level charts show the precipitation, snow, temperature, and winds for the entire year.
 - The middle-level charts show the temperature and winds for each month of the year.
 - The lowest-level tables provide all the data collected by the weather station.
 - The snow data has only been collected since 2015 by Ernie / Sharon and does not come from the weather station.
 - What's the definition of "Mean Temperature"? Unlike most weather information, where the "Average Temperature" is just the average of the highest and lowest temperatures of the day, the weather station captures the temperature every 15 minutes, collecting 96 readings per day. The "Mean Temperature" is the average of all 96 readings, giving you a more accurate value.
- Prior to 2022, the times shown in the climatological tables are based on a 12-hour (AM/PM) clock. Starting in 2022, the times listed are based on a 24-hour clock. The data collection program suddenly switched modes.

Enjoy!!

--Ernie Parker

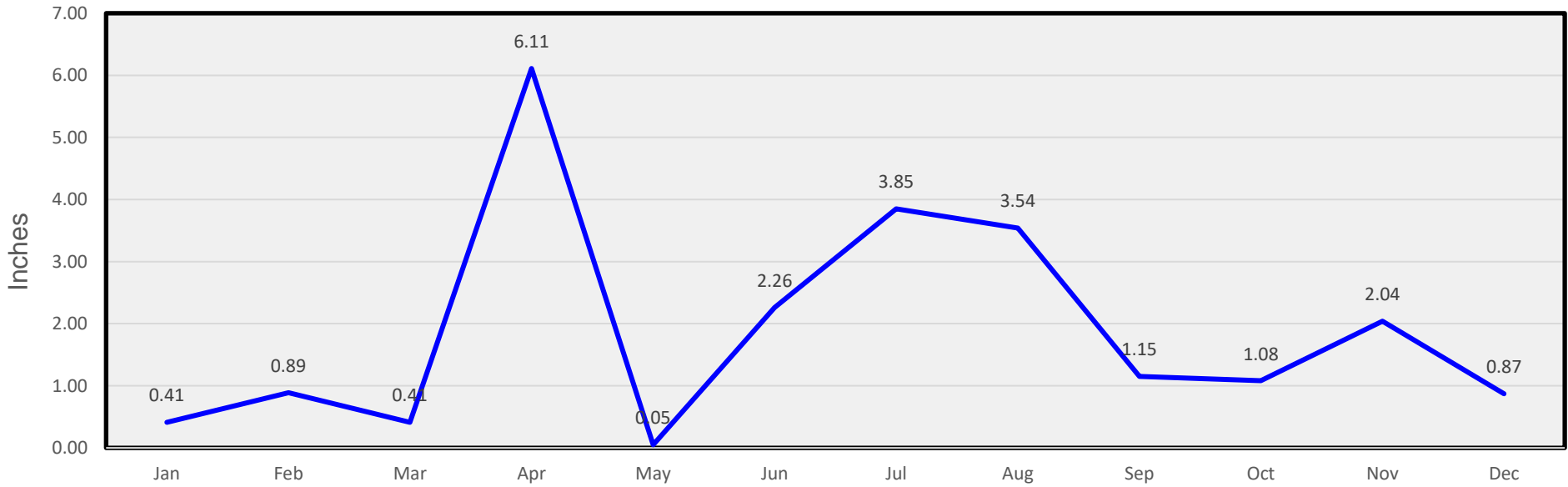
Contents

Charts	5
Monthly Precipitation.....	6
Monthly Snow	6
Monthly Temperatures	7
Monthly Winds	7
January Temperatures.....	8
January Winds	8
February Temperatures	9
February Winds.....	9
March Temperatures.....	10
March Winds	10
April Temperatures	11
April Winds.....	11
May Temperatures.....	12
May Winds	12
June Temperatures.....	13
June Winds	13
July Temperatures	14
July Winds.....	14
August Temperatures	15
August Winds.....	15
September Temperatures.....	16
September Winds	16
October Temperatures.....	17
October Winds	17
November Temperatures.....	18
November Winds	18
December Temperatures.....	19
December Winds	19

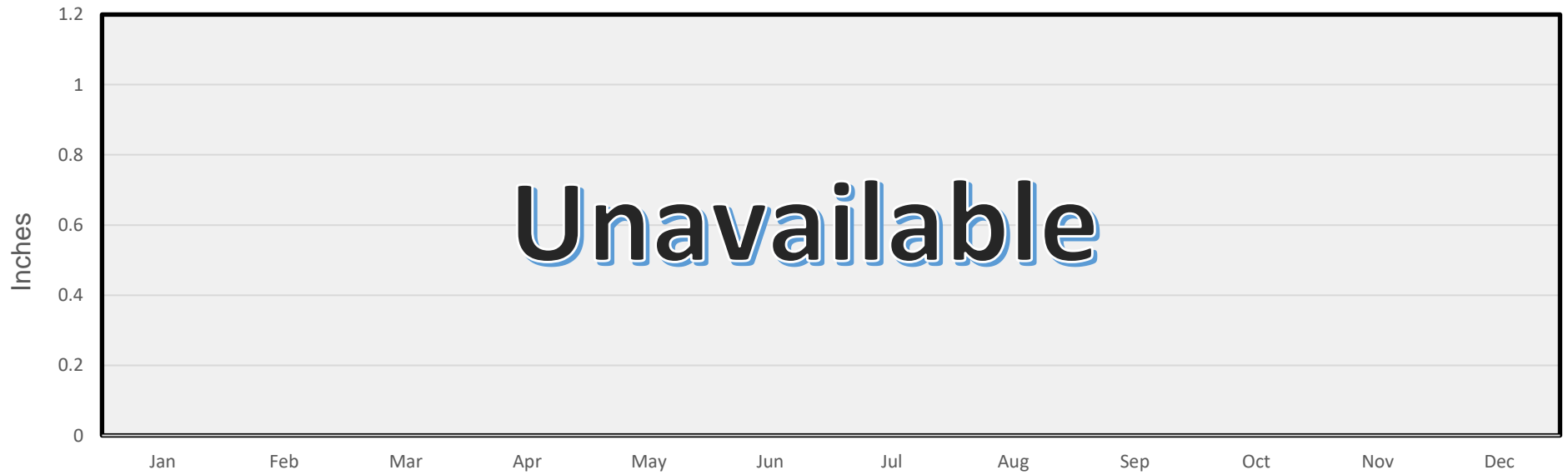
Tables	20
January	21
February	22
March	23
April	24
May	25
June	26
July	27
August	28
September	29
October	30
November	31
December	32

Charts

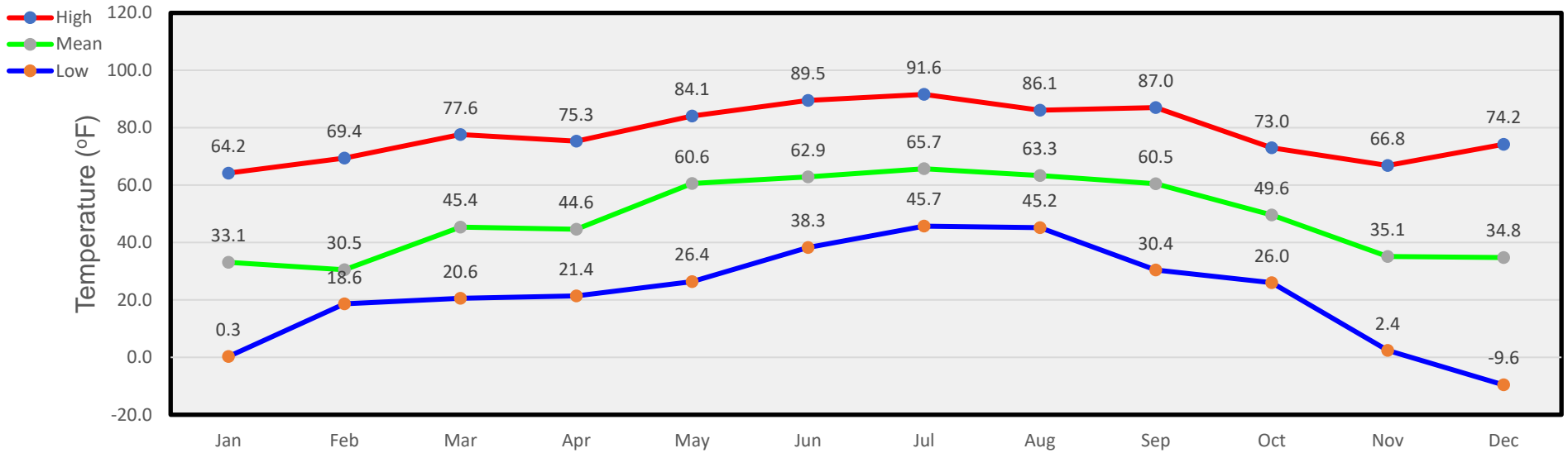
Monthly Precipitation



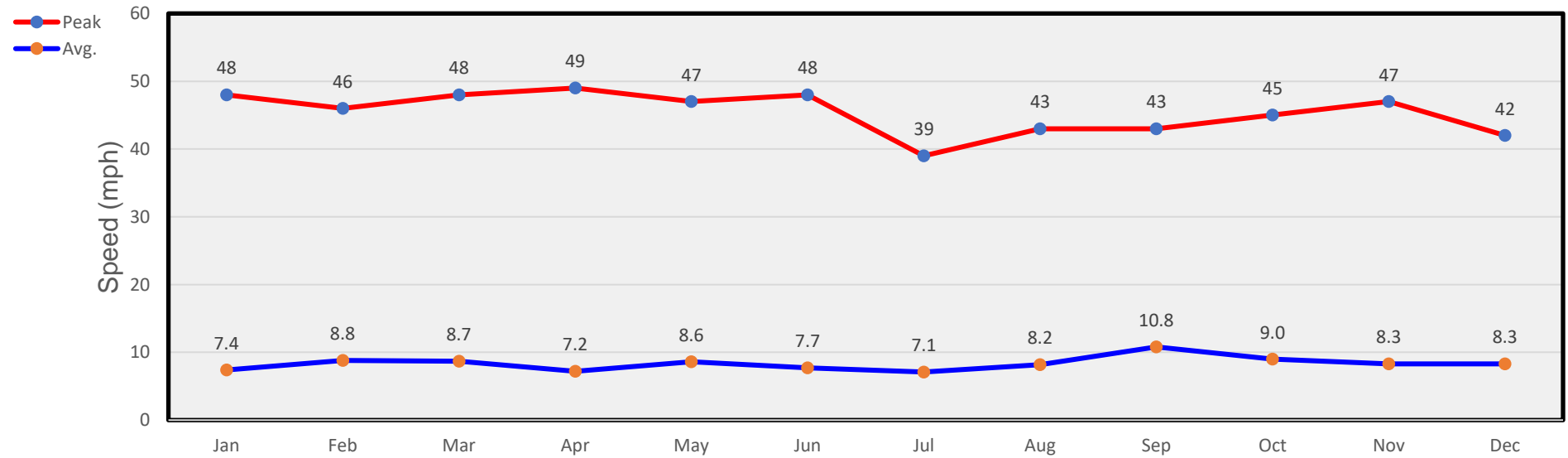
Monthly Snow



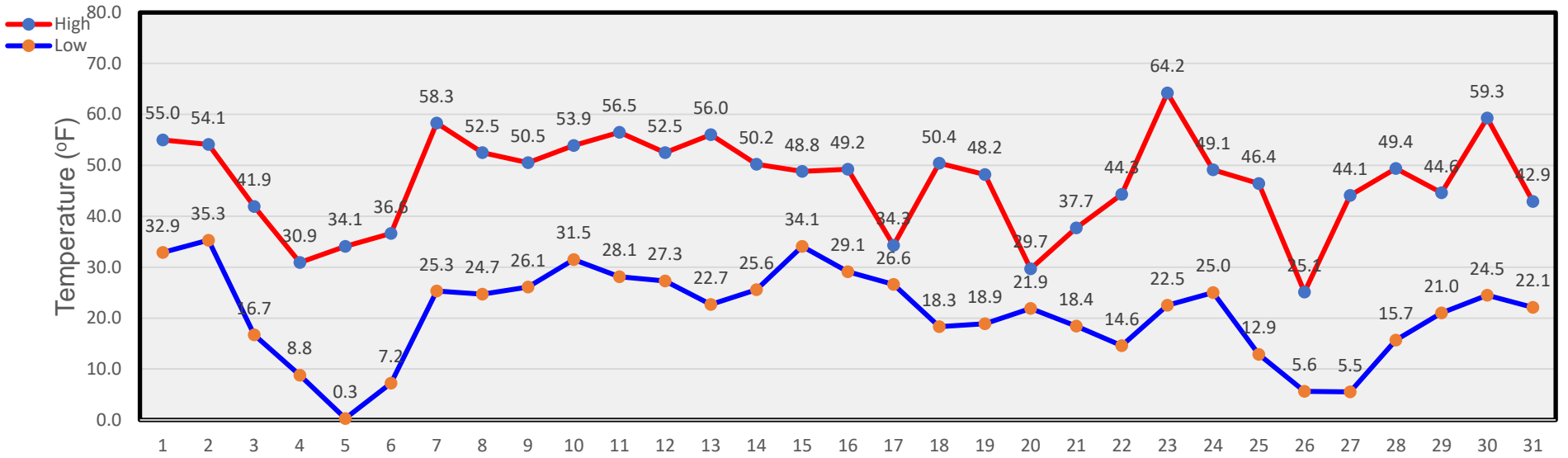
Monthly Temperatures



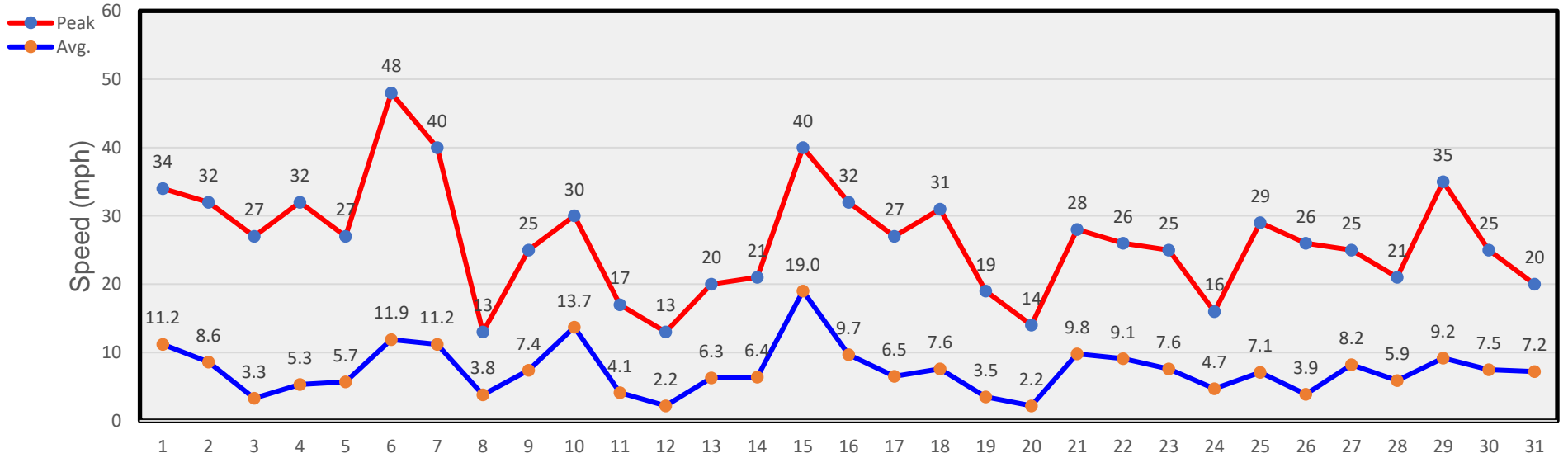
Monthly Winds



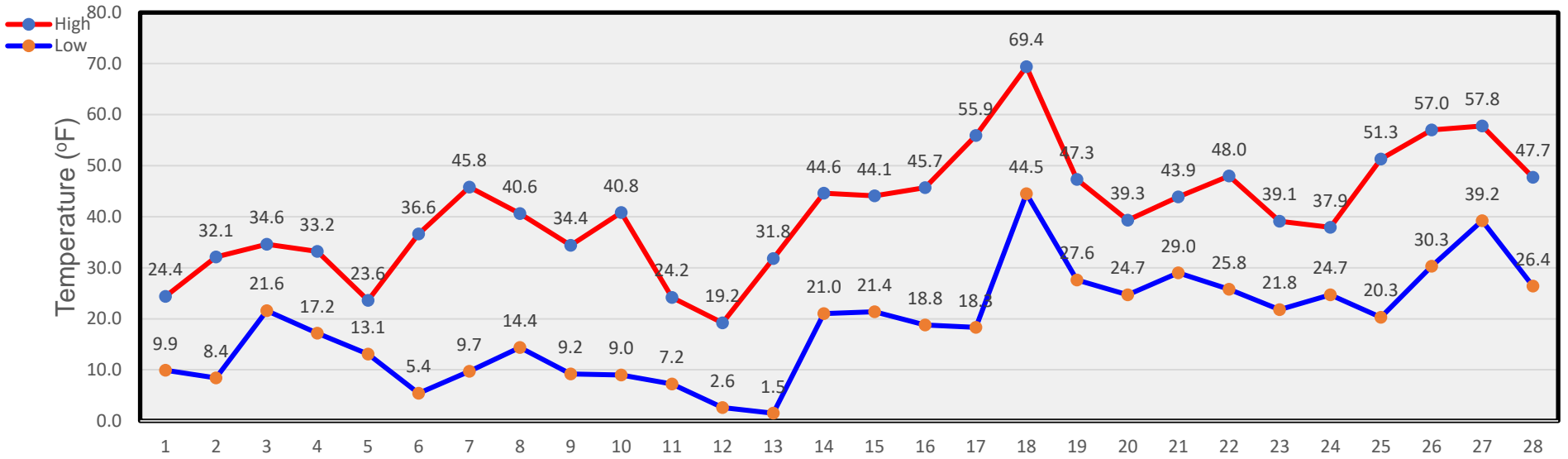
January Temperatures



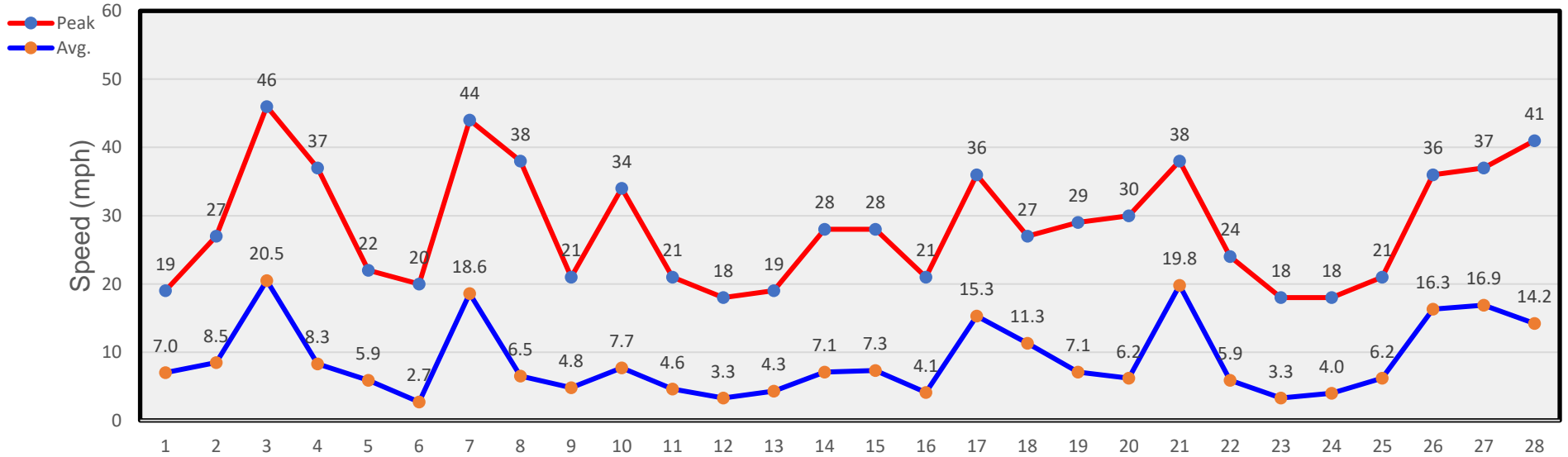
January Winds



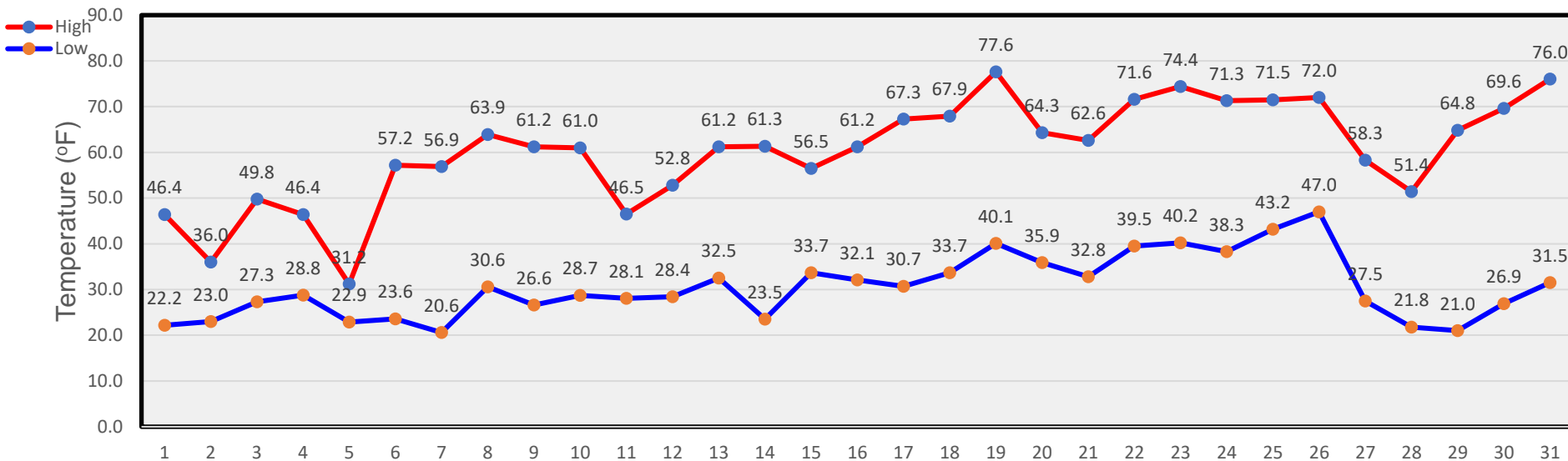
February Temperatures



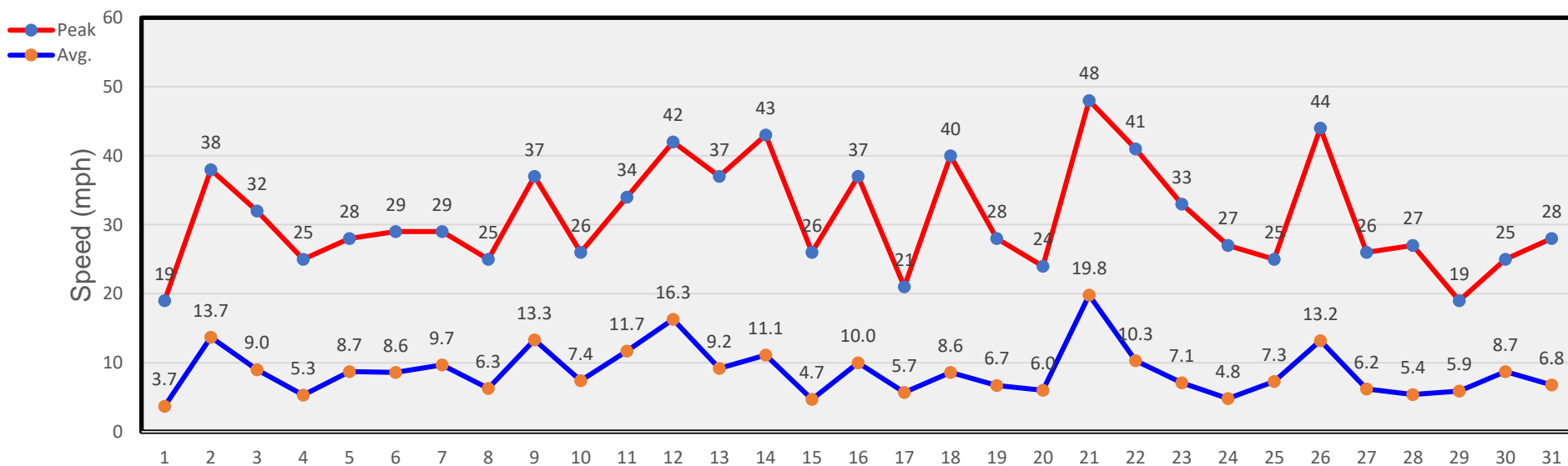
February Winds



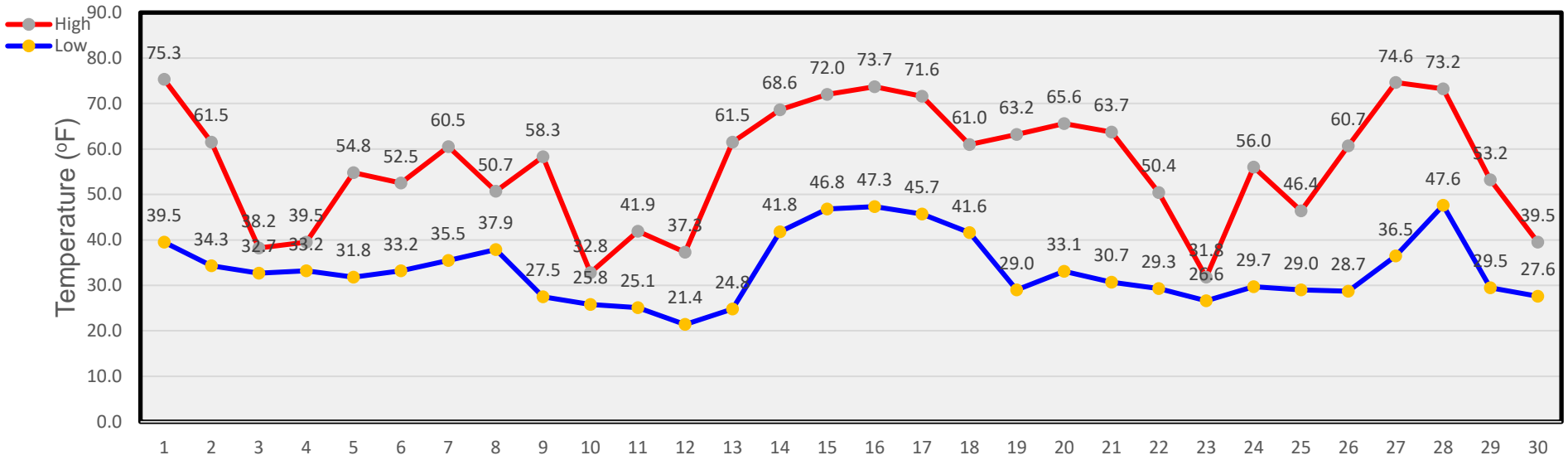
March Temperatures



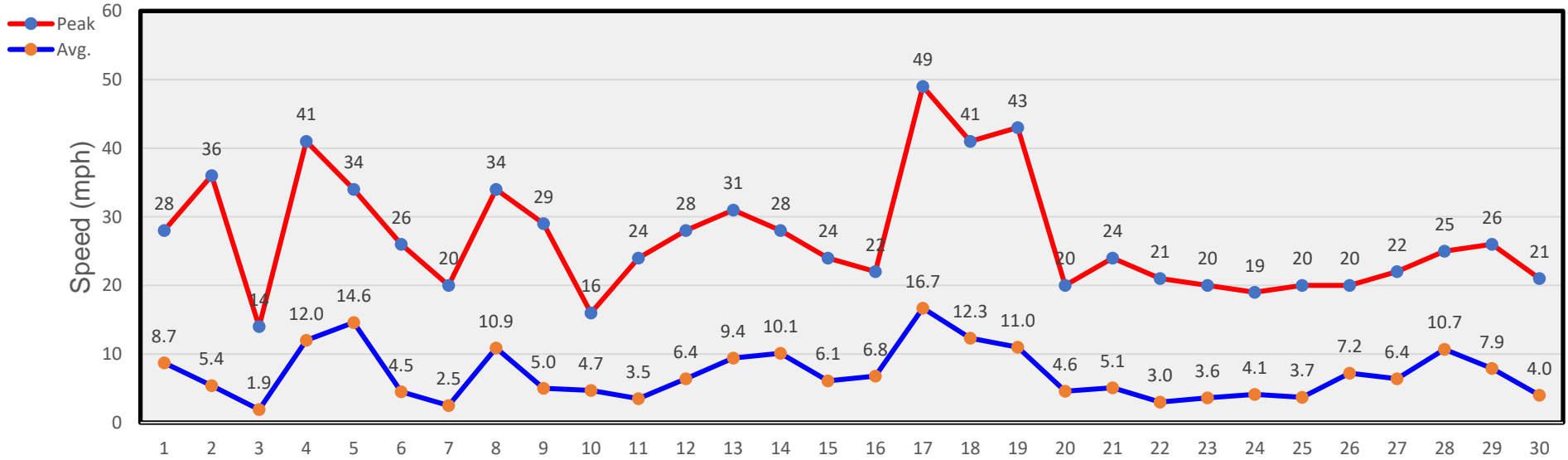
March Winds



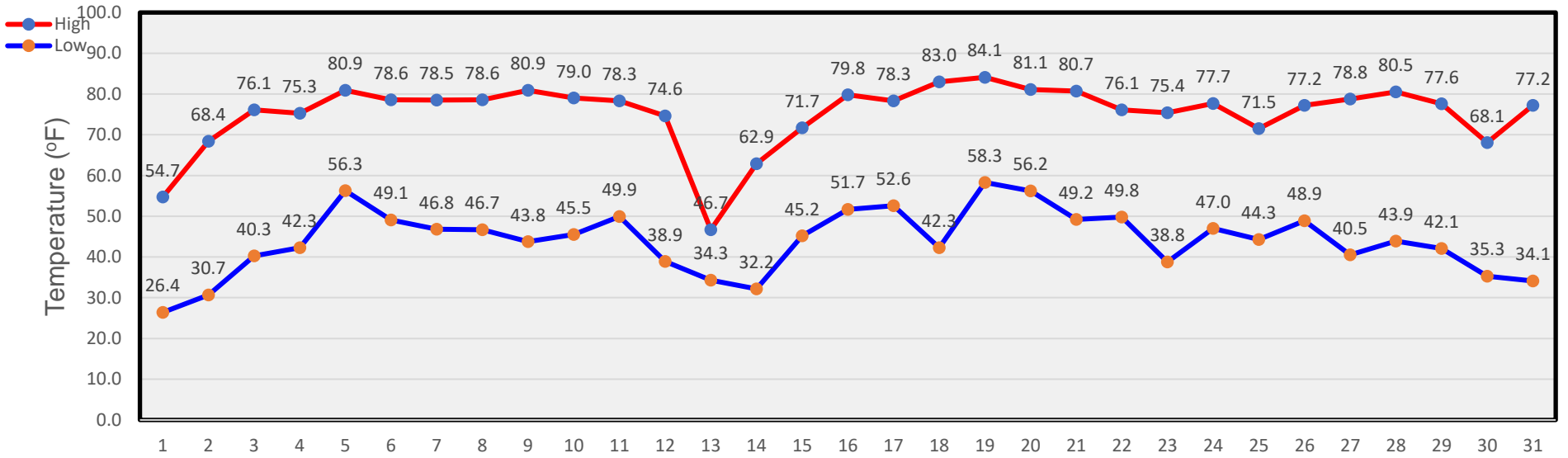
April Temperatures



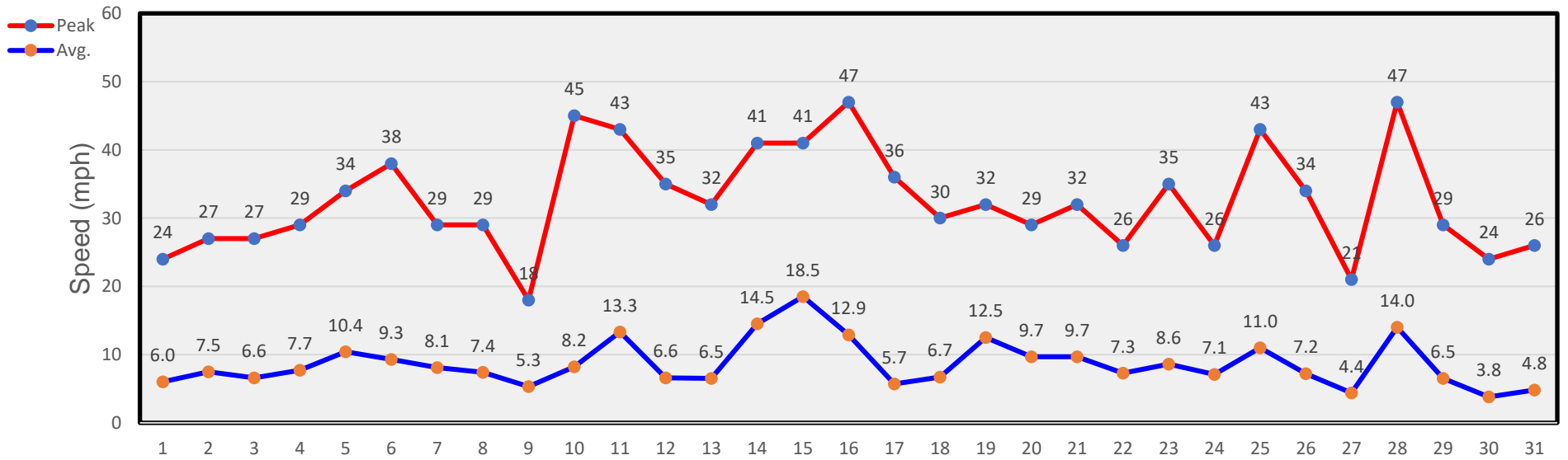
April Winds



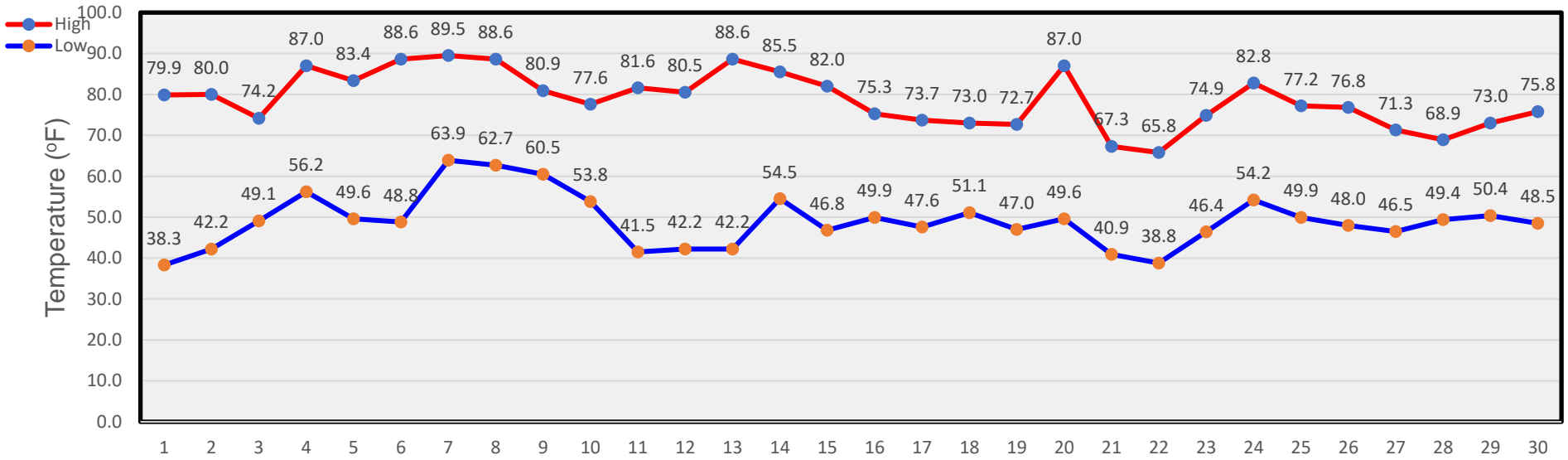
May Temperatures



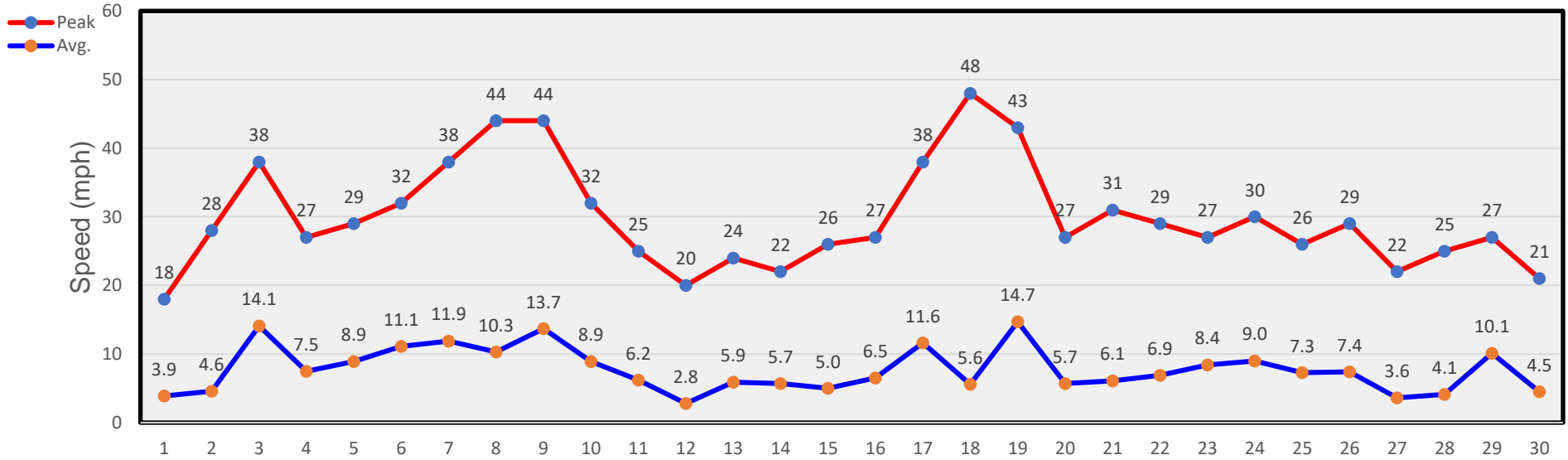
May Winds



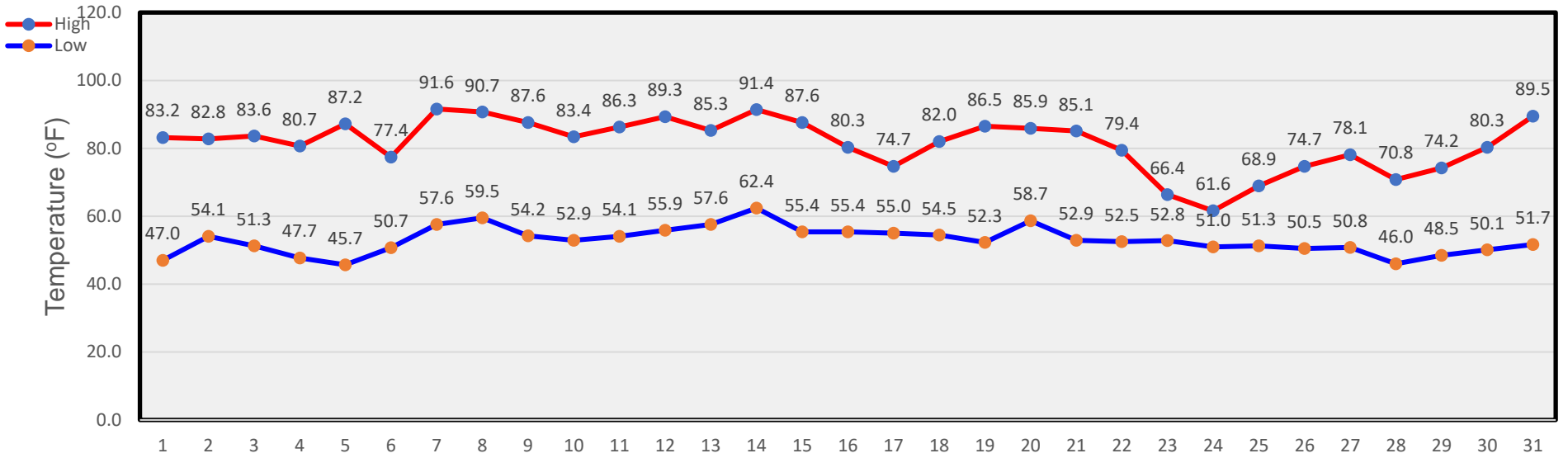
June Temperatures



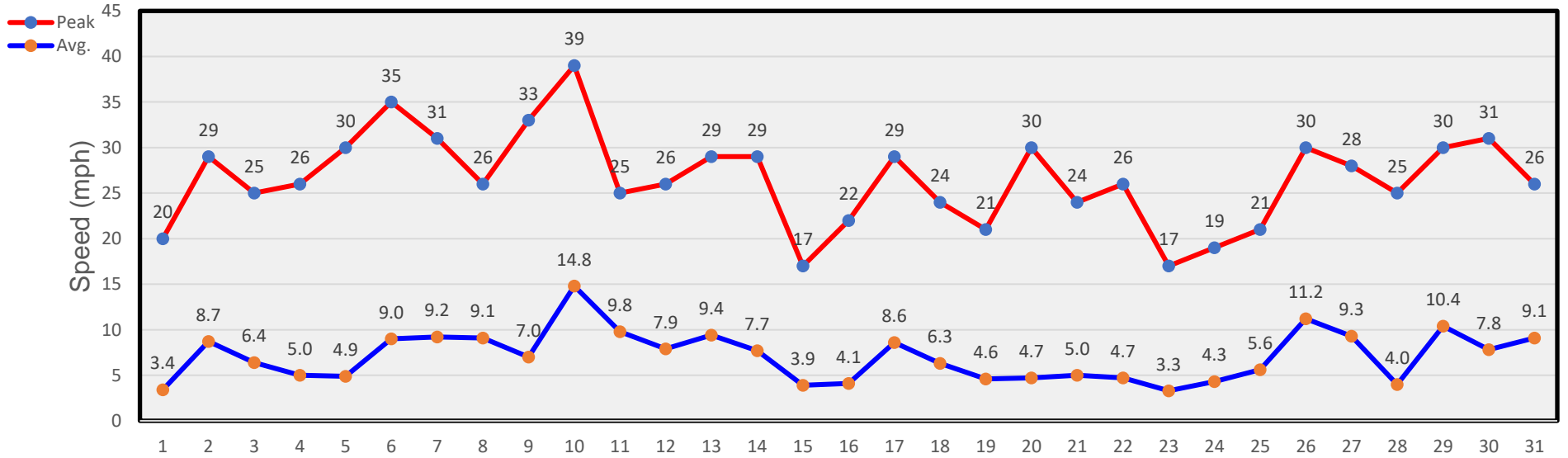
June Winds



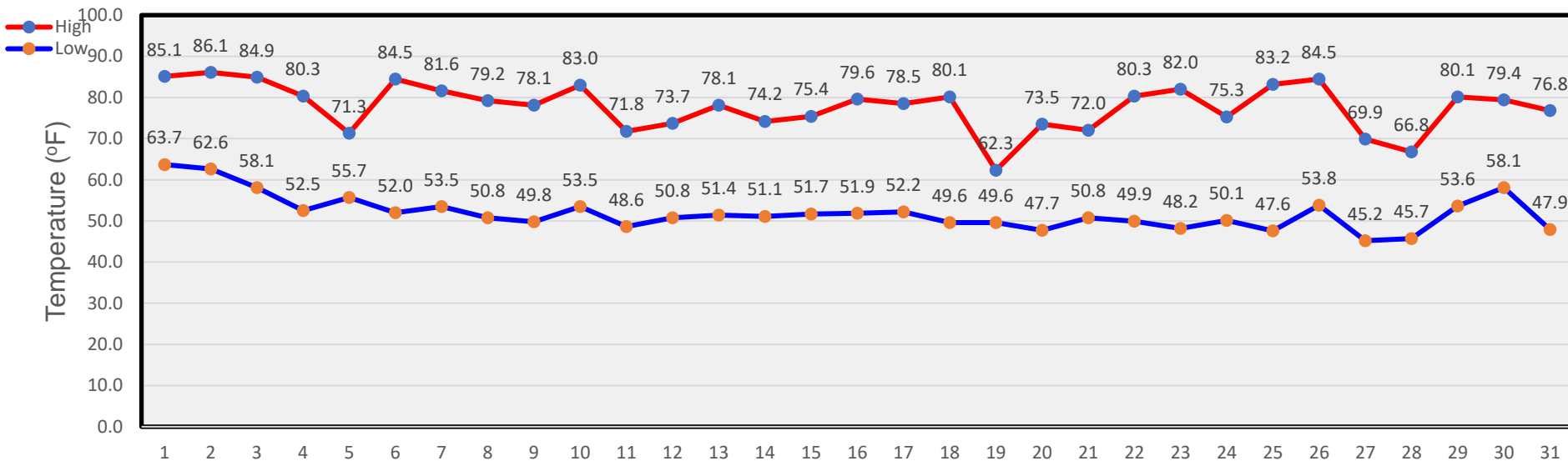
July Temperatures



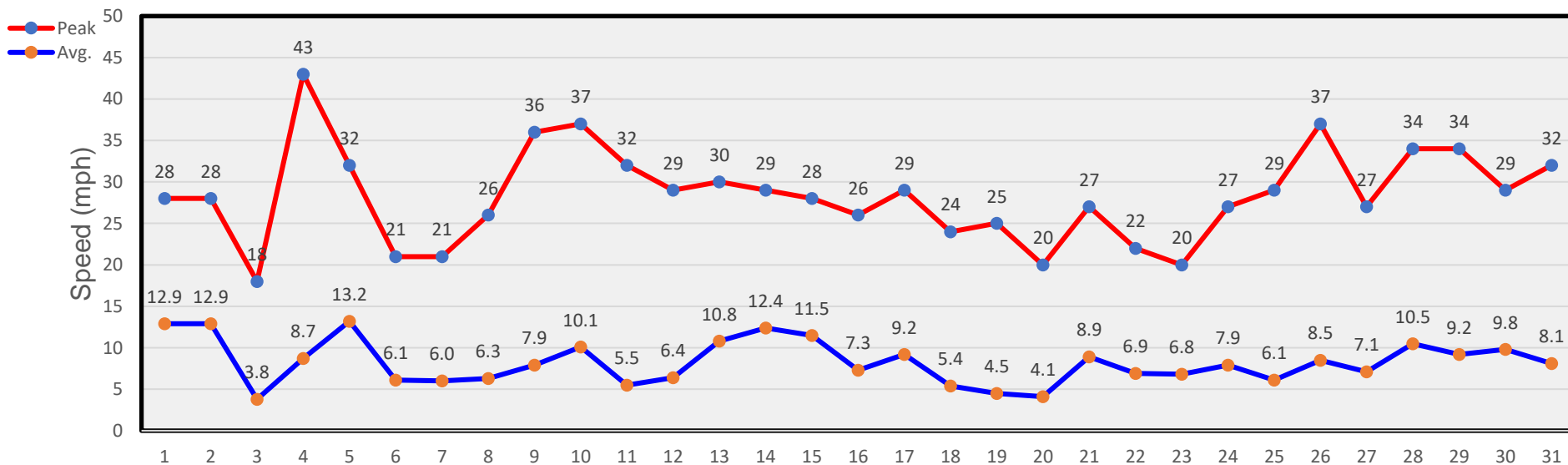
July Winds



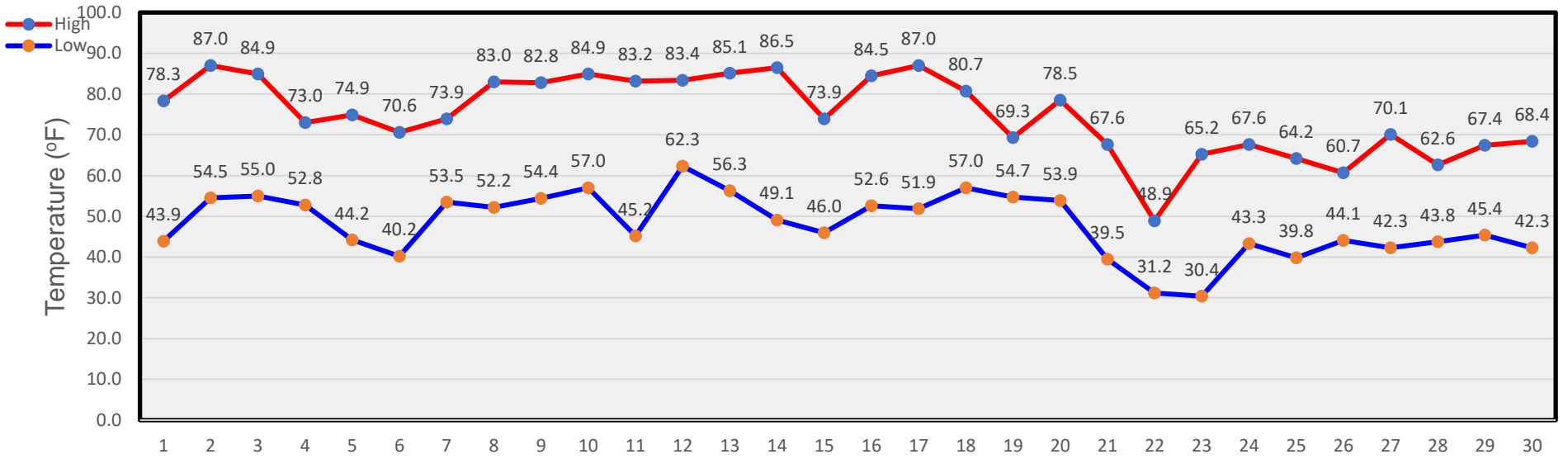
August Temperatures



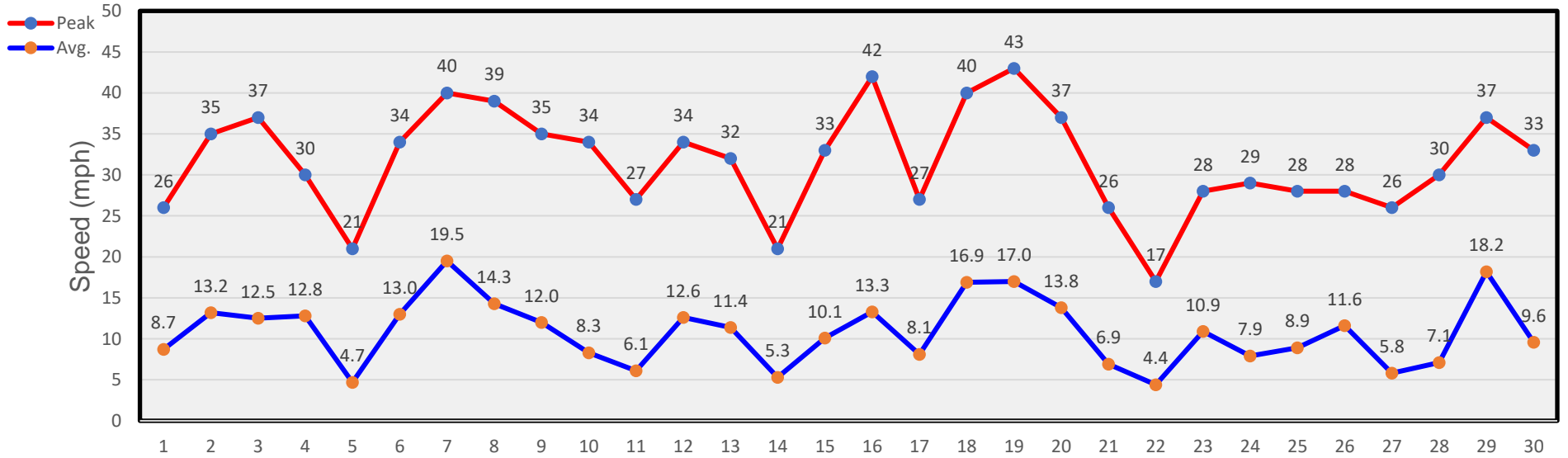
August Winds



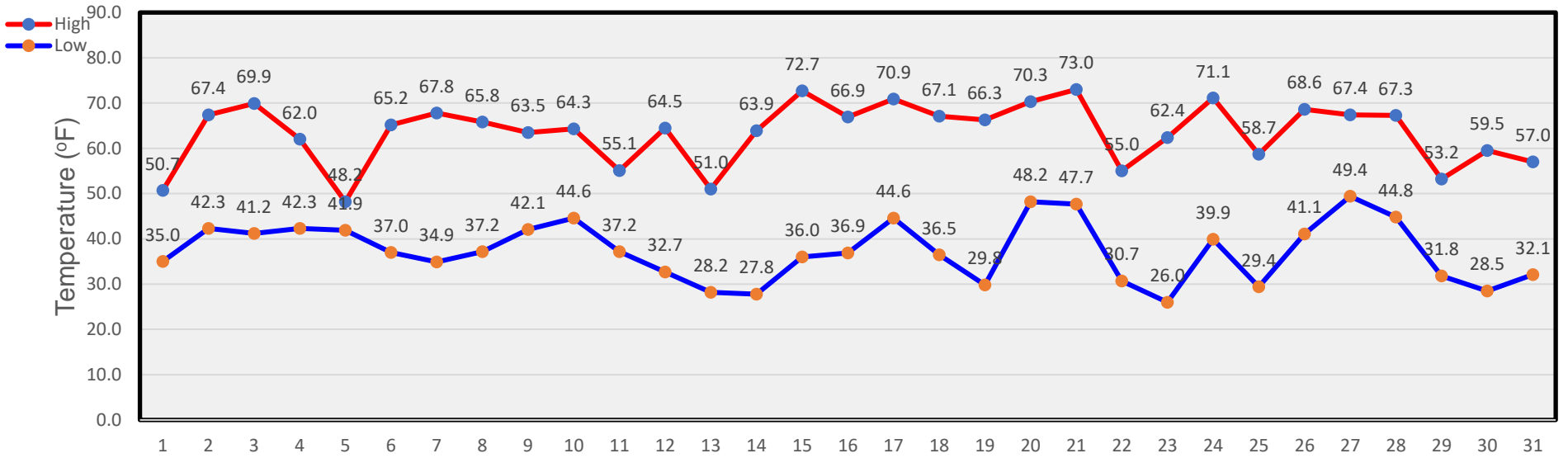
September Temperatures



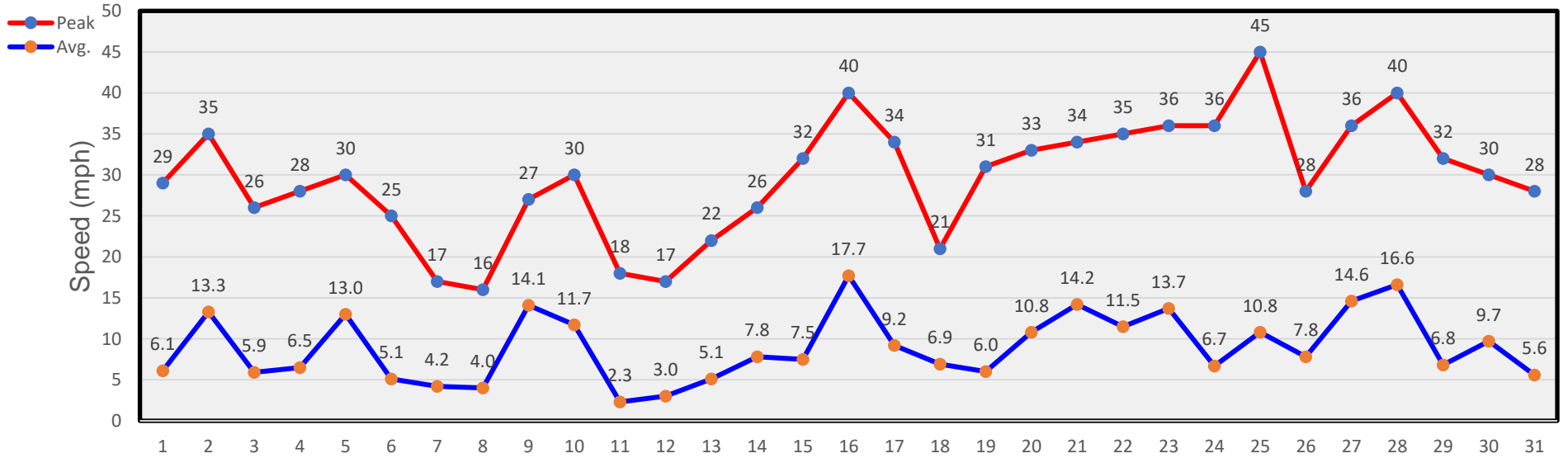
September Winds



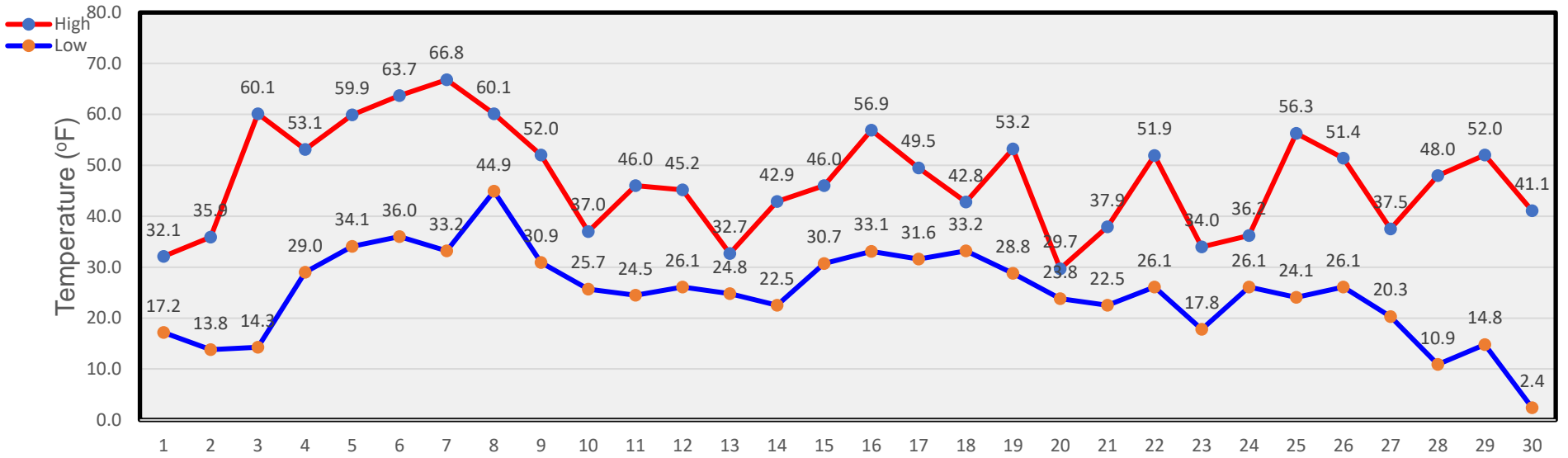
October Temperatures



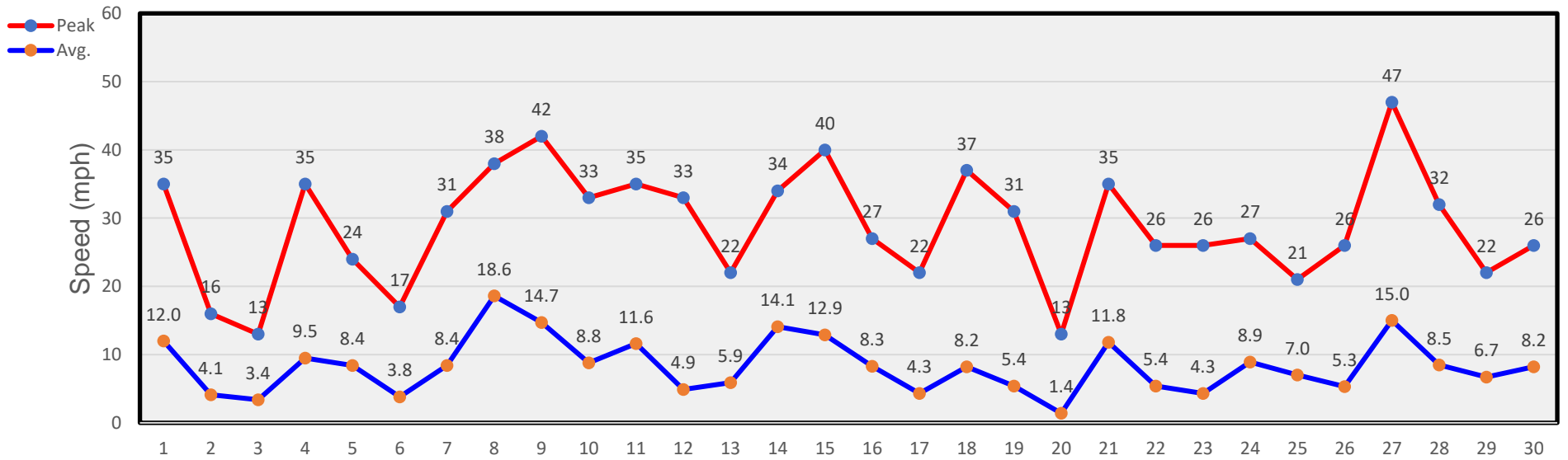
October Winds



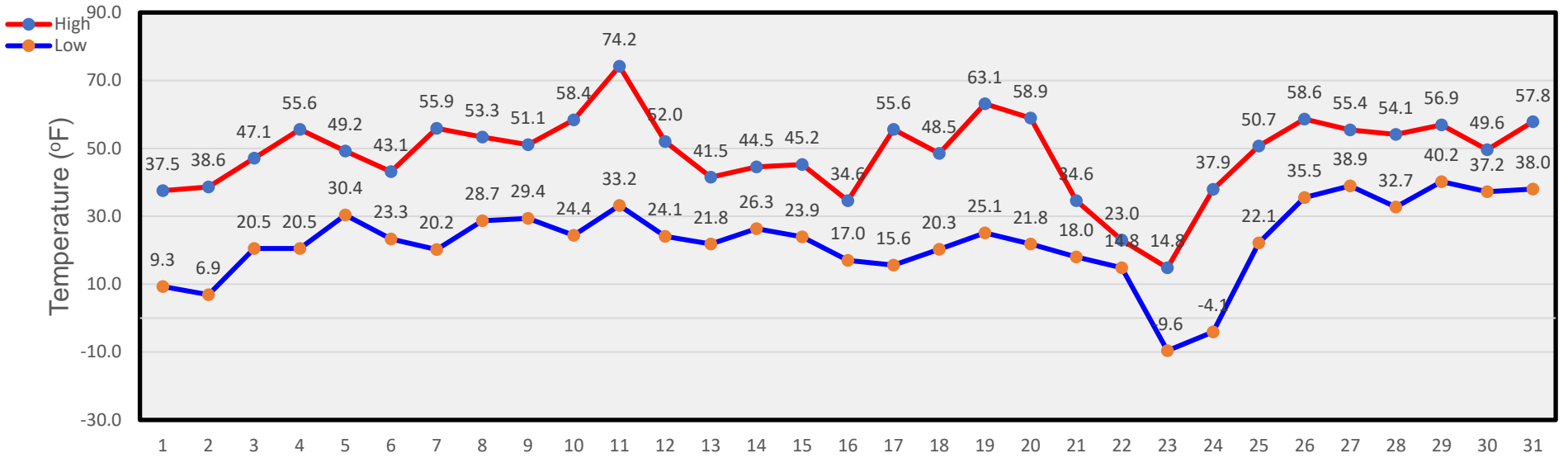
November Temperatures



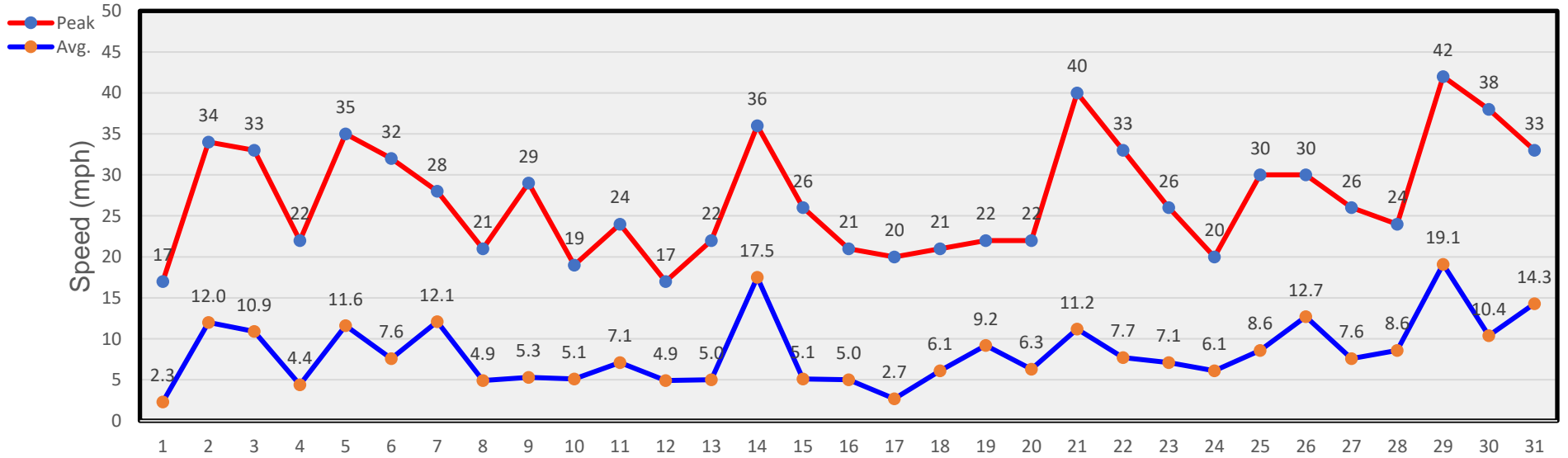
November Winds



December Temperatures



December Winds



Tables

January

Day	Mean Temp.	High Temp.	High Temp. Time	Low Temp.	Low Temp. Time	Heat Degree Days	Cool Degree Days	Precip.	Average Wind Speed	Peak Wind Speed	Peak Wind Time	Wind Dominant Direction
1	42.9	55.0	2:00p	32.9	2:45a	21.0			11.2	34	11:45p	S
2	45.5	54.1	1:00p	35.3	12:00m	20.3			8.6	32	12:00p	SW
3	25.4	41.9	3:00p	16.7	7:45a	35.7			3.3	27	2:45p	NNW
4	22.0	30.9	2:00p	8.8	7:45a	45.1			5.3	32	11:15p	N
5	16.5	34.1	1:30p	0.3	11:30p	47.8			5.7	27	12:45a	SSE
6	21.7	36.6	1:30p	7.2	4:45a	43.1			11.9	48	2:30a	S
7	39.8	58.3	11:00a	25.3	2:00a	23.2			11.2	40	12:15a	SE
8	36.9	52.5	2:00p	24.7	5:15a	26.4			3.8	13	10:00a	E
9	38.5	50.5	9:15a	26.1	12:45a	26.7			7.4	25	11:15p	S
10	42.5	53.9	11:45a	31.5	12:00m	22.3			13.7	30	2:45p	S
11	40.8	56.5	11:15a	28.1	6:30a	22.7			4.1	17	12:45a	NNW
12	37.4	52.5	12:45p	27.3	2:30a	25.1			2.2	13	1:30p	ESE
13	39.2	56.0	2:00p	22.7	6:45a	25.7			6.3	20	9:00p	SSE
14	38.4	50.2	2:00p	25.6	3:30a	27.1			6.4	21	5:30p	S
15	38.9	48.8	1:15p	34.1	10:45p	23.6			19.0	40	11:00a	S
16	38.1	49.2	11:45a	29.1	7:00a	25.8			9.7	32	6:00p	N
17	30.1	34.3	1:15p	26.6	11:00p	34.5			6.5	27	1:30a	NNW
18	34.3	50.4	1:15p	18.3	7:00a	30.7			7.6	31	9:30p	S
19	32.4	48.2	12:15p	18.9	4:30a	31.5			3.5	19	12:15a	S
20	25.9	29.7	2:00p	21.9	12:00m	39.2		0.05	2.2	14	3:00p	NNW
21	25.9	37.7	1:30p	18.4	11:15p	37.0			9.8	28	4:00p	SSE
22	28.5	44.3	12:00p	14.6	3:15a	35.5			9.1	26	11:15a	S
23	40.6	64.2	1:00p	22.5	6:00a	21.7			7.6	25	2:30a	S
24	35.7	49.1	11:00a	25.0	5:45a	28.0			4.7	16	3:00p	NNW
25	29.3	46.4	1:45p	12.9	12:00m	35.3		0.14	7.1	29	8:30p	SE
26	15.2	25.1	1:15p	5.6	9:00p	49.6			3.9	26	10:45a	NNW
27	27.0	44.1	12:00p	5.5	4:15a	40.2			8.2	25	6:00p	SE
28	31.8	49.4	1:00p	15.7	2:45a	32.5			5.9	21	7:00p	ESE
29	33.7	44.6	12:30p	21.0	4:45a	32.2			9.2	35	8:30p	NNW
30	40.3	59.3	11:30p	24.5	4:00a	23.1			7.5	25	12:15p	SE
31	32.2	42.9	9:45a	22.1	12:00m	32.5		0.22	7.2	20	9:30p	N
--	33.1 ¹	64.2 ³	23 ^d	0.3 ³	5 ^h	965.1 ²	2	0.41 ²	7.4 ¹	48 ³	6 ^h	S

Footnotes: 1. Average; 2. Sum (total); 3. Max or Min
 Heat Base: 65.0 Cool Base: 65.0
 Method: (High + Low) / 2 (per ¼ hour)

- 16th: Skiff of snow last night.
- 20th: About ½" of snow yesterday and last night.
- 26th: About 3" of snow last night.
- 31st: 3.5" of snow last night

February

Day	Mean Temp.	High Temp.	High Temp. Time	Low Temp.	Low Temp. Time	Heat Degree Days	Cool Degree Days	Precip.	Average Wind Speed	Peak Wind Speed	Peak Wind Time	Wind Dominant Direction
1	19.4	24.4	11:30a	9.9	12:00m	47.9		0.05	7.0	19	6:15p	NNW
2	22.4	32.1	1:15p	8.4	2:45a	44.8			8.5	27	11:15p	SE
3	27.6	34.6	12:00p	21.6	1:30a	36.9		0.02	20.5	46	8:30p	SSE
4	25.7	33.2	12:00p	17.2	10:00p	39.8		0.03	8.3	37	12:15a	S
5	19.4	23.6	2:00p	13.1	12:00m	46.6		0.04	5.9	22	11:00a	NNW
6	20.3	36.6	12:30p	5.4	6:45a	44.0			2.7	20	1:00p	N
7	31.8	45.8	11:00a	9.7	4:15a	37.3			18.6	44	6:30p	SSE
8	29.6	40.6	1:15p	14.4	11:45p	37.5			6.5	38	12:30a	SE
9	24.3	34.4	1:30p	9.2	2:30a	43.2			4.8	21	3:30a	N
10	26.2	40.8	1:45p	9.0	4:45a	40.1			7.7	34	10:15a	S
11	15.5	24.2	11:30a	7.2	6:00a	49.3		0.20	4.6	21	3:30p	NNW
12	11.0	19.2	1:30p	2.6	7:30a	54.1			3.3	18	9:00p	SSE
13	19.9	31.8	11:45a	1.5	1:00a	48.4			4.3	19	2:30p	N
14	34.1	44.6	1:00p	21.0	5:15a	32.2			7.1	28	9:45p	N
15	33.9	44.1	10:30a	21.4	10:30p	32.3			7.3	28	12:45a	SSE
16	33.9	45.7	12:45p	18.8	12:00m	32.8			4.1	21	12:15a	N
17	42.2	55.9	2:00p	18.3	1:00a	27.9			15.3	36	5:00a	S
18	54.2	69.4	12:45p	44.5	5:00a	8.0			11.3	27	6:45a	SSE
19	37.9	47.3	8:45a	27.6	12:00m	27.5		0.35	7.1	29	2:00p	N
20	31.3	39.3	2:00p	24.7	6:00a	33.0			6.2	30	12:00m	NNW
21	35.6	43.9	12:30p	29.0	6:00a	28.5			19.8	38	8:00a	S
22	37.2	48.0	11:15a	25.8	11:45p	28.1			5.9	24	12:15a	S
23	30.5	39.1	12:45p	21.8	4:30a	34.6		0.20	3.3	18	12:45p	NNW
24	29.2	37.9	12:45p	24.7	5:45a	33.7			4.0	18	8:30p	SSE
25	36.6	51.3	2:00p	20.3	6:15a	29.2			6.2	21	10:00p	S
26	42.6	57.0	11:30a	30.3	1:30a	21.3			16.3	36	9:45p	S
27	45.9	57.8	10:15a	39.2	12:00m	16.5			16.9	37	1:00p	S
28	36.6	47.7	1:00p	26.4	12:00m	28.0			14.2	41	11:15a	S
29	30.6	39.3	11:00a	17.2	4:45a	36.8			6.5	28	1:45p	WNW
--	30.5 ¹	69.4 ³	18 th	18.6 ³		1,020.1 ²	²	0.89 ²	8.8 ¹	46 ³	3 rd	S

Footnotes: 1. Average; 2. Sum (total); 3. Max or Min
 Heat Base: 65.0 Cool Base: 65.0
 Method: (High + Low) / 2 (per ¼ hour)

- 1st: About 0.7" snow.
- 3rd: About 0.5" snow
- 4th: About 0.5" snow.
- 5th: About 0.5" snow
- 11th: 5" snow yesterday pm.
- 20th: 4" snow last night.
- 23rd: 3" snow yesterday pm.

March

Day	Mean Temp.	High Temp.	High Temp. Time	Low Temp.	Low Temp. Time	Heat Degree Days	Cool Degree Days	Precip.	Average Wind Speed	Peak Wind Speed	Peak Wind Time	Wind Dominant Direction
1	34.1	46.4	1:45p	22.2	6:00a	30.7		0.02	3.7	19	3:25p	N
2	28.0	36.0	12:45a	23.0	1:30a	35.5		0.01	13.7	38	6:45p	SSW
3	36.7	49.8	11:30a	27.3	12:15a	26.5		0.01	9.0	32	1:45a	SSE
4	35.2	46.4	9:15a	28.8	11:30p	27.4		0.35	5.3	25	12:45p	S
5	26.1	31.2	1:45p	22.9	6:00a	38.0			8.7	28	8:45p	N
6	39.6	57.2	3:15p	23.6	3:45a	24.6			8.6	29	12:45a	WNW
7	39.5	56.9	2:15p	20.6	5:15a	26.3			9.7	29	9:30p	SSE
8	49.2	63.9	11:30a	30.6	12:00m	17.8			6.3	25	11:45a	N
9	45.2	61.2	3:00p	26.6	3:30a	21.1			13.3	37	10:00a	S
10	47.0	61.0	12:45p	28.7	12:00m	20.2			7.4	26	12:15a	SSE
11	35.5	46.5	1:30p	28.1	3:30a	27.7			11.7	34	8:45p	S
12	39.6	52.8	12:00p	28.4	5:30a	24.4			16.3	42	10:15p	SSE
13	45.6	61.2	10:45a	32.5	12:00m	18.2			9.2	37	12:15a	N
14	43.3	61.3	3:15p	23.5	5:30a	22.6			11.1	43	9:30a	SSE
15	44.9	56.5	12:15p	33.7	10:00p	19.9			4.7	26	11:00p	N
16	46.0	61.2	1:30p	32.1	5:30a	18.3			10.0	37	3:00a	S
17	50.8	67.3	2:12p	30.7	6:00a	16.0			5.7	21	3:45a	ESE
18	51.9	67.9	2:30p	33.7	2:00a	14.2			8.6	40	6:45p	S
19	58.4	77.6	12:30p	40.1	5:30a	6.2			6.7	28	1:00a	ESE
20	50.1	64.3	3:15p	35.9	9:16p	14.9			6.0	24	9:15a	NNW
21	47.5	62.6	2:45p	32.8	5:15a	17.3			19.8	48	7:30a	S
22	56.2	71.6	11:45a	39.5	5:30a	9.5			10.3	41	9:45p	ESE
23	56.7	74.4	11:45a	40.2	5:45a	7.7			7.1	33	12:15a	S
24	54.1	71.3	1:15p	38.3	11:15p	10.2			4.8	27	12:45p	N
25	57.8	71.5	3:30p	43.2	1:15a	7.7			7.3	25	12:45p	SSE
26	59.7	72.0	12:15p	47.0	12:00m	5.5			13.2	44	3:15p	SSE
27	43.5	58.3	1:45p	27.5	11:30p	22.1		0.02	6.2	26	9:00a	WNW
28	36.2	51.4	3:15p	21.8	5:00a	28.4			5.4	27	5:45p	N
29	44.3	64.8	12:30p	21.0	5:00a	22.1			5.9	19	12:15a	ESE
30	50.4	69.6	3:45p	26.9	4:15a	16.8			8.7	25	8:00p	S
31	55.8	76.0	12:15p	31.5	4:15a	11.3			6.8	28	11:00p	S
--	45.4 ¹	77.6 ³	19 th	20.6 ³	7 th	608.6 ²	²	0.41 ²	8.7 ¹	48 ³	21 st	S

Footnotes: 1. Average; 2. Sum (total); 3. Max or Min
 Heat Base: 65.0 Cool Base: 65.0
 Method: (High + Low) / 2 (per ¼ hour)

- 1st: 0.5" snow
- 2nd: 0.2" snow
- 4th: 1.5" snow

April

Day	Mean Temp.	High Temp.	High Temp. Time	Low Temp.	Low Temp. Time	Heat Degree Days	Cool Degree Days	Precip.	Average Wind Speed	Peak Wind Speed	Peak Wind Time	Wind Dominant Direction
1	58.5	75.3	1:30p	39.5	3:00a	7.6			8.7	28	8:30p	SSE
2	47.1	61.5	9:15a	34.3	12:00m	17.1		0.60	5.4	36	1:45p	NNW
3	35.1	38.2	6:30a	32.7	4:30p	29.5		0.50	1.9	14	1:00p	N
4	35.4	39.5	3:45p	33.2	10:00p	28.7		0.02	12.0	41	9:00p	S
5	41.3	54.8	12:30p	31.8	5:00a	21.7			14.6	34	1:45a	S
6	42.4	52.5	11:12a	33.2	2:00a	22.2		0.01	4.5	26	11:15a	N
7	46.5	60.5	12:30p	35.5	6:45a	17.0		0.04	2.5	20	1:45p	N
8	42.9	50.7	3:45p	37.9	11:45p	20.7		0.02	10.9	34	12:45p	SSE
9	39.6	58.3	12:00p	27.5	11:30p	22.1		0.68	5.0	29	3:15p	NNE
10	28.2	32.8	2:30p	25.8	3:15a	35.7		0.30	4.7	16	8:15p	NNW
11	32.2	41.9	12:15p	25.1	5:45a	31.5		0.01	3.5	24	11:15p	NNW
12	29.3	37.3	3:30p	21.4	7:45a	35.7			6.4	28	3:00a	NNW
13	45.3	61.5	2:00p	24.8	6:00a	21.8			9.4	31	7:00p	S
14	54.8	68.6	1:00p	41.8	2:00a	9.8			10.1	28	12:15a	SSE
15	59.2	72.0	1:45p	46.8	6:45a	5.6			6.1	24	1:00p	SSE
16	59.6	73.7	2:15p	47.3	3:00a	4.5			6.8	22	11:30a	S
17	56.5	71.6	2:15p	45.7	5:00a	6.3			16.7	49	3:30p	SSE
18	53.1	61.0	4:00p	41.6	10:45a	13.7			12.3	41	9:45a	S
19	50.9	63.2	3:15p	29.0	6:15a	18.9			11.0	43	4:15p	S
20	50.1	65.6	1:15p	33.1	5:00a	15.7			4.6	20	2:00p	WNW
21	46.9	63.7	1:00p	30.7	6:15a	17.8			5.1	24	2:45p	WNW
22	36.9	50.4	12:30p	29.3	12:00m	25.2		2.30	3.0	21	10:30a	NW
23	29.2	31.8	3:30p	26.6	6:00a	35.8		0.92				NW
24	40.2	56.0	4:15p	29.7	12:15a	22.2			4.1	19	9:30a	SSE
25	38.3	46.4	9:00a	29.0	5:30a	27.3		0.03	3.7	20	12:45p	NNW
26	49.5	60.7	4:45p	28.7	1:30a	20.3			7.2	20	8:30p	SSE
27	58.0	74.6	3:45p	36.5	5:45a	9.5			6.4	22	12:15a	S
28	59.1	73.2	12:45p	47.6	5:45a	4.6			10.7	25	1:00a	SSE
29	38.7	53.2	1:15a	29.5	12:00m	23.7		0.58	7.9	26	4:15a	NNW
30	31.8	39.5	2:15p	27.6	4:15a	31.5		0.10	4.0	21	10:00p	N
--	44.6 ¹	75.3 ³	1 st	21.4 ³	12 th	603.4 ²	²	6.11 ²	7.2 ¹	49 ³	17 th	SSE

Footnotes: 1. Average; 2. Sum (total); 3. Max or Min
 Heat Base: 65.0 Cool Base: 65.0
 Method: (High + Low) / 2 (per ¼ hour)

- 4th: Very welcome precip. over the last three days. A slow steady rain with a slight mixture of snow.
- 10th: A very wet 5.5" snow yesterday.
- 11th: Another 4" of snow over the last 24 hrs.
- 23rd: 17" of snow yesterday pm and today at 7:30am...and STILL SNOWING. 2.3" of precip. so far. 24" of snow on our deck.
- 24th: Another 7" of snow in the last 24hrs. Lots of broken Ponderosas branches on the ground. I hear there have been/still are power outages and lost phone service on the Ranch.
- 30th: 5.5" snow last night (very wet).

May

Day	Mean Temp.	High Temp.	High Temp. Time	Low Temp.	Low Temp. Time	Heat Degree Days	Cool Degree Days	Precip.	Average Wind Speed	Peak Wind Speed	Peak Wind Time	Wind Dominant Direction
1	40.0	54.7	4:45p	26.4	5:00a	24.5			6.0	24	1:00a	NNW
2	51.9	68.4	1:45p	30.7	4:00a	15.4			7.5	27	9:45p	SE
3	60.8	76.1	3:30p	40.3	5:45a	6.8			6.6	27	12:15a	SSE
4	61.5	75.3	2:15p	42.3	4:30a	6.2			7.7	29	12:00m	SE
5	67.1	80.9	11:00a	56.3	5:15a		3.6		10.4	34	12:15p	SSE
6	65.3	78.6	10:00a	49.1	5:45a	1.2			9.3	38	1:30p	S
7	64.4	78.5	4:00p	46.8	5:45a	2.3			8.1	29	11:45a	SSE
8	64.6	78.6	2:30p	46.7	5:00a	2.3			7.4	29	12:45a	SSE
9	64.8	80.9	2:00p	43.8	5:45a	2.7			5.3	18	6:45p	ESE
10	64.1	79.0	3:30p	45.5	5:30a	2.8			8.2	45	11:00p	ESE
11	63.9	78.3	3:45p	49.9	4:45a	0.9			13.3	43	1:45a	SSW
12	57.5	74.6	2:30p	38.9	12:00m	8.3			6.6	35	1:00p	SSW
13	38.6	46.7	3:30p	34.3	5:15a	24.5		0.03	6.5	32	12:45a	NNW
14	48.4	62.9	3:45p	32.2	3:15a	17.4			14.5	41	4:15p	SE
15	56.8	71.7	4:30p	45.2	4:45a	6.6			18.5	41	6:00a	SSE
16	65.0	79.8	2:15p	51.7	4:45a		0.8		12.9	47	12:15a	SSE
17	63.5	78.3	4:00p	52.6	6:45a		0.4		5.7	36	4:15a	SSE
18	66.4	83.0	4:15p	42.3	4:15a	2.3			6.7	30	11:30a	SSE
19	70.9	84.1	3:15p	58.3	4:15a		6.2		12.5	32	6:45p	SSE
20	66.7	81.1	3:15p	56.2	6:15a		3.7		9.7	29	12:45a	S
21	66.0	80.7	2:45p	49.2	11:30p	0.1			9.7	32	2:00p	SSE
22	63.7	76.1	2:15p	49.8	12:15a	2.1			7.3	26	3:30p	SSE
23	60.0	75.4	1:15p	38.8	5:30a	7.9			8.6	35	12:45p	SSE
24	63.5	77.7	2:15p	47.0	12:00m	2.7			7.1	26	12:45a	S
25	56.3	71.5	4:00p	44.3	5:15a	7.1			11.0	43	2:00p	SSE
26	64.1	77.2	3:15p	48.9	12:00m	2.0			7.2	34	2:15p	W
27	61.9	78.8	3:45p	40.5	4:15a	5.3			4.4	21	12:15p	E
28	66.2	80.5	2:15p	43.9	4:00a	2.8			14.0	47	5:00p	SSE
29	63.5	77.6	1:30p	42.1	12:00m	5.2			6.5	29	4:30p	W
30	51.7	68.1	2:15p	35.3	4:00a	13.3		0.02	3.8	24	12:30p	WNW
31	58.6	77.2	4:45p	34.1	1:00a	9.4			4.8	26	3:15p	WNW
--	60.6 ¹	84.1 ³	19 th	26.4 ³	1 st	181.8 ²	14.6 ²	0.05 ²	8.6 ¹	47 ³	16 th	SSE

Footnotes: 1. Average; 2. Sum (total); 3. Max or Min
 Heat Base: 65.0 Cool Base: 65.0
 Method: (High + Low) / 2 (per ¼ hour)

June

Day	Mean Temp.	High Temp.	High Temp. Time	Low Temp.	Low Temp. Time	Heat Degree Days	Cool Degree Days	Precip.	Average Wind Speed	Peak Wind Speed	Peak Wind Time	Wind Dominant Direction
1	60.6	79.9	2:45p	38.3	4:15a	5.9			3.9	18	2:00p	NNW
2	62.2	80.0	3:00p	42.2	5:15a	3.9			4.6	28	5:15p	N
3	62.0	74.2	12:30p	49.1	5:15a	3.4			14.1	38	4:15p	SSE
4	71.0	87.0	12:00p	56.2	12:45a		6.6		7.5	27	5:30a	SSE
5	65.1	83.4	11:30a	49.6	12:00m		1.5	0.02	8.9	29	1:00a	SSE
6	70.0	88.6	2:15p	48.8	12:30a		3.7		11.1	32	7:00a	SSE
7	75.3	89.5	10:45a	63.9	5:15p		11.7		11.9	38	5:30p	SSE
8	75.2	88.6	1:15p	62.7	5:15a		10.7		10.3	44	11:30p	SSE
9	67.1	80.9	1:15p	60.5	5:30a		5.7	0.02	13.7	44	4:30p	SSE
10	66.3	77.6	11:15a	53.8	5:00a		0.7		8.9	32	11:45a	SSE
11	64.1	81.6	2:45p	41.5	4:45a	3.5			6.2	25	12:00p	S
12	64.5	80.5	3:15p	42.2	5:45a	3.7			2.8	20	1:15a	ESE
13	68.4	88.6	2:45p	42.2	3:15a		0.4		5.9	24	9:45p	SE
14	69.4	85.5	1:15p	54.5	2:30a		5.0	0.04	5.7	22	1:30p	NNW
15	66.0	82.0	11:00a	46.8	5:15a	0.6		0.02	5.0	26	11:30p	SSE
16	60.2	75.3	12:15p	49.9	12:00m	2.4		0.08	6.5	27	11:15a	NNW
17	59.5	73.7	2:15p	47.6	5:00a	4.4		0.01	11.6	38	1:30p	SSE
18	58.7	73.0	2:15p	51.1	3:45a	3.0		0.03	5.6	48	2:45p	NNW
19	59.9	72.7	2:30p	47.0	4:30a	5.2		0.07	14.7	43	5:30p	SSE
20	67.1	87.0	4:30p	49.6	4:15a		3.3		5.7	27	5:00p	SSE
21	50.1	67.3	11:45a	40.9	12:00m	10.9		0.51	6.1	31	4:45p	NNW
22	52.8	65.8	4:30p	38.8	4:00a	12.7			6.9	29	4:45p	SSE
23	62.5	74.9	11:15a	46.4	5:00a	4.3			8.4	27	12:00m	SSE
24	65.8	82.8	12:00p	54.2	12:00m		3.5		9.0	30	2:00a	SSE
25	58.2	77.2	12:00p	49.9	8:45p	1.5		0.44	7.3	26	1:30p	SSE
26	56.9	76.8	12:00p	48.0	10:45p	2.6		0.13	7.4	29	3:15a	SSE
27	55.8	71.3	11:00a	46.5	4:15a	6.1		0.14	3.6	22	5:00p	NNW
28	56.7	68.9	2:00p	49.4	4:45a	5.8		0.33	4.1	25	7:00p	SSE
29	56.8	73.0	12:30a	50.4	1:15a	3.3		0.28	10.1	27	3:30a	SSE
30	58.5	75.8	3:00p	48.5	5:00a	2.8		0.14	4.5	21	10:30p	SSE
--	62.9 ¹	89.5 ³	6 th	38.3 ³	1 st	85.8 ²	52.7 ²	2.26 ²	7.7 ¹	48 ³	18 th	SSE

Footnotes: 1. Average; 2. Sum (total); 3. Max or Min
Heat Base: 65.0 Cool Base: 65.0
Method: (High + Low) / 2 (per ¼ hour)

July

Day	Mean Temp.	High Temp.	High Temp. Time	Low Temp.	Low Temp. Time	Heat Degree Days	Cool Degree Days	Precip.	Average Wind Speed	Peak Wind Speed	Peak Wind Time	Wind Dominant Direction
1	64.8	83.2	3:15p	47.0	5:30a		0.1		3.4	20	12:15a	NNW
2	69.2	82.8	1:30p	54.1	12:15a		3.4		8.7	29	4:15p	SSE
3	69.3	83.6	12:45p	51.3	4:30a		2.4		6.4	25	2:15p	SSE
4	64.8	80.7	11:00a	47.7	12:00m	0.8			5.0	26	2:15p	SSE
5	68.6	87.2	2:00p	45.7	4:30a		1.4		4.9	30	9:45p	N
6	62.6	77.4	1:45p	50.7	4:30a	0.9		0.02	9.0	35	9:45p	SSE
7	73.3	91.6	2:15p	57.6	5:15a		9.6		9.2	31	4:15a	SSE
8	74.9	90.7	1:45p	59.5	12:00m		10.1		9.1	26	4:30p	SSE
9	68.8	87.6	1:00p	54.2	3:45a		5.9	0.28	7.0	33	8:45p	N
10	62.6	83.4	11:15p	52.9	1:00p		3.2	0.92	14.8	39	12:45a	SSE
11	62.5	86.3	12:15p	54.1	1:15a		5.2		9.8	25	1:00p	SSE
12	73.4	89.3	1:15p	55.9	2:30a		7.6		7.9	26	10:15p	SSE
13	73.4	85.3	11:30a	57.6	5:15a		6.4		9.4	29	12:00m	SSE
14	75.8	91.4	2:15p	62.4	5:15a		11.9		7.7	29	12:15a	SSE
15	72.4	87.6	11:30a	55.4	5:45a		6.5	0.02	3.9	17	4:45p	ESE
16	63.4	80.3	12:15p	55.4	12:00m		2.9	1.05	4.1	22	4:30p	NNW
17	61.1	74.7	1:00p	55.0	12:15a	0.2		0.24	8.6	29	7:00a	SE
18	65.4	82.0	1:00p	54.5	5:00a		3.3	0.02	6.3	24	2:30a	S
19	67.4	86.5	2:00p	52.3	3:00a		4.4	0.02	4.6	21	10:45p	SSE
20	69.4	85.9	12:45p	58.7	12:00m		7.3		4.7	30	1:30a	SSE
21	67.9	85.1	1:15p	52.9	5:15a		4.0	0.03	5.0	24	3:30p	N
22	62.6	79.4	12:45p	52.5	4:30a		0.9	0.25	4.7	26	9:15p	NNW
23	57.8	66.4	12:45p	52.8	3:45a	5.4		0.11	3.3	17	8:45p	NNW
24	54.6	61.6	12:15p	51.0	9:15p	8.7		0.03	4.3	19	3:00p	NNW
25	56.9	68.9	2:00p	51.3	4:15a	4.9			5.6	21	11:15p	S
26	60.1	74.7	1:00p	50.5	3:15a	2.4			11.2	30	6:00a	SSE
27	60.7	78.1	11:45a	50.8	11:45p	0.6		0.12	9.3	28	1:45p	SSE
28	57.0	70.8	11:45a	46.0	4:45a	6.6		0.20	4.0	25	12:30p	N
29	59.8	74.2	3:45p	48.5	5:45p	3.7		0.33	10.4	30	5:45p	SSE
30	63.2	80.3	12:45p	50.1	4:45a		0.2	0.21	7.8	31	1:30p	SSE
31	72.2	89.5	3:00p	51.7	12:45a		5.6		9.1	26	10:30p	S
--	65.7 ¹	91.6 ³	7 th	45.7 ³	5 th	34.1 ²	102.4 ²	3.85 ²	7.1 ¹	39 ³	10 th	SSE

Footnotes: 1. Average; 2. Sum (total); 3. Max or Min
 Heat Base: 65.0 Cool Base: 65.0
 Method: (High + Low) / 2 (per ¼ hour)

August

Day	Mean Temp.	High Temp.	High Temp. Time	Low Temp.	Low Temp. Time	Heat Degree Days	Cool Degree Days	Precip.	Average Wind Speed	Peak Wind Speed	Peak Wind Time	Wind Dominant Direction
1	73.6	85.1	11:15a	63.7	4:30a		9.4		12.9	28	12:45p	SSE
2	71.6	86.1	3:00p	62.6	5:15a		9.3		12.9	28	6:00a	SSE
3	71.3	84.9	1:45p	58.1	6:15a		6.5	0.03	3.8	18	12:15a	SE
4	61.9	80.3	9:45a	52.5	5:15a		1.4	0.34	8.7	43	5:15p	SSE
5	61.0	71.3	12:30p	55.7	2:45a	1.5		0.27	13.2	32	12:30p	SSE
6	65.8	84.5	2:15p	52.0	5:00a		3.3	0.10	6.1	21	12:45a	SSE
7	65.0	81.6	12:45p	53.5	11:45p		2.6	0.18	6.0	21	2:30p	SSE
8	64.1	79.2	5:15a	50.8	5:45a			0.02	6.3	26	7:45p	NNW
9	64.7	78.1	1:00p	49.8	5:45a	1.1			7.9	36	4:45p	SE
10	65.5	83.0	2:30p	53.5	12:00m		3.3		10.1	37	7:30a	SE
11	57.1	71.8	2:30p	48.6	2:15a	4.8		1.02	5.5	32	4:15p	SSE
12	59.5	73.7	3:30p	50.8	6:15a	2.8		0.11	6.4	29	5:45p	SSE
13	62.0	78.1	2:15p	51.4	4:30a	0.3			10.8	30	12:00m	S
14	60.3	74.2	4:00p	51.1	11:00p	2.4			12.4	29	7:00p	SSE
15	63.4	75.4	4:30p	51.7	5:15a	1.4			11.5	28	2:00p	SSE
16	65.2	79.6	1:15p	51.9	6:15a		0.8		7.3	26	12:30a	SSE
17	66.1	78.5	1:45p	52.2	5:15a		0.3		9.2	29	9:00p	SSE
18	60.2	80.1	11:30a	49.6	5:45a	0.2		0.29	5.4	24	12:15a	SSE
19	52.8	62.3	1:15p	49.6	6:15a	9.1		0.16	4.5	25	6:00p	NNW
20	57.8	73.5	2:45p	47.7	5:30a	4.4		0.14	4.1	20	5:00p	S
21	58.0	72.0	12:00p	50.8	11:15p	3.6		0.28	8.9	27	9:30a	SSE
22	63.1	80.3	1:00p	49.9	12:15a		0.1		6.9	22	6:15a	SSE
23	68.2	82.0	3:45p	48.2	1:15a		0.1		6.8	20	10:45p	SE
24	64.6	75.3	1:15p	50.1	6:30a	2.3			7.9	27	5:45p	SSE
25	66.8	83.2	4:00p	47.6	6:00a		0.4		6.1	29	1:15p	SSE
26	70.8	84.5	4:45p	53.8	5:45a		4.2		8.5	37	2:30p	SSE
27	54.8	69.9	2:00p	45.2	9:15p	7.4		0.55	7.1	27	5:30p	NNW
28	56.1	66.8	2:15p	45.7	12:15a	8.8			10.5	34	4:30p	SE
29	64.9	80.1	1:45p	53.6	6:00a		1.8		9.2	34	2:45p	SE
30	64.6	79.4	1:00p	58.1	9:30p		3.8		9.8	29	12:30a	SSE
31	60.0	76.8	1:15p	47.9	11:30p	2.6		0.05	8.1	32	4:00p	SSE
--	63.3 ¹	86.1 ³	2 nd	45.2 ³	27 th	52.5 ²	47.2 ²	3.54 ²	8.2 ¹	43 ³	4 th	SSE

Footnotes: 1. Average; 2. Sum (total); 3. Max or Min
 Heat Base: 65.0 Cool Base: 65.0
 Method: (High + Low) / 2 (per ¼ hour)

September

Day	Mean Temp.	High Temp.	High Temp. Time	Low Temp.	Low Temp. Time	Heat Degree Days	Cool Degree Days	Precip.	Average Wind Speed	Peak Wind Speed	Peak Wind Time	Wind Dominant Direction
1	60.4	78.3	3:30p	43.9	2:45a	3.9		0.10	8.7	26	9:45p	SE
2	66.9	87.0	1:15p	54.5	3:45a		5.8		13.2	35	10:45p	SSE
3	68.6	84.9	12:45p	55.0	4:15a		4.9		12.5	37	1:00a	SSE
4	59.2	73.0	9:45a	52.8	12:00m	2.1		0.33	12.8	30	12:45a	SSE
5	59.3	74.9	3:45p	44.2	11:45a	5.4			4.7	21	1:00a	SSE
6	57.8	70.6	2:30p	40.2	3:00a	9.6			13.0	34	4:30p	SE
7	62.4	73.9	1:45p	53.5	6:15a	1.3			19.5	40	4:45p	SE
8	64.0	83.0	12:45p	52.2	6:15a		2.6	0.02	14.3	39	2:30a	SE
9	67.8	82.8	12:00p	54.4	5:45a		3.6		12.0	35	12:00m	SSE
10	69.1	84.9	1:15p	57.0	4:15a		5.9		8.3	34	12:30a	SSE
11	66.5	83.2	2:00p	45.2	5:45a	0.8			6.1	27	11:00p	SSE
12	71.2	83.4	3:00p	62.3	2:00a		7.8		12.6	34	12:30p	SSE
13	70.6	85.1	2:45p	56.3	6:15a		5.7		11.4	32	12:30p	SSE
14	69.0	86.5	1:45p	49.1	5:30a		2.8		5.3	21	1:30a	SSE
15	60.1	73.9	2:45p	46.0	6:30a	5.0			10.1	33	11:45p	SSE
16	66.3	84.5	3:45p	52.6	3:15a		3.6		13.3	42	5:45a	SE
17	70.6	87.0	2:30p	51.9	2:30a		4.4		8.1	27	5:00p	SSE
18	67.5	80.7	1:30p	57.0	11:00p		3.8	0.17	16.9	40	3:15p	SSE
19	60.8	69.3	1:15p	54.7	6:30a	3.0		0.03	17.0	43	12:45p	SSE
20	64.5	78.5	2:15p	53.9	11:45p		1.2		13.8	37	12:30a	SSE
21	50.7	67.6	12:30p	39.5	11:15p	11.5		0.13	6.9	26	3:15p	NNW
22	39.4	48.9	3:30p	31.2	11:30p	24.9			4.4	17	12:15a	NNW
23	51.3	65.2	2:00p	30.4	3:15a	17.2			10.9	28	11:45p	SE
24	52.9	67.6	12:30p	43.3	6:15a	9.6		0.21	7.9	29	12:15a	SSE
25	51.7	64.2	1:00p	39.8	4:30a	13.0			8.9	28	5:00p	SSE
26	52.0	60.7	12:30p	44.1	5:15a	12.6			11.6	28	1:15p	SSE
27	56.5	70.1	1:30p	42.3	5:15a	8.8		0.16	5.8	26	1:00a	N
28	51.4	62.6	1:30p	43.8	4:30a	11.8			7.1	30	2:45p	SSE
29	53.8	67.4	2:30p	45.4	6:30a	8.6			18.2	37	4:30p	SSE
30	53.9	68.4	2:30p	42.3	11:30p	9.7			9.6	33	12:30a	SE
--	60.5 ¹	87.0 ³	2 nd	30.4 ³	23 rd	158.8 ²	52.2 ²	1.15 ²	10.8 ¹	43 ³	19 th	SSE

Footnotes: 1. Average; 2. Sum (total); 3. Max or Min
 Heat Base: 65.0 Cool Base: 65.0
 Method: (High + Low) / 2 (per ¼ hour)

- WELCOME MOISTURE!! We've had 17.52" for 2004 through August. This is more than for any full YEAR since 1999.

October

Day	Mean Temp.	High Temp.	High Temp. Time	Low Temp.	Low Temp. Time	Heat Degree Days	Cool Degree Days	Precip.	Average Wind Speed	Peak Wind Speed	Peak Wind Time	Wind Dominant Direction
1	43.8	50.7	2:15p	35.0	5:15a	22.2			6.1	29	11:00p	NNW
2	53.3	67.4	3:30p	42.3	4:00a	10.2		0.06	13.3	35	2:15a	SE
3	54.4	69.9	11:45a	41.2	6:00a	9.4			5.9	26	12:15a	SSE
4	49.9	62.0	11:30a	42.3	6:15a	12.8		0.04	6.5	28	6:30p	SSE
5	45.5	48.2	8:15a	41.9	9:00p	19.9		0.23	13.0	30	1:00a	SSE
6	48.4	65.2	4:00p	37.0	6:15a	13.9			5.1	25	12:30p	SE
7	51.3	67.8	3:15p	34.9	3:15a	13.6			4.2	17	11:45a	ESE
8	50.4	65.8	3:15p	37.2	5:15a	13.5			4.0	16	6:00a	E
9	52.0	63.5	2:15p	42.1	12:15a	12.2			14.1	27	11:00p	SSE
10	51.2	64.3	2:15p	44.6	12:00m	10.5			11.7	30	12:45a	SSE
11	44.6	55.1	2:30p	37.2	11:30p	18.8		0.30	2.3	18	2:00p	WNW
12	47.5	64.5	3:15p	32.7	6:45a	16.4		0.12	3.0	17	2:15p	N
13	35.4	51.0	12:15a	28.2	12:00m	25.4		0.33	5.1	22	6:45a	N
14	45.6	63.9	3:00p	27.8	12:15a	19.2			7.8	26	4:00a	ESE
15	51.5	72.7	12:45p	36.0	9:30p	10.7			7.5	32	4:30p	SE
16	50.2	66.9	3:00p	36.9	12:15p	13.1			17.7	40	8:45a	SSE
17	56.4	70.9	1:00p	44.6	9:30p	7.3			9.2	34	4:15p	SSE
18	50.5	67.1	2:30p	36.5	12:00m	13.2			6.9	21	5:45a	
19	50.2	66.3	2:00p	29.8	5:45a	16.9			6.0	31	12:00m	SE
20	56.7	70.3	2:30p	48.2	7:00a	5.8			10.8	33	12:15p	SSE
21	57.7	73.0	12:30p	47.7	5:30a	4.7			14.2	34	2:00p	SSE
22	46.6	55.0	12:00p	30.7	11:45p	22.2			11.5	35	2:45a	SSE
23	47.7	62.4	2:00p	26.0	6:15a	20.8			13.7	36	11:00p	SSE
24	56.3	71.1	1:00p	39.9	10:45p	9.5			6.7	36	12:15a	SW
25	45.6	58.7	12:15p	29.4	4:15a	21.0			10.8	45	4:30p	SE
26	53.1	68.6	2:30p	41.1	5:45a	10.2			7.8	28	12:15a	SSE
27	56.2	67.4	2:00p	49.4	2:00a	6.6			14.6	36	12:00p	SSE
28	54.0	67.3	1:00p	44.8	6:15a	8.9			16.6	40	10:00p	SSE
29	43.8	53.2	3:15p	31.8	10:15p	22.5			6.8	32	12:15a	WNW
30	43.9	59.5	2:30p	28.5	6:30a	21.0			9.7	30	2:00p	SSE
31	44.5	57.0	1:30p	32.1	12:00m	20.5			5.6	28	12:00m	NNW
--	49.6 ¹	73.0 ³	21 st	26.0 ³	23 rd	452.7 ²	²	1.08 ²	9.0 ¹	45 ³	25 th	SSE

Footnotes: 1. Average; 2. Sum (total); 3. Max or Min
 Heat Base: 65.0 Cool Base: 65.0
 Method: (High + Low) / 2 (per ¼ hour)

- 13th: First snow of the season (about 2") fell during the morning hours.

November

Day	Mean Temp.	High Temp.	High Temp. Time	Low Temp.	Low Temp. Time	Heat Degree Days	Cool Degree Days	Precip.	Average Wind Speed	Peak Wind Speed	Peak Wind Time	Wind Dominant Direction
1	22.6	32.1	12:15a	17.2	12:00m	40.4		0.40	12.0	35	2:45p	N
2	23.0	35.9	3:00p	13.8	6:00a	40.1		0.22	4.1	16	11:00a	NNW
3	38.1	60.1	12:45p	14.3	12:30a	27.8			3.4	13	12:45a	ESE
4	40.7	53.1	1:15p	29.0	5:00a	24.0			9.5	35	6:15p	NNW
5	46.5	59.9	12:30p	34.1	4:00a	18.0			8.4	24	10:30a	SE
6	48.9	63.7	2:45p	36.0	6:30a	15.2			3.8	17	4:30a	ESE
7	51.0	66.8	12:30p	33.2	5:30a	15.0			8.4	31	12:00m	SSE
8	51.3	60.1	1:15p	44.9	12:00m	12.5			18.6	38	8:45p	SSE
9	42.0	52.0	12:15p	30.9	10:00p	23.5		0.17	14.7	42	6:45a	SSE
10	33.2	37.0	12:00p	25.7	11:00p	33.6		0.08	8.8	33	1:15p	NNW
11	33.6	46.0	11:15a	24.5	5:45a	29.8			11.6	35	7:30p	SSE
12	34.1	45.2	11:45a	26.1	3:30a	29.3		0.03	4.9	33	12:45a	SSE
13	29.2	32.7	1:15p	24.8	12:00m	36.3		0.06	5.9	22	9:15p	SSE
14	30.3	42.9	11:30a	22.5	5:30a	32.3			14.1	34	9:45p	SSE
15	39.5	46.0	1:15p	30.7	12:15a	26.7			12.9	40	7:30p	SSE
16	42.2	56.9	12:15p	33.1	12:00m	20.0			8.3	27	2:45a	SSE
17	40.5	49.5	12:15p	31.6	4:45a	24.5		0.01	4.3	22	11:45a	NNW
18	37.3	42.8	3:15p	33.2	5:30p	27.0			8.2	37	10:15p	NNW
19	41.1	53.2	12:15p	28.8	6:15a	24.0			5.4	31	12:15a	N
20	26.2	29.7	1:30p	23.8	6:45p	38.3		0.53	1.4	13	4:45p	NNW
21	31.4	37.9	1:30p	22.5	3:00a	34.8			11.8	35	10:15a	SSE
22	37.5	51.9	1:00p	26.1	6:00a	26.0		0.17	5.4	26	1:15a	SSE
23	25.2	34.0	1:00a	17.8	7:00p	39.1		0.04	4.3	26	4:45a	NNW
24	28.6	36.2	11:15a	26.1	3:30a	33.8			8.9	27	12:45p	SSE
25	41.4	56.3	1:45p	24.1	2:30a	24.8			7.0	21	10:45p	SE
26	37.4	51.4	10:15a	26.1	12:00m	26.3		0.06	5.3	26	1:15p	NNW
27	30.0	37.5	11:30a	20.3	5:30a	36.1			15.0	47	1:15p	SSE
28	37.6	48.0	11:00a	10.9	12:00m	35.5		0.24	8.5	32	3:00a	NNW
29	9.2	14.8	12:45p		9:15p	57.6		0.03	6.7	22	4:15a	NNW
30	23.5	41.1	2:45p	2.4	1:00a	43.3			8.2	26	6:00p	ESE
--	35.1 ¹	66.8 ³	7 th	2.4 ³	30 th	895.4 ²	²	2.04 ²	8.3 ¹	47 ³	27 th	SSE

Footnotes: 1. Average; 2. Sum (total); 3. Max or Min
 Heat Base: 65.0 Cool Base: 65.0
 Method: (High + Low) / 2 (per ¼ hour)

- 2nd: ~7 inches of snow fell yesterday and another 3 inches last night. Lots of wind and drifts to 2 feet or more.
- 21st: ~6 inches of very wet snow yesterday.
- 23rd: ~2 inches of snow overnight.
- 28th: ~4 inches of snow

December

Day	Mean Temp.	High Temp.	High Temp. Time	Low Temp.	Low Temp. Time	Heat Degree Days	Cool Degree Days	Precip.	Average Wind Speed	Peak Wind Speed	Peak Wind Time	Wind Dominant Direction
1	24.7	37.5	1:15p	9.3	10:45p	41.6			2.3	17	12:15a	NNW
2	24.5	38.6	12:00p	6.9	3:00a	42.3			12.0	34	4:00p	SSE
3	33.1	47.1	1:30p	20.5	5:30a	31.2			10.9	33	4:15p	SSE
4	38.0	55.6	10:00a	20.5	4:15a	27.0			4.4	22	10:00p	ESE
5	38.2	49.2	10:00a	30.4	6:15a	25.2			11.6	35	2:00a	SSE
6	33.5	43.1	1:45p	23.3	10:00p	31.8			7.6	32	12:45a	SSE
7	37.9	55.9	11:45a	20.2	2:00a	26.9			12.1	28	5:15a	SSE
8	38.2	53.3	1:15p	28.7	4:30a	24.0			4.9	21	2:30a	SSE
9	42.9	51.1	11:15a	29.4	12:00m	24.8			5.3	29	1:30p	WNW
10	41.4	58.4	1:15p	24.4	2:30a	23.6			5.1	19	11:45a	ESE
11	41.4	74.2	1:30p	33.2	1:15a	11.3			7.1	24	6:30a	SSE
12	40.9	52.0	11:00a	24.1	12:00m	27.0			4.9	17	8:45a	NNW
13	29.1	41.5	1:15p	21.8	5:00a	33.4			5.0	22	8:00p	SSE
14	34.2	44.5	10:30a	26.3	4:00a	29.6			17.5	36	7:30a	SSE
15	34.1	45.2	11:00a	23.9	5:45a	30.5		0.28	5.1	26	11:30a	N
16	27.0	34.6	1:30p	17.0	12:00m	39.2			5.0	21	4:45a	NNW
17	34.1	55.6	12:15p	15.6	3:30a	29.4			2.7	20	5:00p	ESE
18	33.1	48.5	10:30a	20.3	5:00a	30.6			6.1	21	12:00m	ESE
19	42.6	63.1	2:00p	25.1	5:15a	20.9			9.2	22	2:00a	SSE
20	41.2	58.9	10:30a	21.8	10:45p	24.7			6.3	22	1:15a	SSE
21	25.3	34.6	12:00p	18.0	12:00m	38.7		0.34	11.2	40	10:45a	SE
22	17.2	23.0	12:00p	14.8	11:30p	46.1		0.22	7.7	33	6:15p	NNW
23	5.0	14.8	12:15a	-9.6	5:45p	62.4		0.03	7.1	26	9:15p	NNW
24	20.5	37.9	12:30p	-4.1	12:30a	48.1			6.1	20	6:45p	SSE
25	38.5	50.7	11:00a	22.1	5:15a	28.6			8.6	30	8:00p	SSE
26	43.0	58.6	11:30a	35.5	9:30p	18.0			12.7	30	12:30a	SSE
27	45.5	55.4	11:00a	38.9	4:00a	17.8			7.6	26	4:30p	SSE
28	42.8	54.1	1:15p	32.7	7:00a	21.6			8.6	24	10:45p	SSE
29	45.8	56.9	10:30a	40.2	4:00a	16.4			19.1	42	5:00p	SSE
30	42.0	49.6	12:45p	37.2	6:30a	21.6			10.4	38	10:45a	WSW
31	44.2	57.8	11:30a	38.0	12:00m	17.1			14.3	33	9:45p	SSE
--	34.8 ¹	74.2 ³	11 th	-9.6 ³	23 rd	911.1 ²	²	0.87 ²	8.3 ¹	42 ³	29 th	SSE

Footnotes: 1. Average; 2. Sum (total); 3. Max or Min
 Heat Base: 65.0 Cool Base: 65.0
 Method: (High + Low) / 2 (per ¼ hour)

- 15th: ~2.5" of snow last night - first of the month.
- 23rd: ~9" of snow over the past two days....and COLD! In fact, it was the COLDEST DAY of the year (-9.6 deg.!!)